

Biopharmaceutical considerations in paediatrics with a view to the  
evaluation of orally administered drug products – a PEARRL review.

Mariana Guimarães<sup>1,¥</sup>, Marina Statelova<sup>2,¥</sup>, René Holm<sup>3</sup>, Christos Reppas<sup>2</sup>, Moira Symillides<sup>2</sup>,  
Maria Vertzoni<sup>2,\*</sup>, Nikoletta Fotaki<sup>1,\*</sup>

<sup>1</sup> Department of Pharmacy and Pharmacology, University of Bath, Bath, UK

<sup>2</sup> Department of Pharmacy, National and Kapodistrian University of Athens, Athens, Greece

<sup>3</sup> Drug Product Development, Janssen Research and Development, Johnson & Johnson, Turnhoutseweg  
30, 2340 Beerse, Belgium

¥ equal contribution

\* Correspondence to:

Dr Maria Vertzoni

Department of Pharmacy, School of Health Sciences, National and Kapodistrian University of Athens,  
Panepistimiopolis, 157 84 Zografou, Greece

Tel. +30 210 727 4035, Fax: +30 210 727 4027, E-mail: [vertzoni@pharm.uoa.gr](mailto:vertzoni@pharm.uoa.gr)

Dr Nikoletta Fotaki

Department of Pharmacy and Pharmacology, University of Bath, Claverton Down  
Bath, BA2 7AY, United Kingdom

Tel. +44 1225 386728, Fax: +44 1225 386114, E-mail: [n.fotaki@bath.ac.uk](mailto:n.fotaki@bath.ac.uk)

Key words: oral absorption, paediatric, biopharmaceutics, physiology, food-effect

24 Abstract

25

## 26 **Objective**

27 In this review, the current biopharmaceutical approaches for evaluation of oral formulation  
28 performance in paediatrics are discussed.

## 29 **Key findings**

30 The paediatric gastrointestinal (GI) tract undergoes numerous morphological and physiological  
31 changes throughout its development and growth. Some physiological parameters are yet to be  
32 investigated, limiting the use of the existing *in vitro* biopharmaceutical tools to predict the *in vivo*  
33 performance of paediatric formulations. Meals and frequencies of their administration evolve during  
34 childhood and affect oral drug absorption. Furthermore, the establishment of a paediatric  
35 Biopharmaceutics Classification System (pBCS), based on the adult Biopharmaceutics Classification  
36 System (BCS), requires criteria adjustments. The usefulness of computational simulation and modeling  
37 for extrapolation of adult data to paediatrics has been confirmed as a tool for predicting drug  
38 formulation performance. Despite the great number of successful physiologically based  
39 pharmacokinetic models to simulate drug disposition, the simulation of drug absorption from the GI  
40 tract is a complicating issue in paediatric populations.

## 41 **Summary**

42 The biopharmaceutics tools for investigation of oral drug absorption in paediatrics need further  
43 development, refinement and validation. A combination of *in vitro* and *in silico* methods could  
44 compensate for the uncertainties accompanying each method on its own.

45

46 **Table of Contents**

47	1.	Introduction .....	1
48	2.	Paediatric nutrition .....	3
49	2.1.	Age-dependent feeding: recommendations and practice.....	3
50	2.2.	Paediatric energy needs and feeding frequency .....	4
51	2.3.	Water and fluid intake.....	5
52	2.4.	Food composition.....	7
53	2.5.	Physicochemical properties of meals and beverages .....	8
54	3.	Physiological and anatomical changes in paediatrics .....	9
55	3.1.	Gastrointestinal volumes.....	9
56	3.2.	Gastrointestinal fluid composition .....	11
57	3.3.	Gastric emptying .....	16
58	3.4.	Small intestinal transit times .....	17
59	3.5.	Intestinal surface area.....	18
60	3.6.	Intestinal permeability.....	19
61	3.7.	Metabolism.....	21
62	4.	Paediatric Biopharmaceutics Classification Systems (pBCS).....	23
63	4.1.	pBCS solubility classification criteria.....	24
64	4.2.	pBCS permeability classification criteria.....	26
65	4.3.	Challenges for the pBCS criteria determination .....	27
66	5.	Food effects on oral drug absorption in paediatrics.....	28
67	5.1.	Regulations and current practice: administration after a meal .....	29
68	5.2.	Regulations and current practice: co-administration of formulation with food/ drinks .....	31
69	5.3.	Food effects and paediatric dosage forms .....	32
70	6.	<i>In vitro</i> evaluation of drug products for paediatrics .....	34
71	6.1.	Paediatric biorelevant media .....	34
72	6.2.	Evaluation of drug products characteristics .....	36
73	7.	<i>In silico</i> evaluation of drug products for paediatrics .....	41
74	7.1.	Allometric scaling .....	42
75	7.2.	PBPK modeling.....	42
76	7.2.1.	Paediatric PBPK models: current status.....	43
77	7.2.2.	Building a PBPK model .....	45
78	7.2.3.	Examples of paediatric PBPK models: focus on oral drug absorption .....	49
79	7.2.4.	Challenges in the paediatric oral drug absorption model .....	56
80	8.	Conclusions .....	58

81

82

83	<b>Abbreviation list</b>
84	<b>ADME</b> Absorption Distribution Metabolism and Excretion
85	<b>AUC</b> Area under the curve
86	<b>BCS</b> Biopharmaceutics Classification System
87	<b>BW</b> Body weight
88	<b>BSA</b> Body surface area
89	<b>C<sub>max</sub></b> Maximum plasma concentration
90	<b>CYP</b> Cytochrome P450
91	<b>d</b> Days
92	<b>EMA</b> European Medicines Agency
93	<b>EFSA</b> European Food Safety Agency
94	<b>f<sub>a</sub></b> Fraction absorbed
95	<b>FDA</b> Food and Drug Administration
96	<b>GE</b> Gastric emptying
97	<b>GI</b> Gastrointestinal
98	<b>GST</b> Glutathione S-transferase
99	<b>ICH</b> International Conference on Harmonisation
100	<b>K<sub>e</sub></b> Rate constant of elimination
101	<b>MMC</b> Migrating motility complex
102	<b>NAT</b> N-acetyltransferases
103	<b>mo</b> Months
104	<b>pBCS</b> Paediatric Biopharmaceutics Classification System
105	<b>PEARRL</b> Pharmaceutical Education And Research with Regulatory Links
106	<b>PBPK</b> Physiologically based pharmacokinetics
107	<b>t<sub>1/2</sub></b> Half-life time

108	<b>TIM</b> TNO Gastro-Intestinal Model
109	<b>t<sub>max</sub></b> Time at which C <sub>max</sub> is reached
110	<b>PSA</b> Parameter sensitivity analysis
111	<b>SI</b> Small intestine
112	<b>SITT</b> Small intestinal transit times
113	<b>SULT</b> Sulfotransferase
114	<b>UGT</b> Uridine 5'-diphosphate-glucuronosyltransferase
115	<b>yr</b> Years
116	<b>wk</b> Weeks
117	<b>WHO</b> World Health Organization

## 118    **1. Introduction**

119    In recent years, there has been an increased effort to improve safety and effectiveness of medicines  
120    that are specifically designed for paediatric patients [1-3]. Not only is it important to develop age  
121    appropriate medicines, it is also crucial to establish methodologies for evaluating the performance of  
122    a formulation as a function of age [1]. Understanding of the physiological and anatomical development  
123    of the human gastrointestinal (GI) tract is a demanding task and crucial for understanding the  
124    pharmacokinetics (PK) [1]. Absorption, Distribution, Metabolism and Excretion (ADME) can all be  
125    affected by the transformations that occur throughout childhood, hence in order to design better and  
126    more appropriate paediatric medicines, changes occurring from birth to adulthood need to be taken  
127    into consideration [4].

128

129    The International Conference on Harmonisation (ICH) has previously subdivided the paediatric  
130    population in several age groups (**Table 1**). The ICH aims to harmonise guidance for regulatory  
131    agencies and industry. Europe, United States of America and Japan are regulatory founders of this  
132    initiative. The European Medicines Agency (EMA) follows the age subdivision proposed by the ICH,  
133    and further classifies children into pre-school children and school children. US Food and Drug  
134    Administration (FDA) endorses ICH age classification as one of the possible classifications, however,  
135    small differences in paediatric age groups can be found across literature including information from  
136    regulatory partners and health organisations. FDA's new draft guideline presents a different  
137    classification according to Centre for Drug Evaluation and Research [5]. A separate classification is  
138    also presented by World Health Organization (WHO) [6]. Differences between these classifications  
139    are small and reside on the days (d) until the sub-population "newborn" is considered, *i.e.* 27 days  
140    versus one month (mo). Other differences reside in how a child can be sub-classified and how the end  
141    of adolescence is described, *i.e.* 16, 18 or 20 years (yr). All paediatric subpopulations need to be  
142    considered in the drug development process. The more traditional methods for paediatric dosing, also

known as allometric scaling, are based on algorithms that allow estimation of doses by scaling adult values, based on comparison of parameters such as body weight (BW), age, and body surface area (BSA) [7]. These approaches do not account for maturation changes, such as ontogeny of enzymes and transporters [7], in comparison to more complex mathematical models, *e.g.* physiologically based pharmacokinetic (PBPK) modeling, which in certain cases might deliver a more adequate prediction of the appropriate paediatric dose.

BW and BSA differences between paediatric age groups and adults are presented in **Table 1**. Paediatric BW was retrieved from the 50<sup>th</sup> percentile boys and girls values in the Centre for Disease Control and Prevention (CDC) growth charts for paediatrics; adult 50<sup>th</sup> percentile BW values were obtained from clinical charts that include multiple races and a wide range of ages in U.S [8]. BSA values were calculated using the Mosteller formula ( $BSA = (\frac{Weight \times Height}{3600})^{\frac{1}{2}}$ ) [9]. Body height used for the calculations was retrieved from the same source as the respective BW. Newborns and infants are the age groups that show the highest differences compared to the adult population in terms of BW and BSA. The younger subpopulations show large differences in terms of physiological and anatomical factors. The absorption process in the younger subpopulations is highly influenced by the type of food ingested and the co-administration of medicine with food. The definition of a fasted state in newborns and infants is a difficult task and should be addressed with care in the design of *in vitro* experiments. In this review, the parameters concerning paediatric oral drug absorption are explored. The current knowledge and considerations for the biopharmaceutical evaluation of orally administered drug products for paediatrics and the *in vitro* and *in silico* tools to help guide the development of appropriate paediatric medicines are discussed.

*Please place Table 1 here*

## **2. Paediatric nutrition**

Nutrition represents a major determinant in body development, and maturation in paediatrics; moreover, certain nutritional patterns (*e.g.* duration of breastfeeding) have been associated with long-term health consequences, such as cardio-vascular disease prevalence [12]. Therefore, food components should be adjusted to the specific needs of each body developmental stage and health status, *e.g.* presence of chronic or acute diseases that alter the metabolic state, malabsorption of nutrient components, or food allergies and intolerances [12; 13]. Accordingly, meal properties and portions vary amongst the paediatric age groups. Eminent nutritional changes occurring during growth and maturation of healthy paediatric populations are addressed in the following section [14].

### **2.1. Age-dependent feeding: recommendations and practice**

The most heterogeneous groups with regards to the meal type appear to be newborns and infants. International and national guidelines aim to harmonise global feeding practices, which can vary depending on food availability and cultural factors [15]. According to the WHO [16; 17], the European and the British guidelines [15; 18], newborns and infants younger than 6 months, should be exclusively breastfed or receive formula milk. A complementary meal should be added during the 6<sup>th</sup> month, followed by the introduction of “finger foods” by the 8<sup>th</sup> month. In contrast, according to the American and the French authorities weaning should begin between the 4<sup>th</sup> and 6<sup>th</sup> month, as the 4-month-old GI tract is able to assimilate soft foods [15; 19]. Food consistency increases along with the infant’s ability to “munch” and chew. By the 12<sup>th</sup> month of age, infants can usually consume minced or chopped family foods and meal transition to common “adult” food should be completed by the age of two years [16]. Milk and dairy products remain an essential meal component throughout infancy [14; 17]. In practice, introduction of complementary food begins before the 6<sup>th</sup> month [20; 21]. Diverse studies report earlier access to solid or semi-solid foods, accompanied by usual overfeeding and disregarding recommendations on food composition [22-24].

## 2.2. Paediatric energy needs and feeding frequency

Average energy requirements for healthy individuals are derived from total energy expenditure, which is defined as the product of energy spent on activities and the resting energy expenditure. Equations obtained from regression analysis of measured resting energy expenditure from various subject groups are utilised for its prediction [25; 26]. Growth processes require additional energy for synthesis and deposition of new tissues. This parameter has been shown to have the highest relative contribution to total energy requirements in the first month of life (40%) and decreases to 3% during the 12<sup>th</sup> month [25]. The European guidelines utilise the equations for resting energy expenditure for paediatrics proposed by Henry *et al.* [27]. Ultimately, different levels of physical activity are assigned to the paediatric groups: light, moderate, or heavy activity. The recommended daily caloric intake for European and American paediatric populations is shown in **Figure 1** [18; 26; 28; 29]. The non-linearity of the energy requirements as a function of age can be explained by the BW-based nature of the calculations behind them. The caloric needs of paediatric subpopulations increase with age towards adult values, and factors such as gender and physical activity, become more and more relevant over time [26]. According to the European Food and Safety Authority (EFSA) newborns, infants, and children up to four years of age are more likely to have a sedentary level of activity (**Figure 1A**), whereas older children and adolescents tend to show higher activity level (**Figure 1B**) [18]. The aforementioned energy requirements are estimated for average healthy individuals [26]; various health conditions, *e.g.* severe infections, fever, diarrhoea etc., would demand special treatment also with regard to nutritional amount and composition [30].

*Please place Figure 1 here*

The required number of meals depends on their caloric density [17]. Newborns should be breastfed at least 8 times during the day and night for 4 weeks (wk), starting at birth [31]. This frequency is also

218 reflected in current practice, whereby breastfeeding occurs 8 to 10 times daily [32]. Bergman *et al.*  
219 suggest a feeding interval of one hour, which may not be easily applicable in everyday life [33]. The  
220 recommended mother's milk or formula milk volumes and feeding intervals for infants are shown in  
221 **Figure 2** [12]. The feeding intervals for formula feeding and breastfeeding show differences until the  
222 second month of life, with shorter intervals being attributed to breastfeeding [33]. Infants receive  
223 complementary meals in addition to milk beginning in the 6<sup>th</sup> month (EU recommendations) [15; 34].  
224 This would result in a narrower feeding interval for general feeds in comparison to the shown data,  
225 which only depicts milk feedings. The number of meals decreases with advancing age; adult meal  
226 frequency is recommended for children and adolescents: a three-times daily meal, accompanied by one  
227 snack [16]. Recently, the following feeding frequencies for paediatrics were reported by Johnson and  
228 colleagues: from birth to six months individuals receive six feedings daily, from six months to one  
229 year - five feeds, and beyond one year of age four feeds [35].

230 *Please place Figure 2 here*

231

### 232 **2.3. Water and fluid intake**

233 Water (fluid) intake is required in order to maintain normal hydration status through compensating for  
234 body water losses; these occur mainly by urinal and faecal excretion and evaporation via skin and  
235 lungs [36]. Newborns and infants differ from children and adults in their water needs due to their tissue  
236 composition, *e.g.* greater total body water contents, greater BSA/BW ratio, lower sweating capacity  
237 and limited concentrating ability of the kidneys. Higher daily fluid volumes normalised per BW are  
238 attributed to younger age-groups compared to older children and adults [35]. The younger populations  
239 obtain water mostly through the consumed food [37]. During the first days after birth, a healthy  
240 newborn receives only breast milk. Measurements of urine osmolality have shown adequate hydration  
241 status in *ad libitum* breastfed newborns and infants without a necessity for additional water [38; 39].  
242 On the contrary, formula-fed newborns and infants require 400 - 600 mL of water per day in addition

243 to the water consumed from milk; these needs can be explained by the greater renal solute load of  
244 cow's milk infant formulae compared to human breast milk, 97 mOsmol/kg and 307 mOsmol/kg for  
245 breast milk and cow's milk, respectively. European recommendations on water intake are based on  
246 water needs per consumed calories and observations of water intake in populations with adequate urine  
247 osmolality values. Water intake reference values for healthy individuals from the paediatric population  
248 as reported by EFSA are presented in **Figure 3** [36]; the reported amounts include water present in  
249 foods and other fluids administered throughout the day. Higher water intake is attributed to males  
250 compared to females beginning at the age of 9 years.

251

252 *Please place Figure 3 here*

253

254 Although juices can be introduced to infants at the age of 1 year, intake should be limited [40; 41]. In  
255 France, the fluid consumption of children and adolescents amounts to 1.0 - 1.1 L/day, with water being  
256 the most common drink, followed by dairy drinks and juices [42]. Water requirement in adolescents  
257 and adult populations are mainly shaped by the physical activity level and health status [36]. Paediatric  
258 daily fluid requirements in a hospitalised setting tend to be lower than those for healthy populations;  
259 fluid reference values are usually acquired by the Holliday-Seeger method (calculation that takes basic  
260 metabolic caloric expenditure, caloric exhaustion determined by the physical activity level under  
261 hospitalised conditions, corrected by urinary and insensible water loss into account). Paediatric  
262 populations undergo dynamic physiological development; this is taken into account by dividing the  
263 fluid requirements according to three BW bands: patients under ten kilograms, up to and beyond twenty  
264 kilograms of BW [43].

265

266

## 267    **2.4. Food composition**

268    Human breast milk undoubtedly offers the optimal macro- and micronutrients composition for  
269    newborns and infants [17]. The composition of breast milk changes rapidly: the first milk, colostrum,  
270    undergoes compositional alterations from the fifth to fifteenth day postpartum (intermediate milk) to  
271    reach mature milk composition in the third week after birth [44; 45]. The major differences between  
272    colostrum and mature milk are the notably decreased protein content and increased fat fraction, as  
273    indicated in **Table 2** [44]. The high protein content measured in human breast milk (14% from the total  
274    caloric content) might not be of nutritional value, as it has been previously reported to contain high  
275    levels of non-digestible lactoferrin and IgA [44; 45]. A great variability with regard to macronutrient  
276    contents and amounts have been observed for breast milk in relation to the maternal health background  
277    and diet [46; 47]. Formula milk development is based on the properties of human breast milk.  
278    Accordingly, these two types of milk exhibit similar macronutrient composition, which is shown in  
279    **Table 2** [45; 47]. Furthermore, regulations ensure the appropriateness of the essential macro and  
280    micronutrients in marketed infant formulae in the EU [45]. The proportions of casein to whey-proteins,  
281    lipid composition, fat-globule structure and size, and milk origin, (*e.g.* soy or cow's milk) are variable  
282    among different formulae and not equal when compared to human breast milk [48; 49]. The presence  
283    of bile salts in human breast milk, but not in formula milk, should be considered as an additional  
284    potential factor that might affect oral drug absorption [48]. Unmodified cow's milk contains higher  
285    protein fraction than human breast milk, hence the earliest administration of fortified full-fat cow's  
286    milk should only occur after the first year of age [38]. It is interesting to note that proteins account for  
287    less than 10% of the calories in human breast milk and infant formula milk. Carbohydrates represent  
288    the main energy source in complementary foods, while fats contribute less to the total caloric content  
289    when compared to breast milk. The protein fraction in infants' weaning foods depends on the meal  
290    type (**Table 2**). From children to adults, the meal protein content increases, while the fat content

291 decreases. Carbohydrates reach adult recommended levels already in the meals for infants (45 - 65%)  
292 (**Table 2**).

293 *Please place Table 2 here*

294

## 295 **2.5. Physicochemical properties of meals and beverages**

296 Foods for infants differ from adult meals regarding their texture and physicochemical properties. The  
297 properties of 15 commonly used soft foods, juices, and suspensions (vehicles) have been investigated  
298 for their physicochemical characteristics (**Figure 4**) [55]. Formula milk exhibits greater viscosity than  
299 juices and cow's milk. The viscosity of meals for different paediatric populations becomes greater with  
300 increasing age, *i.e.* milk formula versus soft foods. Juices and "fruity vehicles" show acidic pH values,  
301 which in some cases can compromise drug stability [55; 56]. Milk types exhibit different buffer  
302 capacity and osmolality, which might result from addition of excipients (*e.g.* sugars, lecithin) in  
303 flavoured milk compared to cow's milk (**Figure 4B and 4C**). In agreement with the similar  
304 macronutrient composition of human breast milk and formula milk, similar pH and osmolality values  
305 were found in the literature for human breast milk, pH of 6.8 and osmolality of 290 - 299 mOsmol/kg  
306 [57], when compared to the values presented in **Figure 4**. Recently, the physicochemical properties of  
307 26 types of soft foods and beverages available on the EU and USA market were investigated [56]. A  
308 significant difference among formula milk types was reported for the surface tension of the three tested  
309 products (Formula First Milk, Formula Soya Infasoy<sup>®</sup>, and Formula Soya Wysoy<sup>®</sup>) [56]. Differences  
310 among milk types and yogurts, *e.g.* soy, plain product, and flavoured product, were observed for the  
311 measured buffer capacity, osmolality, surface tension, and viscosity. Variability among different  
312 brands of applesauce and blackcurrant squash available on different markets (*i.e.* UK, Germany, and  
313 USA) was shown in their buffer capacity, osmolality, surface tension and viscosity; some of these  
314 reported differences are probably related to the different amount of sugars added to the products [56].  
315 Currently, food-effect bioavailability and fed state bioequivalence studies for paediatric drug product  
316 are performed in adults, under conditions that comply with the recommendations provided by the US

317 FDA and EMA with a high-calorie, high-fat standard adult breakfast as a meal for the fed state  
318 investigation [52; 53]. The physicochemical properties of the FDA/EMA standard breakfast (**Table 2**)  
319 [58] deviate from the physicochemical properties of the tested vehicles for paediatric use in terms of  
320 pH values, viscosity, and osmolality (**Figure 4**). Although some trends can be observed from the  
321 available data for the reported soft foods and drinks, e.g. fruit juices, dairy products, formula milk and  
322 milk types, further investigation of the product variability between different brands with focus on their  
323 physicochemical characterisation might be of interest.

324

325 *Please place Figure 4 here*

326

### 327 **3. Physiological and anatomical changes in paediatrics**

328 Growth and maturation continuously take place from birth to adulthood. These processes, which  
329 govern paediatric development, are fastest in the youngest paediatric subpopulations (newborns and  
330 infants). As previously mentioned, BSA and BW increase significantly during the first year of life  
331 (**Table 1**). Furthermore, changes in body composition take place. A decrease of body water and an  
332 increase of lipid and protein are seen throughout development [60; 61]. Therefore, younger  
333 populations, such as newborns and younger infants, present higher extracellular water contents [60].  
334 Physiological and anatomical age-related changes in the GI tract are capable of influencing oral drug  
335 absorption processes, such as rate and extent of drug absorption [61-64]. In the following sections, the  
336 main changes in the GI tract that may influence the pharmacokinetics following oral drug  
337 administration in paediatric populations will be discussed.

338

#### 339 **3.1. Gastrointestinal volumes**

340 Gastric volumes in the fasted state are most often reported as a function of BW (**Table 3**), with similar  
341 volume values reported across the different ages. Values of gastric volumes were selected if no clear

342 fluids (e.g. water, tea, clear apple juice) had been administered for at least 2 h or more, and constraint  
343 of solid food/semi-solid food/other fluids lasted for a minimum of 4 h prior to the gastric volume  
344 measurement. Nevertheless, studies have shown that small volumes (less than 2 mL/kg) of clear fluids  
345 (such as water, tea and others) are not expected to affect measurements of gastric volume within a 2 h  
346 period [65]. Literature studies have evaluated the fasted gastric volume across the paediatric  
347 subpopulations, and no clear age distinction among the studied subpopulations (newborns, infants and  
348 children) is reported. Maekawa *et al.* also reported that ingestion of higher volumes (10 mL/kg of BW)  
349 of fluids (apple juice) ingested up to 2 h before measurements are not expected to affect gastric  
350 volume [66].

351

352 *Please place Table 3 here*

353

354 In the paediatric population, it is more likely that the medication is dosed with food. Considering that  
355 the youngest subpopulations are mainly in the postprandial state, due to the higher frequency of food  
356 intake, food will most likely already be available in the stomach [48]. Following the ingestion of food,  
357 the stomach content can increase significantly (up to 50 fold), and stomach capacity volumes can range  
358 from 10 to 100 mL in newborns, 90 to 500 mL in infants, 750 to 960 mL in children, and 1500 to  
359 2000 mL in adolescents and 3000 mL in adults [78]. For the youngest sub-populations, the gastric  
360 volume in the fed state will be mainly represented by the volume of the food ingested [35]. Gastric  
361 volume in children measured 3 h after administration of drinks (orange squash, maximum 200 mL)  
362 and of drinks and biscuits (orange squash, maximum 200 mL and two plain biscuits) was 0.39 mL/kg  
363 and 0.46 mL/kg, respectively (compared to 0.25 mL/kg measured after 7 h fasting) [70].

364 Roman *et al.* investigated the effect of gastric secretions on gastric volumes in premature newborns  
365 (n = 9, ~5 wk postnatal age), by assessing the difference between residual meal volumes, and total  
366 gastric content volumes after ingestion of human milk and infant formula [79]. Volumes of gastric  
367 contents were determined by aspiration from 0 - 180 min after meal ingestion, and residual meal

368 volumes were calculated by the difference between initial meal volume and gastric emptying (GE).  
369 Gastric secretions were a significant contributing factor of gastric contents in the fed state: 32%, 28%,  
370 and 43% v/v at 30, 60, and 90 min following feeding, respectively. A separate study showed that  
371 volumes of gastric secretions corresponded to  $2.0 \pm 1.4$  mL/kg BW in newborns ( $n = 8$ , 4 - 24 wk) in  
372 the first postprandial hour [80]. Smaller contributions of gastric secretions to total gastric volume  
373 (1 mL/kg in 30 min following meal intake) have also been reported in premature newborns ( $n = 10$ ,  
374 1 - 9 wk postnatal age) [81].

375 The gastric volume after administration of three types of food (*i.e.* human milk  $18.4 \pm 0.5$  mL/kg;  
376 SMA-SP<sup>®</sup> formula  $17.4 \pm 0.5$  mL/kg; and Similac SC<sup>®</sup> formula  $17.0 \pm 0.7$  mL/kg) to newborns and  
377 infants (1 - 11 wk) was measured at 10, 30, and 50 min after food intake [82]. Ten minutes after feeding  
378 the volume ranged from 10 to 13.5 mL/kg and after 50 minutes there was still a volume of 4 to 6 mL/kg  
379 present in the stomach [82]. Based on these studies, a mean feeding volume of newborns and young  
380 infants of  $23.5 \pm 4.2$  mL/kg has been suggested [48]. No information was found on intestinal volumes  
381 across paediatric subpopulations.

382

### 383 **3.2. Gastrointestinal fluid composition**

384 In paediatrics, fasted gastric pH is widely described as being neutral moments after birth, ranging from  
385 values of 6 to 8, mainly due to amniotic fluid ingestion [83; 84]. Contradictory information has been  
386 reported with regards to the time after birth which is needed to reach acidic pH values. Nevertheless,  
387 reviews of original reports show that fasted gastric acidic pH values of 1.5 to 3 are reached hours after  
388 birth, up to the first two weeks of life [48; 63; 85; 86]. A summary of the pH values of GI contents of  
389 paediatric population and of adults is presented in **Figure 5**.

390

391 *Please place Figure 5 here*

392

393 Newborns and young infants are mainly fed with milk, whether it is breast milk or different types of  
394 formulae, which can have an impact on several characteristics, including fed gastric pH. Studies have  
395 reported that pH values over 4 were detected more frequently in newborns and infants than in older  
396 children [79; 106; 107], mainly due to feeding patterns in this subpopulation and the high buffer  
397 capacity of breast milk and formulae [106; 108]. Comparison of two separate studies (adults vs.  
398 newborns) of continuously monitoring of the fed gastric pH showed that 2 h after a meal, higher fed  
399 gastric pH values (0.7 - 1.8 units) were found in newborns (2 - 15 d) [109]. The meal ingested by adults  
400 consisted of a standard solid meal (1000 Kcal), opposed to newborns where formula milk was ingested  
401 (14.5 - 29.0 mL/kg per feeding) [98; 99]. It should be noted that the interpretation of pH in the fed state  
402 is difficult, as differences might simply arise as a function of meal composition, or the time interval  
403 after intake of the meal and the measurement.

404

405 Available data on fasted and fed intestinal pH indicates high variability of measured values, for both  
406 adults and paediatric age groups, and that similar intestinal pH values are seen in the two groups  
407 (**Figure 5**). Children and adolescents (n = 12, 8 - 14 yr) present similar fasted intestinal pH, ranging  
408 from 6.4 - 7.4 [94], and similar mean fed intestinal pH values of 6.3 (n = 16, 7 - 16 yr) [105]. Fasted  
409 intestinal pH in newborns (n = 10, 1 - 25 d) has been studied by Fallinborg *et al.*, and mean pH values  
410 were 6.5 [94]. Newborns and infants (2 wk - 3 mo, breastfed and formula-fed) also seem to present  
411 similar fed intestinal pH profiles compared to adults, with values ranging from 6 to 7 in the  
412 duodenum [110]. Nevertheless, studies concerning intestinal pH in both fasted and fed states are  
413 scarce, especially for newborns and infants, and limit conclusions. Furthermore, the variety of  
414 techniques used to measure the pH (*i.e.* pH electrode measurements of enteric aspirates, in situ pH  
415 electrode measurements, or radio transmitting pH-sensitive capsule), could attribute to the observed  
416 variability of the measurements.

417

418 The concentration and composition of bile salts vary with age. Total duodenal bile salts concentrations  
419 [48; 109] are usually reported as a small pool of bile salts in newborns and infants when compared to  
420 adults, and lack in secondary bile salts [48; 111]. In the younger populations (newborns and young  
421 infants), tauro-conjugation of bile acids is predominantly detected, with glycol-conjugation and  
422 glycine conjugates reaching adult levels by 7 to 12 months of age [112]

423 High variability with respect to fasted bile salt levels in the small intestine (SI) of newborns and young  
424 infants has been identified [48; 109]. Fasted bile salt levels in duodenal aspirates have been shown to  
425 increase continuously during the first 60 days of life in breastfed infants, from 2 mM to 8 mM ( $n = 41$ ,  
426 mean  $4.4 \pm 2.0$  mM) [48]. The effect of breastfeeding compared to formula supplemented with  
427 different amounts of taurine and cholesterol has been investigated [113]. Total bile salt concentrations  
428 were evaluated in the fasted state, in duodenal aspirates of 65 pre-term newborns  
429 (31 - 36 gestational age), while higher bile salt concentrations were found in breastfed newborns. In  
430 breastfed newborns, the concentrations increased from ~5 mM (1 wk postnatal) to ~8 mM (5 wk  
431 postnatal) [113]. Signer *et al.* found that premature newborns ( $n = 9$ , 14 d) fed with cow's milk  
432 formula, exhibited higher total bile acid concentration in duodenal samples, when compared to  
433 breastfed newborns ( $n = 9$ , 14 d), in both the fasted (8.8 mM vs 3.8 mM) and fed state 60 min following  
434 feeding (4.4 mM vs 1.9 mM). Nevertheless, this was attributed to the difference in gestational age  
435 between the two groups (breastfed: 35 wk vs. cow's milk formula: 37 wk) [114]. Investigation of the  
436 effect of administration of a test meal [carbohydrate (4%), protein (4%), and fat (4%)] was performed  
437 by Harries *et al.*, duodenal aspirates were collected 2 h after administration of a meal to 13 infants and  
438 children (1.3 - 16.3 yr, mean 3.3 yr), and revealed fed total bile salt concentration values of 7.4 mM  
439 (range of 3.0 - 16.0 mM) [115]. Comparison of total bile salts concentration between pre-term  
440 newborns (2 wk postnatal age) and infants/children (3 mo - 6 yr), revealed lower concentrations of bile  
441 salts in the younger groups. Newborns were divided into two groups, where different types of milk  
442 were administered (evaporated milk vs modified milk), and older children received a test liquid feed

443 (containing corn oil, glucose, polyethylene glycol-4000 and water). Fed total bile salt concentration  
444 was measured in duodenal aspirates and values were ~1 mM (evaporated milk) and ~0.5 mM (modified  
445 milk), and ~5.9 mM in the older group [116]. A linear trend was recently established between the  
446 logarithm of age and bile salt concentration data collected from available studies of fed state duodenal  
447 bile salts concentration of newborns and infants ( $R^2 = 0.54$ , 7 paediatric studies and 5 adult studies)  
448 [109]. Based on this, mean fed intestinal bile acid concentration was found to be approximately  
449 2.5 mM for newborns and 7.5 mM for infants.

450

451 The role and importance of digestive enzymes in newborns and infants has been described in a recent  
452 review [48]. A summary highlighting the differences of relevant digestive enzymes between adults and  
453 paediatrics will be discussed in this review. The following enzymes have been proven to be essential  
454 for the digestion and lipolysis in newborns and infants: human gastric lipase, pancreatic triglyceride  
455 lipase (and colipase), carboxylester hydrolase, pancreatic lipase-related protein 2, and bile salt-  
456 stimulated lipase [48]. Human gastric lipase is a pre-duodenal lipase which is responsible for  
457 intragastric lipolysis in newborns, its expression is fully matured at birth and its activity in the stomach  
458 is similar to adults [48]. Pancreatic triglyceride lipase plays a major role in the lipid lipolysis process  
459 in adults. Its activity in the fed state has been shown to be lower in newborns, possibly due to dilution  
460 of enzyme levels in response to high frequent feedings in the younger subpopulations, contrary to what  
461 happens in adults, where enzyme secretion is stimulated by the presence of macronutrients [48]. The  
462 expression of carboxylester hydrolase and pancreatic lipase-related protein 2 is not fully developed at  
463 birth [48].

464

465 Pepsin is a protease secreted by the stomach and its expression is not fully matured at birth [48]. Lower  
466 pepsin secretions have been reported in younger cohorts, such as newborns and infants less than one  
467 year of age, compared to older children and adults [92]. Fasted gastric pepsin concentrations in younger

newborns (birth and 8 d of postnatal age) appear to be approximately 15% of adult values, while older newborns (10 - 32 d) and infants (67 - 110 d) express similar mean concentrations of approximately 41% of the adult values [109]. Similarly to pepsin, trypsin expression is not matured at birth, and lower concentrations have been reported in newborns and infants when compared to children and adults [48]. In summary, pancreatic enzyme concentrations are lower at birth and appear to reach mature levels by one year of age [63].

Limited information is available on osmolality and buffer capacity of paediatric GI fluids. A positive linear correlation has been reported between the osmolality of the diet as a function of the osmolality observed in the stomach and duodenum in 15 low-birth-weight newborns monitored for three hours after food ingestion [117]. Maharaj *et al.* built a linear regression model for a 60 min postprandial period ( $R^2 = 0.95$ ,  $n = 8$  separate feeds) to predict neonatal fed gastric osmolality based on results obtained from Billeud *et al.* [109; 117]. The predictions were compared with a separate study in which osmolality was measured after three separate breast milk feeds fortified with minerals/supplements [118]. As an example, after a feed with an osmolality of 344 mOsmol/kg, the corresponding measured fed gastric osmolality at 60 min was of 354 mOsmol/kg, and the predicted osmolality was 327 mOsmol/kg, with 7.6% under-prediction error. The developed model predicted fed gastric osmolality within one hour after feeding, whereby the time period was selected to reflect the high frequency of feeding in paediatric populations. The same approach was used to predict fed state duodenal osmolality ( $R^2 = 0.92$ ,  $n = 8$  separate feeds). Due to scarcity of data in paediatrics, predictions were validated against two adult studies reported by Kalantzi *et al.* and Clarysse *et al.* Measured duodenal osmolality values were 405 and 392 mOsmol/kg, 60 min following administration of liquid meals characterised by an osmolality of 610 and 670 mOsmol/kg, and predicted osmolality were adequate with values of 430 (6% over-prediction) and 454 (16% over-prediction) mOsmol/kg respectively [97; 119]. In newborns and young infants, buffer capacity of the fed gastric fluids is likely to be similar to the buffer

capacity of the administered food, as the volume of fasting gastric contents is small, and therefore unlikely to have an impact on the buffer capacity of the fed gastric fluids [109]; especially in the younger cohorts, where the frequency of meals is higher when compared to older children and adults.

### 3.3. Gastric emptying

Newborns and young infants have slower GE rates when compared to older children and adults [64; 84; 120]. In the fasted state, migrating motility complex (MMC) is responsible for the regulation of the GE rate [121]. Non-nutrient liquids do not normally interfere with the MMC [122]. The gastric emptying half-life ( $GE_{t_{1/2}}$ ), is reported to be 6.9 min for a liquid non-caloric meal (5 mL/Kg) in newborns (1 – 8 d), measured by epigastric impedance using four electrodes [123]. The use of other techniques for the measurement of GE of liquids have shown higher values, Euler and Byrne measured emptying rate of distilled water by the dilution marker technique and reported the mean  $GE_{t_{1/2}}$  to be 15 minutes after administration of 20 mL/kg of water to infants (2 - 24 mo) [124]. Administration of 20 mL/kg of tap water to children (mean age  $8.25 \pm 2.24$  yr) led to a mean  $GE_{t_{1/2}}$  of 27.1 min when measured by the ultrasound technique [124].

In the fed state, the dependency of GE on meal type and composition, meal volume and osmotic pressure has been described [84; 85; 125; 126]. In a recent meta-analysis of mean gastric residence time studies showed that GE was not affected by age and confirmed the importance of food in influencing GE rates [121]. Aqueous solutions (without calories) empty faster than liquids containing fat or protein, such as milk. Milk, the main food type for newborns and infants, empties faster than common solid foods that are ingested by older children and adults. It should be noted, that newborns and infants are the paediatric populations most likely to show differences in the fed state when compared to adults, due to the differences in meal types, but also because of the high frequency of feedings in the youngest subpopulations. Differences in composition of breast milk and formula result in faster GE of breast milk [121].  $GE_{t_{1/2}}$  was affected by administration of equal volumes of breast

518 milk compared to infant formula in newborns and infants (4 wk - 6 mo) [127], where  $GE_{t1/2}$  was  $48 \pm$   
519  $15$  min, and  $78 \pm 14$  min, respectively, indicating that infant formula empties at slower rates than breast  
520 milk. The faster emptying of breast-milk was also reported by Ewer *et al.* who compared  $GE_{t1/2}$  of  
521 breast-milk (36 min) and formula milk (72 min) in pre-term newborns ( $n = 14$ , postnatal age 4 - 26 d)  
522 [128]. Staelens *et al.* compared GE in infants ( $n = 17$ , 2 d - 3 mo) fed with intact protein formula (Nan  
523 1, Nestle®), a partially hydrolysed formula (Nan H.A.1, Nestle®), and an extensively hydrolysed  
524 formula (experimental formula);  $GE_{t1/2}$  was 55, 53 and 46 min, respectively [49], confirming that faster  
525 fed GE was observed following ingestion of protein hydrolysate formula, when compared with a  
526 formula containing native cow's milk protein, and also that the extent of dairy protein hydrolysis may  
527 affect GE. Casein-predominant feeds (typical for cow's milk products) have also been showed to  
528 empty slower than feeds with a greater whey fraction, but the authors highlighted that different  
529 methodology, food compositions and patient groups, limit the validity of the conclusions [129]. A  
530 summary of  $GE_{t1/2}$  studies is presented in **Figure 6**. The use of various techniques for the  $GE_{t1/2}$   
531 measurement may be associated with the observed variation. Increments of GE variability as a function  
532 of age in **Figure 6**, can be attributed to a broader spectrum of food types ingested by the older  
533 populations (*i.e.* caloric density).

534

535 *Please place Figure 6 here*

536

### 537 **3.4. Small intestinal transit times**

538 Analysis of available literature concerning small intestinal transit times (SITT) as a function of age,  
539 indicates that there are no significant differences in SITT across ages and that the measurement  
540 technique can have an impact on the estimated SITT value [134]. A limiting factor from the study  
541 resides in the low number of paediatric patients included in the analysis; namely only one newborn  
542 (0 - 30 d); one infant (1 mo - 2 yr); three young children (2 - 5 yr); 10 children (6 - 12 yr); and one

adolescent (12 - 18 yr) were present from a total of 52 subjects (16 paediatric subjects compared to 36 adults). Therefore, conclusions might change if data from a greater number of newborns and infants was available to be included in the analysis [134].

The International Commission on Radiological Protection (ICRP) publication 89 also reports SITT to be independent of age and type of meal ingested with a mean value of  $3.9 \pm 1.5$  hours and recommends the adoption of a reference value of 4 h for males and females of all ages. These results were obtained from a meta-analysis of data derived where several techniques were used [135]. In conclusion, although differences between measuring techniques have been previously reported [84; 134], SITT is generally considered independent of age [48; 85].

552

### 3.5. Intestinal surface area

The intestinal surface area is related to both radius and length of the intestinal segment [84]. The length of the intestine changes with growth, ranging from approximately 275 cm at birth, 380 cm at 1 year, 450 cm at 5 years, 500 cm at 10 years, and 575 cm at 20 years [136]. The radius of the SI also naturally increases with age, and ranges from approximated values of 1.2 - 2.6 cm in newborns, compared to values of 3 to 6 cm in adults [135]. Since both intestinal length and radius increase with paediatric development, the functional surface area can increase significantly [137]. Furthermore, specific morphological features on the luminal surface, such as folds, villi and microvilli, naturally increase the surface area available for absorption [138]. SI villous patterns start developing at an early stage of gestation. The growth of these features occurs by crypt hyperplasia and crypt fission (a process where the crypts unzip and duplicate). Cummins *et al.* studied these mechanisms and showed that crypt fission occurred predominantly during infancy, and crypt hyperplasia occurred during both infancy and childhood [139; 140]. Mean crypt fission rates in newborns, infants, children and adults were 7.8%, 15%, 4.9%, and 1.7%, respectively. The peak of crypt fission was found to be 18% in 5 infants from 6 to 12 months of age. Villus height, measured in biopsies of younger children, exhibits lower values compared to healthy adults, while the crypt depth has been shown to be greater in young

569 children [63; 141]. Newborns show elongated small finger-shaped villi and small crypts, with leaf-  
570 shaped villi appearing from one month after birth [140]. Feeding has been described as a modulating  
571 factor of differences in villi structure between newborns and infants, where smaller crypts have been  
572 described for those fed with breast milk, when compared to those fed with formula milk [140], whereas  
573 other literature has described villi as single projections in children younger than three years, with  
574 development of leaf or finger-shaped villi above this age [84]. Reports concerning the development of  
575 these features in early childhood are conflicting and provide a rather qualitative type of  
576 information [84]. Overall, comparison of newborns and infants with older children and adults, shows  
577 presence of lower intestinal surface area, with differences in both structure and quantity of the villi  
578 [84].

579

### 580 **3.6. Intestinal permeability**

581 Intestinal permeability is high at birth for preterm infants, with a decrease to adult values over the first  
582 week of postnatal life [142-144]. Nevertheless, both decreases and increases in permeability during  
583 the first month after birth have been reported, which might be attributed to several factors, such as  
584 differences in gestational age, clinical condition, feeding regimen, and postnatal age at the time of  
585 assessment [145]. It is unclear at which age full maturation of permeability processes is reached [142].  
586 Children over 2 years of age present similar permeability values to adults [83; 146; 147]. Additionally,  
587 processes involved in passive and active transport are fully developed in infants by ~ 4 months old  
588 [137; 142]. Growth factors, hormones, breast milk and changes in the thickness and viscosity of the  
589 intestinal mucus, have been described as factors underpinning the development of permeability  
590 processes [145].

591 Intestinal permeability and influence of the type of feeding, have been evaluated with dual sugar test,  
592 lactulose and mannitol, and creatinine. No differences in intestinal permeability were found between  
593 infants fed with breast milk, and standard cow's milk formula, nor when different types of formulae

were compared [148]. Lower permeability is often linked to ingestion of human milk, due to the presence of bioactives [145]. Stratiki *et al.* showed that infant cow's milk formula supplemented with bifidobacteria tended to decrease intestinal permeability [149; 150].

Recently, intestinal influx oligopeptide transporter peptide transporter 1 (PEPT1) was studied to understand how the disposition of substrates of this transporter changes with age. The expression and tissue localisation across the paediatric age range were investigated by analysing intestinal samples (n = 20 newborns/infants, n = 2 children, n = 4 adolescents). Lower mRNA expression levels of PEPT1 was observed in newborns/infants opposed to older children, nevertheless, the difference was small and the distribution in intestinal tissue of the transporter was similar. Therefore, similar absorption profiles with respect to PEPT1 transporter substrates are expected in the paediatric subpopulations and adults [151].

Contradictory literature can be found on the ontogeny of the efflux transporter P-glycoprotein (Pgp), also referred to as multidrug resistance protein-1 (MDR1) [137; 142]. Mooij *et al.* studied the gene expression of several hepatic and intestinal drug transporters. Intestinal mRNA expression of MDR1, MRP2, and OATP2B1 was determined in surgical small bowel samples (newborns, n = 15; infants, n = 3; adults, n = 14), and expression values for MDR1 and MRP2 were similar to the values in adults. Intestinal OATP2B1 expression in newborns was significantly higher than in adults [152]. The methodology should be considered and results should be carefully interpreted with regard to mRNA data, which may not be entirely representative of transporters' protein expression or activity [153].

Quantitative data on paediatric intestinal permeability is limited [48; 142; 146]. The need for further research in the field of drug transporters in the paediatric populations has been highlighted [154]. Some of the factors that may interfere with studies on drug transporter activity are disease, drug-gene interactions, drug-drug interactions, food-drug interactions, and exposures to environmental chemicals [154]. Access to high-quality tissue samples in the paediatric population is limited. Current tissue sources include left-over tissue from surgery and biopsies and post-mortem tissue from organ

transplants and autopsies. Issues arising from the current samples used are the periods between sample collection and death of the subjects as well as the available sample size. Additionally, acquiring parent's consent for autopsy is challenging. Development of methodologies, which will enable quantitative measurement of transporter proteins using small biologic samples, would contribute to gain insight into ontogeny trajectories of various transporters [155]. Furthermore, the development of a paediatric biobank of healthy tissues would improve research on the ontogeny of transporters and metabolic enzymes [156].

626

### 627 **3.7. Metabolism**

The intestine and liver are the two main sites for metabolism of drugs. The activity of drug metabolising enzymes is low at birth and reaches adult levels by early childhood [142]. In older children, due to a larger liver size and higher hepatic blood flow, when normalized per BW, increased hepatic clearance is observed, even if enzyme activity is described as similar to adults [142].

Drug metabolism in the gut lumen is characterised by the presence of intestinal microbiota, with changes in bacterial colonisation affecting drug absorption [63; 157]. Microbiota is present right after birth [142]. A wide variety of factors influence the patterns and extent of microbiota colonisation of the gut, including gestational and postnatal age, mode of birth, type of food, *etc.* [63; 158]. The intestinal microflora of the infants' intestine start to resemble adults' one at the end of the first year of age [145], but full maturation is only reached between 2 and 4 years of age.

Ontogeny of intestinal wall metabolism requires further investigation [142], with infants and children being the age groups with less information available [63; 142]. Reports of enzyme ontogeny describe changes in mRNA, protein, and activity levels [106]. In adults, cytochrome P-450 enzymes (CYPs) are mainly represented by the CYP3A4 and CYP3A5 [142]. In paediatrics, more information is needed about CYP intestinal enzymes to draw a conclusion. The mRNA expression of CYP3A4 and CYP3A5 decreases with age, although protein expression increases significantly with age [106]. Ontogeny of

644 these enzymes remains to be elucidated [63]. Age-dependent changes of other metabolic enzymes  
645 responsible for gut wall metabolism have been reported [142]; for example, the intestinal activity of  
646 Glutathione S-transferase alpha 1 (GSTA1-1) is significantly greater in paediatric patients younger  
647 than 5 years (as estimated by intestinal biopsies) compared to adults and older children.  
648 Sulfotransferase (SULT) mean activity values were three times higher in foetal intestinal tissues  
649 compared to adults [142]. However, not all metabolic enzymes are reported to change as function of  
650 change, for example intestinal alcohol dehydrogenases maintain the same expression levels throughout  
651 infancy and adulthood [142].

652 The ontogeny of hepatic metabolic enzymes has been studied more broadly than intestinal metabolism.  
653 Regarding CYPs, low levels are seen in younger paediatric subpopulations. Adult values start to be  
654 reported from 1 - 5 years depending on the isoform [142]. A recent examination of CYPs' hepatic  
655 expression, activity and abundance as a function of age have reported greater enzyme activity and  
656 abundance for enzymes of the CYP1A1-3 families after birth, except for the isoform CYP3A7 [159].  
657 When compared to postnatal samples, a different trend is seen, in which activity is higher than  
658 abundance [159]. The evaluated samples represented the subpopulations of newborns and infants  
659 (< 1 yr, n = 6), a juvenile group (1 - 18 yr, n = 10), and the adult population (>18 yr, n = 9); the lack  
660 of differentiation among the juvenile group, hinders the formation of a firm conclusion on age-  
661 dependent metabolic activity in this group [159]. In general, infants and juvenile groups, displayed  
662 high enzymatic abundance accompanied by a lower activity, when compared to adults [159].  
663 Moreover, other hepatic metabolic enzymes have shown age-dependency, such as  
664 Uridine 5'-diphosphate-glucuronosyltransferase; SULT; N-acetyltransferases.

665 More research in the field of the ontogeny of metabolic enzymes is still required. More paediatric  
666 subpopulations should be addressed, such as infants and children. Intestinal gut metabolism should be  
667 further studied in order to give clarity on how gut wall enzymes change with age. Changes in enzyme  
668 expression and activity can result in profound differences in production of metabolites that are not

obligatory encountered in adults [142]. As for permeability, measurement techniques should be considered when interpreting the results, as mRNA information might not be able to predict changes in levels of activity and protein expression. Literature reports should, therefore, be interpreted carefully, and methods such as protein quantification, such as targeted liquid chromatography-tandem mass spectrometry, and functional assays with *ex vivo* material should be preferred [63; 153].

#### 4. Paediatric Biopharmaceutics Classification Systems (pBCS)

The introduction of the Biopharmaceutics Classification System (BCS) by Amidon *et al.* in which drugs are divided into four categories based on their solubility and permeability, set the foundation for evaluation of oral drug absorption in the fasted state [160]. Since its establishment, the BCS' role has evolved into a useful regulatory framework, which allows extrapolation of drug product bioequivalence, in specific cases, based on *in vitro* dissolution experiments, and the correlation to *in vivo* drug product performance, also known as BCS-based biowaiver [142; 161]. Additionally, the key role of BCS in early drug development is undeniable as part of the decision making on salts and polymorph form selection and timing of dedicated studies, support of formulation decisions in pre-clinical animal models, and drug formulations intended for humans [162].

A recent survey, conducted among experts in the field of paediatric biopharmaceutics, confirmed the need of a Paediatric Biopharmaceutics Classification System (pBCS), outlined current trends, possible criteria for its establishment, and prioritised the areas of insufficient knowledge that need to be further explored [147]. Division of the paediatric population into 4 - 7 subpopulations has been proposed, with the question of the appropriateness of a further breakdown of the covered age ranges [156; 163]. The challenges towards the pBCS criteria establishment and the possible approaches for setting the classification criteria will be discussed in the following subsections.

#### 694 4.1. pBCS solubility classification criteria

695 The three key factors that define the solubility classification of a drug (the highest dose strength, the  
696 initial gastric volume which is available upon drug arrival, and the solubility of the drug) vary amongst  
697 all paediatric subpopulations. Paediatric dose determination can be based on various calculations  
698 (*i.e.* allometric or isometric scaling) or on clinical observations [164; 165] and can, therefore, result in  
699 different recommendations for each specific paediatric subset.

700

701 The paediatric initial gastric volumes have been calculated by a BW-extrapolation method based on  
702 the initial gastric volume found in adults (250 mL, corresponding to a glass of water administered in  
703 adult bioequivalence studies) and a paediatric fasted gastric fluid volume of 0.56 mL/kg [65; 146; 147;  
704 163]. Slight variation of the initial gastric volume for paediatric subpopulations is observed depending  
705 on the average weight reference values selected for the same paediatric age group (**Figure 7**) [146;  
706 163]. The calculation of paediatric initial gastric volumes by BSA-extrapolation function based on the  
707 adult initial gastric volume (*i.e.* 250 mL) and adult BSA of 1.73 m<sup>2</sup> has also been reported and results  
708 in a greater volume estimated for paediatric subpopulations compared to BW-based  
709 extrapolations (**Figure 7**) [164].

710 Although newborns and young infants typically receive none or only small amounts of water, the BW  
711 or BSA-based extrapolations of the volumes based on adult water intake with a medicine may be  
712 applicable to other typical fluids for these subpopulations, *e.g.* breast milk or formula milk. The down-  
713 scaling of the recommended administered volumes in adults to children may slightly overestimate the  
714 “real-life” administered volumes, as the adult value of 250 mL utilised in the extrapolation to  
715 paediatrics has been reported to overestimate “real-life” administered volumes in adults [166].

716

717 *Please place Figure 7 here*

718

719 Another reasonable approach for determining the initial gastric volumes for the pBCS might be to  
720 investigate the administered fluid volumes, considered representative for each paediatric sub-group,  
721 and establish the limits on an empirical basis [147]. In a recent study, it was found that the majority of  
722 infants and young children take no additional fluids to facilitate oral drug administration, the authors  
723 explained these results with the fact that liquid formulations were commonly administered to these age  
724 groups and that no additional fluid is required to facilitate drug intake [166]. In this case, the only  
725 available fluid for drug dissolution would be the volume of the administered formulation, adding up to  
726 5 mL for a liquid preparation [167], plus the available fluid in the fasted stomach. When fluids were  
727 used to enable medication administration, water and milk were preferred for these age groups [166].  
728 Liquids for drug intake by the older paediatric participants were usually reported as half a glass of  
729 water, juices or soda [166]. For adults, the recommended volume to administer oral medication consists  
730 of a glass of water (250 mL), whereas “real-life” studies report that only half of this volume is used  
731 for medicine intake [166]. Generally, the volumes of consumed liquids increase with advancing age.  
732 Evidence-based appropriate fluid volumes for drug administration throughout the paediatric subgroups  
733 are insufficient to underpin a limit for the reference volume and could beneficially be investigated  
734 further to provide guidelines [147]. Ultimately, it should be noted that drug administration with  
735 beverages other than water has been reported to affect the drug’s bioavailability [168].  
736 Further investigation is required on the need of matching dose strength to initial gastric volume for  
737 each paediatric subset [142]. In the case that a default dose of the drug is not set for the subpopulation  
738 of interest, an individual body-weight or BSA-based dose calculation in the phase of fast growth  
739 (*e.g.* a child of 7 years of age versus a child of 11 years of age) might lead to a BCS class change, if  
740 the dose is doubled, while the values for solubility and initial volume remain constant [146].  
741  
742 For the dose/solubility-ratio, the lowest measured thermodynamic solubility of the drug in the pH range  
743 1.2 - 6.8 has been proposed [160]. In the context of a pBCS, the choice of a relevant pH-range for the

744 solubility assessment requires more reliable data on paediatric GI fluid characterisation for the separate  
745 paediatric subpopulations, as outlined in Section 3.2. [147]. The majority of the paediatric  
746 biopharmaceutics experts surveyed by Batchelor *et al.* considered the adult pH range for solubility and  
747 dissolution appropriate for the pBCS [147].

748

#### 749 **4.2. pBCS permeability classification criteria**

750 Permeability values have been derived from absolute bioavailability data in paediatric patients [164];  
751 due to the limited pharmacokinetic data generated in paediatrics, alternative determination methods  
752 need to be examined. Calculated log P values guided the provisional classification of the drugs  
753 included in the WHO list of essential drugs for children with view to drug permeability [146].  
754 Calculated log P values showed a high linear correlation with experimentally established log P values  
755 for selected compounds ( $R^2 = 0.92$ ,  $n = 35$ ) and were therefore utilised for the BCS classification of  
756 drugs regarding their permeability [163]. Although several publications have reported log P and  
757 calculated log P to correlate to adult SI permeability, which might be applicable to paediatric groups  
758 over 2 years of age, the appropriateness of these parameters for newborns and infants remains  
759 unknown [146; 163]. In the aforementioned expert survey, the determination of the permeability limit  
760 for school children and adolescents was set as equal to the criteria of the adult BCS [147]. A PBPK  
761 modeling approach has been proposed as a means to detect the sensitivity of the cumulative fraction  
762 absorbed ( $f_a$ ) to a permeability decrease in children, results show that fluconazole would remain a  
763 Class I drug regardless of its permeability in children [125]. The controversial nature of the available  
764 information on permeability in newborns and infants poses a hurdle towards establishing meaningful  
765 permeability criteria for these subpopulations.

766

767

768

### 4.3. Challenges for the pBCS criteria determination

In spite of recent advances in the field of paediatric biopharmaceutics, significant knowledge gaps concerning absorption processes, maturation and growth of the GI tract impede the establishment of solid, evidence-based pBCS criteria. One more challenge towards the establishment of the pBCS originates in the developmental heterogeneity of the paediatric subpopulations. The necessity of a subdivision of the paediatric subpopulations has been highlighted several times; the selected groups should account sufficiently for growth and maturation changes [142; 147; 164; 169]. On one hand, the pBCS should discriminate as many paediatric age groups as needed, but on the other hand, it should not be overcomplicated and deprived of its universal and simplistic character. In order to establish distinct and adequate pBCS criteria, further research in the area of paediatric physiology and anatomy is needed, of which permeability of the SI as a function of age has been given the highest priority by the majority of paediatric biopharmaceutics experts surveyed by Batchelor *et al.* [147]. Biorelevant media and dissolution tests for paediatric formulations require further improvement, in order to establish appropriate pBCS dissolution test criteria for a potential pBCS-based biowaiver [147]. Another raised concern is whether the development of a pBCS is meaningful with respect to the available paediatric formulations. Although conventional tablets are not the formulation of choice for the youngest paediatric groups, other solid formulations (*e.g.* chewable tablets, mini-tablets, multiparticulate formulations, orally disintegrating tablets or films, lingual tablets, dispersible tablets) are gaining further popularity for low-solubility drugs [170].

Early biopharmaceutical risk assessment in paediatric drug development is crucial [171] and a simple system such as pBCS, compared to more complex tools like PBPK modeling, can offer a satisfactory estimation of the oral drug absorption and help troubleshoot potential limiting parameters [169]. A pBCS establishment would contribute to formulation bridging, line extensions, and minimising clinical trial and regulatory burden [169].

## 794    **5. Food effects on oral drug absorption in paediatrics**

795    Oral delivery continues to be the route of choice for administration of most drugs both in adult and  
796    paediatric populations. A review of submitted Paediatric Investigation Plans (PIPs) to the EMA in  
797    2009, shows that 73% of pharmaceutical dosage forms developed for paediatric use were oral dosage  
798    forms [172]. EMA defends that if possible, the formulation should be available in more than one oral  
799    dosage form (solid and liquid) in order to facilitate administration and improve acceptability [10].  
800    Liquid formulations are likely to be the most appropriate oral formulations from birth to 5 years due  
801    to swallowability and dose flexibility. Supporting evidence shows that with support and training  
802    younger children, *i.e.* below 6 years, can learn to take solid dosage forms such as tablets and capsules.  
803    The definition of an ideal formulation for all paediatric age-groups is challenging due to individual  
804    preferences and specific characteristics of patients [168]. An algorithm was proposed to guide the  
805    development of age-appropriate medicines with a focus on acceptability in every age  
806    subpopulation [173]. For newborns, liquid formulations and appropriate 2 mm mini monolithic tablets  
807    were suggested. For infants, more options become available, including liquids, mini monolithic tablets,  
808    multi particulates and orodispersible tablets. In children from 2 - 5 years, in addition to the  
809    formulations mentioned above, chewable tablets become an option [173]. Off-label drugs are widely  
810    used in paediatrics, most of the times due to lack of an appropriate paediatric oral formulation.  
811    Frequently, the most commonly used formulations in adults are modified and administered to children;  
812    crushing tablets or opening capsules to facilitate dosing are not uncommon practice [168]. Martir *et al.*  
813    reviewed the recommendations for administration of oral drugs by the British National Formulary for  
814    children and showed that the most common formulation administered to newborns are capsules, which  
815    are meant to be opened, and sprinkled or mixed with food and beverages [168]. In infants, a wider  
816    selection of formulations is recommended to be mixed with food, but capsules remain the most  
817    frequently used formulation (30%). The following section outlines the current regulations for drug  
818    administration after a whole meal or when mixed with small amounts of food or beverages and focuses

819 on the adjusted pharmacokinetic investigation approaches for paediatric formulations. Additionally,  
820 the food effect, seen from the perspective of paediatric drug formulation will be discussed.

821

## 822 **5.1. Regulations and current practice: administration after a meal**

823 The EMA and FDA guidelines provide a precise framework for the conduct and evaluation of food-  
824 effect bioequivalence studies in adults [52; 53]. The need of investigating drug pharmacokinetics in  
825 the paediatric population has been acknowledged by regulators through the issuing of relevant  
826 guidelines, while no specific regulations on food effect evaluation in paediatrics have been published  
827 [5; 174; 175].

828 In order to estimate the current trends regarding bioavailability studies for paediatric formulations, a  
829 search of the EU Clinical Trials Register was performed (status November 2017). The platform  
830 includes 31465 clinical trials with a EudraCTprotocol (16 % of which were paediatric clinical trials)  
831 and additional 18700 paediatric clinical trial reports. The search yielded 32 completed and ongoing  
832 bioavailability investigations, 16 of the studied formulations were intended for the oral administration  
833 route. Three of the studies investigated food effects; all of them were performed in an adult study  
834 population with a standardised high-caloric, high-fat breakfast. The tendency that food effects on the  
835 bioavailability of paediatric drug formulations is usually investigated in adult populations has recently  
836 been reported by Elder *et al.* [169]. In the context of food effect studies, age-adjusted meals were  
837 sometimes taken into consideration: milk was a common meal option for formulations intended for  
838 infants and younger children, whereas a breakfast was used for older children [176]. The study design  
839 should aim to investigate the maximum effect, which the meal can have on the formulation of interest  
840 [176].

841 Milk is not only the key energy source in the early life stages, but it additionally offers a caloric  
842 breakdown similar to the FDA standard breakfast (**Table 2**). The type of milk should be chosen  
843 carefully, as the various infant formula types and cow's milk has different composition and

844 physicochemical properties (Section 2.5.) and exhibit different GE-rate in infants and newborns when  
845 administered with a similar energy amount (Section 3.3.) [49; 117]. To the best of our knowledge, the  
846 effects of different milk, and formula milk types on adults GE has not been studied; the potential impact  
847 should be considered if whole cow's milk is used instead of breast milk or formula milk when  
848 conducting bioavailability or bioequivalence studies for paediatric populations in adults.

849 Food effects on drug absorption following a meal in paediatric patients have been reported [176-185].  
850 Drugs with reported food effects in adult populations showed no significant bioavailability changes in  
851 paediatric populations in the fasted versus fed state [177; 178; 181; 183; 184; 186], as it was observed  
852 for formulations of desmopressin, cefpodoxime proxetil, and methotrexate. On the contrary, food  
853 effects in paediatrics were observed for amoxicillin and ampicillin, while adult studies showed no  
854 significant food influence on the extent of drug absorption [182; 187]. Therefore, a food effect  
855 bioequivalence study in adults, following the design recommended for adult drug products, might not  
856 always be considered a reliable predictive tool for formulation performance under fed conditions in  
857 the paediatric population [176].

858 Some of the inconsistencies (*e.g.* significant and non-significant differences in drugs bioavailability  
859 due to distinct prandial state) might be explained by heterogeneous, lenient or indefinite requirements  
860 or reporting concerning the fasting time prior to drug administration (*e.g.* 30 - 120 minutes among  
861 different studies), food and fluid consumption at the time of administration, and meal standardisation.  
862 Whereas the majority of paediatric studies were based on real-life dosing conditions with regard to  
863 meal type and quantity, adult studies investigate the maximum food impact on the formulation's  
864 bioavailability. In contrast to paediatrics, adult food effect studies were usually conducted according  
865 to relevant guidelines. Although the adoption of such a guideline for paediatrics would ensure a unified  
866 approach and comparability of the investigations, ethical and recruitment issues may pose a challenge  
867 in guideline's development and applicability.

## 868 5.2. Regulations and current practice: co-administration of formulation with food/ drinks

869 Small amounts of soft foods and juices are used for improving acceptability and palatability of  
870 formulations in the paediatric population. Previous cases reporting significant drug bioavailability  
871 alterations have raised safety concerns [59; 188-190]. As a result, vehicles (discussed in Section 2.5.)  
872 which are considered safe or inappropriate to be mixed with the formulation, should be included in the  
873 product information supported by relevant *in vivo* or *in vitro* studies. The amount of soft food or  
874 beverage for co-administration is crucial for the study outcome, and a “small portion (*e.g.* one spoon)  
875 or otherwise justified quantity of the food or drinks” is recommended by the EMA [167]. There is a  
876 lack of guidance on what an exact age-appropriate amount is. EMA guideline on pharmaceutical  
877 development of paediatric medicines [167], suggests an optional *in vivo* study, which can be a separate  
878 bioequivalence study in adults [191], alternatively paediatric clinical trials can be conducted with the  
879 vehicle(s) of choice, as reported for omeprazole and montelukast paediatric formulations [192; 193].  
880 On the other hand, the sprinkling of formulations on soft food is referred in the FDA guidance on  
881 Food-Effect Bioavailability and Fed Bioequivalence Studies. In the case of investigation of  
882 formulations that are meant to be sprinkled on foods, a study in healthy adult volunteers is usually  
883 requested by regulatory authorities [53]. Investigation of the vehicle(s), as part of the paediatric clinical  
884 trial, would provide the highest reliability in terms of product safety and efficacy, although it might  
885 further complicate the trial design (through introduction of additional drug administration conditions),  
886 execution (*e.g.* patient recruitment difficulties), and outcome interpretation [169; 194].  
887 The type and quantity of studied foods or beverages varied in adult studies investigating the  
888 administration of paediatric formulations mixed with small amounts of vehicles. Quantities from one  
889 tablespoon to 120 mL were reported for the commonly used soft foods and typical fluids were  
890 investigated in volumes ranging from 5 to 240 mL [176; 190]. Possible food-drug interactions may  
891 occur with the commonly used applesauce and apple juice, *e.g.* for fexofenadine inhibition of  
892 OATP transporters in the GI tract have been reported with influence on the pharmacokinetic

893 profile [195]. A recent study reported by Batchelor *et al.* described how *in vivo*, *in vitro* and *in silico*  
894 investigations were adjusted to the previous knowledge available for two model drugs categorised as  
895 BCS class II and III [196]. Briefly, the stability of each drug in various vehicles was confirmed and  
896 possible vehicles for co-administration were selected; this was followed by a combination of *in vitro*  
897 dissolution and solubility studies and *in silico* modeling [196; 197].

898 Although the regulatory bodies acknowledge the importance of conducting paediatric studies, the  
899 paediatric trials should provide benefit for the patients and should not be unnecessary [198]. Studies  
900 performed in adults are accepted and the applicability of the results to the paediatric population should  
901 be discussed; additionally, *in vitro* and *in silico* tests are accepted as supportive evidence [167]. Finally,  
902 a regulatory statement concerning the appropriate volumes for product testing would provide valued  
903 information and ensure a more unified approach to the dedicated studies.

904

### 905 **5.3. Food effects and paediatric dosage forms**

906 The type of dosage form can contribute to the occurrence and extent of food effects. Formulation-  
907 related food effects are generally regarded as less common for oral liquid formulations, because of the  
908 liquids' greater mobility in the adult GI tract and less variable GE rate in the fasted and fed state [199].  
909 Cases of absorption delay have been reported for suspensions, solutions and powder for  
910 reconstitution [185; 200-202]. The presence of food in the stomach limited gastric disintegration and  
911 dissolution of a solid dosage form in adults, leading to delayed absorption of fosamprenavir [203].  
912 This effect might not be relevant for younger paediatric patients who are not able to swallow a whole  
913 tablet but should be considered in formulation development for school children and adolescents.

914 Drug absorption from innovative paediatric solid formulations, which are usually formulated into a  
915 hard capsule, such as multiparticulates and mini-tablets, show less dependency on the time needed for  
916 disintegration, compared to the intact formulation. Differences in the pharmacokinetic profiles have  
917 been observed after administration of a capsule and sprinkled formulation in the fed state, achieved by

918 the two formulations in an adult study [204]. McLean *et al.* compared the performance of  
919 administration of an intact carbamazepine controlled-release formulation in the fasted and fed states  
920 and sprinkling of the contents in applesauce [205]. The different treatments showed bioequivalence,  
921 although the extent of absorption in the fed state was slightly higher than in the fasted state for the  
922 intact formulation and for the sprinkled formulation administered with applesauce. The sprinkled  
923 formulation achieved slightly greater extent of absorption compared to the intact formulation in the  
924 fasted state; it remains unclear if this difference might be due to the presence of soft food used for the  
925 administration or to the drug product itself (intact capsule or sprinkled contents). The increased  
926 absorption in the presence of food was explained by the drug's properties and was not formulation-  
927 associated [205]

928 The process of formulation transfer into the SI could explain further formulation-related food effects.  
929 Small particles pass into the SI together with the chyme during the GE of the meal. In contrast, non-  
930 disintegrating dosage forms with a diameter greater than 2 mm [176] are commonly cleared into the  
931 SI during MMC Phase III (in the fasted prandial state) and less frequently through isolated distal antral  
932 contractions [206]. Generally, such formulations (matrix tablets or coated tablets) would arrive in the  
933 SI earlier in the fasted state than in the fed state, as the MMC only occurs in the fasted state [206].

934 Monolithic non-disintegrating formulations can usually be considered for paediatric patients older than  
935 6 years of age mainly for swallowability reasons [10]. The solid monolithic formulation behaviour in  
936 the presence of food is dependent on multiple factors, *e.g.* properties of the coating agent and stability  
937 in different pH media, type of matrix material used, breaking force of the tablet, and general  
938 formulation robustness when exposed to different GI fluids. Investigations performed in adults report  
939 remarkable differences between formulations, with positive food effects (an increase of exposure  
940 up to 50%) with or without absorption delay, or significantly reduced drug absorption, or no influence  
941 of the prandial state [207; 208]. Formulation-related food effects for theophylline in paediatric patients  
942 aged between 4 and 14 years revealed great variability after drug formulation administration after a

943 standardised breakfast, consisting of approximately 20% fats, 70% of carbohydrates, and  
944 up to 13% of proteins; the total caloric count was normalised per BW 10 - 15 Kcal/kg [209]. One  
945 formulation (Somophyllin<sup>®</sup>, sustained release sprinkle product) showed no changes regarding the  
946 extent of absorption, but a delayed absorption. A second sustained-release  
947 formulation (Theo-Dur<sup>®</sup> sprinkle) showed less variable *in vivo* performance in the fasted state  
948 compared to the fed state; this sprinkled formulation performed similarly in adults and paediatric  
949 patients, although the negative food effect was more pronounced in the paediatric group [207; 209].  
950 The exposure achieved by the monolithic theophylline formulation (Uniphyllin<sup>®</sup>, sustained-release  
951 tablet) in the fed state was doubled compared to the fasted state, due to dose dumping, which occurred  
952 in 50% of the population. GI transfer delay might not only result in an unfavourable impact on the  
953 timing of the drug effect when rapid drug onset is required, but it can have an impact on drug  
954 bioavailability for drugs with narrow absorption windows, as observed for pregabalin controlled-  
955 release tablets in adults [210]. In order to ensure that the extrapolation of food effects for non-  
956 disintegrating or controlled-release formulations from adults to paediatrics is reliable, further accurate  
957 knowledge about the MMC process, size of particles that can pass through the pylorus sphincter, GI  
958 motility, and transit times across the GI is essential.

959

## 960 **6. *In vitro* evaluation of drug products for paediatrics**

961 GI developmental changes must be addressed in the design of *in vitro* models to achieve adequate  
962 predictions of oral drug absorption as a function of age. In the following subsections, recently proposed  
963 *in vitro* methodologies will be presented.

964

### 965 **6.1. Paediatric biorelevant media**

966 Compositional differences in GI fluids for the development of biorelevant media, representative of  
967 newborns and infants in the fasted and fed state, have recently been addressed by Maharaj *et al.* [109].

968 The proposed media gathered information on physiological relevant components of GI fluids, such as  
969 pepsin concentrations, food type for fed state media, bile salt concentration, pH, osmolality, and others  
970 (**Table 4**) [109]. The paediatric biorelevant media were developed for the youngest subpopulations,  
971 newborns and infants (1 - 12 mo), and were based on the adult biorelevant media composition [109].  
972 As discussed above, these age groups show the highest degree of developmental differences, when  
973 compared with adults. Values reflecting the physiological conditions (where available) were set in  
974 order to simulate more closely the GI composition of fluids in newborns and infants. Solubility studies  
975 of seven BCS class II drugs were performed in the paediatric biorelevant media. The solubility changes  
976 in paediatric media, compared to the solubility in adult biorelevant media, was evaluated based on risk  
977 assessment (risk set when values were outside the 80 to 125% range) [109]. The impact of age-related  
978 alterations in GI fluid composition on compound solubility was revealed, as for 6 of the 7 BCS Class  
979 II compounds investigated the solubility in at least one of the developed paediatric media fell outside  
980 the 80 to 125% range compared to the solubility in adult media [109].

981 Kamstrup *et al.* performed a literature review of relevant physiological components and proposed a  
982 composition of physiologically relevant medium for newborns and young infants (0 – 2 mo)  
983 representative of the fasted and fed state. Biorelevant components addressed included bile salts  
984 concentration, the ratio of bile salts to phospholipids, and digestive enzymes (pepsin, human gastric  
985 lipase, and pancreatic triglyceride lipase). The media were developed with the purpose of being used  
986 for an *in vitro* lipolysis method, and it has been applied to study the *in vitro* lipolysis of furosemide,  
987 which will be discussed in the next section [48].

988

989 *Please place Table 4 here*

990

991

992

## 6.2. Evaluation of drug products characteristics

*In vitro* dissolution testing is a standard method used for the characterisation of drug products. Questions regarding the relevance of dissolution tests within paediatrics have been raised in a recent review since dissolution testing mainly aims to characterise solid oral dosage forms, and its applicability to commonly used paediatric formulations as liquids, semisolids, or orally disintegrating tablets is debatable [169]. Nevertheless, as mentioned in Section 4.2., paediatric solid formulations (*e.g.* chewable tablets, mini-tablets, multiparticulates, *etc.*) are gaining further popularity for low-solubility drugs [170]. The mini-paddle apparatus, that is based on the pharmacopoeia paddle apparatus (USP II apparatus with scaled down dimensions), and the flow-through cell apparatus (USP IV apparatus) have been acknowledged as superior to USP I and II apparatus, in terms of simulating paediatric conditions [169].

New paediatric dissolution setups have been proposed by Karkossa *et al.*, which investigated different dosing scenarios of a paediatric formulation of sodium valproate (BCS class I compound;  $pK_a = 4.8$  and  $\log P = 2.75$ ) extended-release mini tablets formulation (Orfiril long<sup>®</sup>) [211]. Two scenarios were investigated: i) impact of gastric pH on drug release, in a new dissolution apparatus (proposed in the study as a modified USP III vessel (shortened height and glass ring in outer surface) in a water bath with stirring provided by a magnetic stirrer (550 rpm), and ii) impact of co-administration of different vehicles in a mini-paddle apparatus with a subsequent transfer to a new dissolution apparatus. Residence times for the simulation of each stage of GI tract were 30 min for the gastric compartment, 240 minutes for the SI and 480 min for the proximal colon [216]. Gastric fluids were simulated by mixing 10 mL of simulated gastric fluid (pH range 1.8 - 4.0), and 50 mL of water. After 30 min, simulated gastric contents were transferred to a second vessel where 110 mL of simulated small intestinal fluid (pH 6.8 bicarbonate based simulated intestinal fluid, 50 mL) was present. Results showed that gastric pH had no impact on overall drug release. During the short-simulated fasted gastric

residence time of 30 min, almost no drug was released. Approximately 50 - 60% of the dose was released during simulated small intestinal residence time, and drug release was complete at the end of the simulated passage through the SI and proximal/mid colon. The impact of co-administration of dosing vehicles on drug release was investigated with a two-stage dissolution model. Gastric residence of the administered formulation with water, apple juice or soft foods (applesauce, yoghurt, or pudding) was performed in the mini-paddle apparatus (170 mL; 30 min; 75 rpm). After the first 30 minutes, 60 mL of the simulated gastric contents together with the tablets were transferred into the modified USP III vessel, with the addition of 50 mL of bicarbonate-based simulated intestinal fluid, in order to simulate the intestinal conditions. Drug release under these conditions was screened for 12 h representing residence time in the SI and proximal colon. These release studies revealed that administration of the formulation with other beverages, and soft foods should not affect bioavailability and confirmed the appropriateness of the paediatric dosing recommendation for this formulation [211].

*In vitro* release profiles from experiments simulating co-administration with different soft foods (applesauce, yoghurt, and pudding) were similar to those obtained in water and apple juice, suggesting that co-administration of soft food will not affect bioavailability of the extended-release formulation. Brassine and Fotaki investigated the effect of age-related physiological parameters, the effect of dose, and the effect of hydrodynamics on the performance of carbamazepine (BCS class II; non-ionisable in the physiological pH range;  $\log P = 2$ ) for paediatric use. Biorelevant media, with adjusted bile salt concentration, were incorporated in an *in vitro* dissolution testing to evaluate the effect of age on dissolution and release of carbamazepine pellets prepared by extrusion-spheronisation [212]. The dissolution study was conducted with the dissolution USP IV, and parameters were adjusted (flow rate and residence time) to simulate GI physiological parameters in paediatric groups (newborns, infants and children) and adults. Furthermore, the effects of the hydrodynamics on the dissolution was studied by setting the closed-loop mode (for simulation of gastric conditions) followed by the intestinal conditions simulated with the open-loop mode. Results showed a slower release of carbamazepine

under all paediatric-simulated conditions when compared to the conditions used for the adults; nevertheless, no significant differences were revealed for the release of carbamazepine between the investigated paediatric groups [212].

The same USP IV biorelevant setup for the fasted state was performed to investigate age-related differences in the dissolution performance of Tegretol® 200 mg tablets [213]. Paediatric biorelevant media developed by Maharaj *et al.* were used. Results showed that carbamazepine was not completely dissolved in all of the tested conditions. An age-dependent dissolution profile of carbamazepine from Tegretol® tablet was observed in the two studied paediatric groups revealing the impact of the GI differences (fluid composition and transition times) between the age groups on dissolution. Furthermore, the use of the closed-loop mode for the simulation of dissolution in the gastric compartment resulted in a higher discrimination of the dissolution profiles between the two age groups [213].

Non-compendial apparatus for the evaluation of paediatric formulations have also been proposed [169]. A TNO Gastro-Intestinal Model (TIM) paediatric setup (TIMpaediatric) has been developed, which simulates conditions in the GI tract determined by four interactive factors: i) degree of maturation of the age groups (term newborns; infant; or toddler), ii) food type, iii) health status and vi) co-medications [214]. The TIMpaediatric was applied to investigate age-related effect of co-administration of food matrices with paracetamol (BCS class I; pKa = 9.5; log P = 0.2), diclofenac (BCS class II; pKa = 4.15; log P = 4.51), and esomeprazole (BCS class II; pKa = 4.78; log P = 0.6), where bioaccessibility curves were constructed (amount of drug available when sampling). Selected dosage forms were tested in the *in vitro* TIMpaediatric by taking into consideration the simulation of daily practices used for administration of paediatric medicines, including crushing of tablets, mixing drugs with appropriate amounts of food (simulations performed for administration with formula milk vs. water), and simulation of the co-administration with proton pump inhibitor were simulated

(simulations performed under high gastric pH conditions (pH 6.7 to 6.0). A validation experiment of TIMpaediatric was performed by comparing *in vitro* bioaccessibility profile with *in vivo* clinical data for Calpol® syrup suspension (containing paracetamol) mixed with food, under term-newborn, infant and toddler GI conditions, and similar bioaccessible amounts were found when compared to plasma concentration profiles, demonstrating the quality of the predictions obtained from the TIMpaediatric. Further experiments were then performed, paracetamol formulations investigated were Sinaspril® syrup, Sinaspril® tablets (crushed), and Marel® tablets (crushed, also contain caffeine) and results showed that paracetamol concentration available for intestinal absorption was independent of the different GI conditions of the age-groups, the tested dosage forms, the food matrix, and the co-administration of a proton pump inhibitor. Two brands of enteric-coated diclofenac tablets were tested (Voltaren® vs. Diclofenac Sodium Teva®), results showed that diclofenac available for absorption is not influenced by co-administration of a proton pump inhibitor, but the administration of a crushed tablet with infant food showed a significant positive effect on diclofenac bioaccessibility. The investigated formulation of esomeprazole formulation was Nexium® enteric coated tablets (crushed), and results showed after a first dose of a crushed tablet to infants was low, but increases after repeated dosing due to a higher gastric pH by the proton pump inhibitor [214].

1084

A recent literature review has been performed with the intention of developing an *in vitro* digestion model for newborns and infants (0 - 2 mo) based on a previous lipolysis model for adults [48]. Considerations were taken to represent changes during the feeding cycle of newborns and infants, which is approximately 3 h. The *in vitro* digestion model was argued to be more appropriate than other *in vitro* predictive tools, due to the frequent feeding of newborns. Since newborns are mainly in the fed state, this can ultimately affect the composition of the fluids and hydrodynamics available for drug dissolution and solubilisation processes. For the design of the *in vitro* setup, several physiological factors were reviewed including GE, SITT, gastric volumes *etc*, and suggested flow rates for the

transfer of GI fluids under fed state conditions. A two-step model was proposed as more appropriate, comprising a gastric phase and an intestinal phase, where the duration of each phase, and the transfer between the two phases, should be reflective of GE and SITT in newborns/young infants. The performance of Furix® 20 mg furosemide (BCS class II compound) tablets, in the newborn and infant GI tract was investigated with this setup [215]. Fasted and fed states were simulated to represent feeding patterns in the studied population; therefore, the fasted state assumed the presence of small amounts of milk. The physiological relevant media used were composed of a chosen appropriate milk (Nan 1, Nestle®), and the inclusion of digestive enzymes (*i.e.* pancreatic triglyceride lipase and pepsin and human gastric lipase). Two *in vitro* models simulating the GI transfer were utilised. In the immediate transfer model, a concentrated intestinal medium was added in a single step at a designated time point, altering the digestion medium from gastric to intestinal medium instantaneously. In the continuous model, digestion medium was continuously pumped from a gastric to an intestinal compartment, where the concentrated medium simulating the SI fluid was present. The results suggested that the oral bioavailability of furosemide in this subpopulation increased in the presence of food [215]. In contrast, parameter manipulation, such as simulation of food digestion and crushing of the tablets seemed to cause no alterations in the oral performance of furosemide [215]. The entire furosemide dose was completely soluble in the aqueous phase of the simulated postprandial state, which led the authors to conclude a high bioavailability of the drug in the presence of food [215]. GI digestion of food ingested showed no effect on the amount of furosemide solubilised, nor did the administration of the pure powder form of furosemide, which indicates that the dosage form does not influence the oral performance of furosemide. The results suggest that presence of food in newborns and young infants is affected by the pH at fed state and volume available for drug solubilisation, which allows the that the entire dose of furosemide is solubilised in the digestion studies without being affected by excipients and digestion. On the contrary, In order to further evaluate and validate these results and usefulness of the *in vitro* models, *in vivo* data is required [215].

1118 A considerable amount of progress has been made in the development of paediatric *in vitro* dissolution  
1119 tests. Compendial and non-compendial apparatus have been used, and biorelevant setups have been  
1120 proposed. Nevertheless, further research is required to better characterise GI physiological and  
1121 anatomical changes in paediatrics, in both the fasted and fed state, which will inevitably allow  
1122 optimisation and proposal of more biorelevant models. Validation of the *in vitro* setups with clinical  
1123 data would be helpful to establish confidence in these methods so that they can be used to inform the  
1124 development of more complex and innovative paediatric dosage forms. Furthermore, a combination of  
1125 biorelevant *in vitro* tests with paediatric PBPK models is expected to improve knowledge and  
1126 understanding of oral drug absorption in paediatrics [169].

1127

## 1128 7. *In silico* evaluation of drug products for paediatrics

1129 Regulatory frameworks allow investigators to use existing adult clinical data as supporting evidence  
1130 for efficacy in paediatric populations [216; 217] assuming that disease progression and exposure-  
1131 response in both populations are expected to be similar. A significant number of conducted  
1132 pharmacokinetic and efficacy studies in the paediatric population did not achieve labelling for various  
1133 reasons, such as poor study design planning or inappropriate dose determination, indicating the need  
1134 of robust and reliable approaches for interpreting and benefiting from already available clinical data  
1135 [218].

1136 Predicting *in vivo* drug performance relies on the estimation of the drug's ADME properties and the  
1137 understanding of the physiological processes influencing pharmacokinetic parameters. Scaling of  
1138 parameters for different organisms can be facilitated by calculations using isometric or allometric  
1139 functions, or be performed on a more complex level such as PBPK modeling [219].

1140

1141

1142

## 1143 **7.1. Allometric scaling**

1144 Paediatric parameters are calculated as a function of the normalized *BW* or *BSA* and a specific  
1145 allometric coefficient [220]. For example, a fixed allometric coefficient of 0.75 is used for clearance  
1146 scaling, whereas a value of one is used for the down-scaling of the volume of distribution [220].  
1147 Mahmood *et al.* reported that drug clearance calculated by allometric scaling with an adjusted  
1148 allometric exponent, and clearance predicted via PBPK modeling achieved similar results for  
1149 newborns and infants < 3 months of age; the studied drugs were mainly cleared by  
1150 glucuronidation [221]. The prediction accuracy for newborns and infants is expected to be  
1151 compromised for drugs undergoing more complex metabolism, due to variable enzyme ontogeny,  
1152 maturation processes, and alternative metabolic pathways. The use of fixed-coefficient allometric  
1153 scaling is recommended after 2 - 5 years of age when the maturation processes can be considered  
1154 completed [220; 222-225]. The method's simplicity and unproblematic utilisation contribute to its  
1155 widespread application in clinical settings.

1156

## 1157 **7.2. PBPK modeling**

1158 While allometric functions are still useful for scaling ADME properties, PBPK modeling would be  
1159 preferred, if more complex processes need to be studied [226]. PBPK modeling is an *in silico*  
1160 biopharmaceutical tool describing the pharmacokinetics of a compound while taking the drug  
1161 properties and drug product characteristics into consideration when introduced to a specific system  
1162 (*e.g.* healthy adult body) according to a pre-defined study design (*e.g.* administered formulation). In  
1163 adults, PBPK modeling is often used to predict drug product performance [227]. In paediatrics its use  
1164 has increased the last decade, recognised by the EMA and FDA by publishing guiding documents on  
1165 the appropriate use of previous knowledge (*e.g.* adults) in paediatric medicines development and by  
1166 PBPK modeling guideline [216; 228; 229].

1167

Two modeling strategies may be used to construct a PBPK model, depending on the input used for the system. The “top-down” approach is based on observed clinical data as a model for the system (human body), followed by an investigation of the components and occurring processes (*e.g.* parameter estimation from plasma drug concentration-time profiles). In contrast, a model that is based solely on a combination of physiological processes parameters and *in vitro* experiments, generating numerous connected compartments, which represent an organ or the whole body, is regarded as a “bottom-up” approach (usual PBPK model). While the latter depends on absolute knowledge of details, which contribute to drug performance in order to predict pharmacokinetics and pharmacodynamics *a priori*, the former relies completely on already obtained clinical data but may not be able to provide the necessary detail in each case. A “middle-out” concept that benefits from the combination of the two approaches might offer a sensible compromise when some parameters have not been reliably estimated yet or need refinement through already available clinical data [230; 231]. Several software platforms enable the building of PBPK models for adults (*e.g.* GI-Sim<sup>®</sup>, PK-SIM<sup>®</sup>, Stella<sup>®</sup>, MATLAB<sup>®</sup>), while some of them do not provide an integrated detailed model of oral absorption (MATLAB<sup>®</sup>) [227]. Additionally, commercially available software platforms, such as, GastroPlus<sup>®</sup> (Simulations Plus Inc. [232]), and Simcyp<sup>®</sup> (Simcyp Ltd., Sheffield, UK [233]), facilitate the development of whole-body PBPK models and models focused on oral drug absorption for adults and their further extrapolation to the paediatric population [234].

1186

### 1187 **7.2.1. Paediatric PBPK models: current status**

1188 A search in PubMed with the keywords “Paediatric PBPK” OR, “PBPK model Paediatric” AND,  
1189 “infants”, “newborns”, “children”, “adolescents” OR, “PBPK paediatric modeling”, OR “mechanistic  
1190 model paediatric pharmacokinetics” identified 405 relevant entries, including reviews and original  
1191 articles (status August 2017). A snowball sampling of the review articles for potentially mentioned

1192 articles, complying with the focus of the search was performed and the papers, which reported a  
1193 developed PBPK model for paediatric populations, were selected (n = 93; **Figure 8**).

1194

1195 *Please place Figure 8 here*

1196

1197 Pre-term and term newborns were found to be less studied (**Figure 8A**) – a trend also reported in  
1198 clinical trials performed in paediatrics. Over 80% of the paediatric PBPK models were developed  
1199 based on a PBPK model for adults (**Figure 8B**). Evaluation of the aims of the models developed  
1200 showed numerous successful mechanistic clearance and drug-disposition models for intravenous (IV)  
1201 administered drugs. Twenty nine percent of PBPK models following oral drug administration have  
1202 been established until now (**Figure 8C**). A similar trend was observed for the adult PBPK models,  
1203 where modeling oral drug absorption accounted for only 12% of the developed PBPK models [235].  
1204 The biggest part of the PBPK models was built with the help of a commercially available software  
1205 platform, whereby Simcyp® appeared to be the most frequently used one (**Figure 8D**). Additionally,  
1206 the BCS classes of the orally administered drugs, used for modeling were analysed (**Figure 9**).  
1207 A preference of PBPK model development for highly soluble drugs might be related to the fact that  
1208 these would usually not introduce further solubility or dissolution complications in addition to the  
1209 model uncertainties originating in the complexity of the oral drug absorption processes itself [7]. The  
1210 low number of medicines modeled containing BCS IV compounds can be explained by the great  
1211 number of uncertainties accompanying both permeability and solubility of these compounds in  
1212 paediatric populations.

1213

1214 *Please place Figure 9 here*

1215

1216

### 1217 7.2.2. Building a PBPK model

1218 The most common approach in constructing a paediatric PBPK model is to build first the adult  
1219 disposition PBPK model (**Figure 10, Step 1**), and after ensuring reliability of the intravenous model,  
1220 oral administration can be incorporated (**Figure 10, Step 2**) [236].

1221 If the adult PBPK model provides an adequate prediction of the available clinical data in adults, the  
1222 scaling to the paediatric population could proceed [237]. By selecting a specific paediatric population  
1223 as the study population in the software platform, default age-dependent changes and parameters of  
1224 physiology and anatomy are incorporated into the paediatric model.

1225

1226 *Please place Figure 10 here*

1227

1228 *Step 1: Building drug disposition PBPK model for adults*

1229 For the development of a PBPK model, system-dependent and compound-dependent parameters are  
1230 needed [7; 169; 236; 238-240]. System-dependent components (*i.e.* organ sizes, blood flow, and tissue  
1231 composition) are incorporated in the commercially available software platform for the species of  
1232 interest (*e.g.* human, dog, mouse). Drug-dependent parameter values are derived from literature or  
1233 experimental data. Parameters describing the drugs physicochemical properties (*i.e.* molecular weight,  
1234 log P, pKa, compound type, and pH-dependent solubility) are used. Drug parameter values that depend  
1235 on the drug and the adult human physiology (fraction unbound, permeability, plasma/blood-  
1236 partitioning, intrinsic clearance) may require further investigations and adjustment for the modeled  
1237 system or special population [240].

1238

1239 The human body is represented as a network of organs and tissues, linked by an arterial and venous  
1240 blood, with attributed specific blood flows. The disposition model is based on differential equations  
1241 that describe the distribution of the drug into the different tissue compartments and organs [7; 227;  
1242 235]. A simulation takes place when the input parameters and the study design (*e.g.* selecting study

1243 population, age, sex, dose strength, dosing conditions, duration of infusion, *etc.*) have been defined. If  
1244 the pharmacokinetic simulations of the model incorporating predicted values for clearance or volume  
1245 of distribution mismatch the observed clinical intravenous data, model optimisation can be achieved  
1246 by informing the model with clinical data (if available). Once the predictions forecast the observed  
1247 data from IV administration, the modeling of oral drug absorption can be undertaken [236; 237].

1248

#### 1249 *Step 2: Building oral absorption PBPK model for adults*

1250 The oral absorption of a drug can be modeled in detail using the relevant available commercial software  
1251 oral models, such as ACAT™ model (GastroPlus®), or ADAM™ model (Simcyp®). In both models, the  
1252 GI tract is divided into sequentially connected transit compartments, beginning with the stomach,  
1253 which gives the input for the SI according to a specific emptying-rate. The SI is further divided into  
1254 sub-compartments (representing the duodenum, upper and lower jejunum, and upper and lower ileum)  
1255 and it is linked subsequently to the colon. Each compartment exhibits different surface area, luminal  
1256 fluid composition and volumes, and metabolising luminal enzymes. In addition to the mass-balance  
1257 differential equations, the model considers the local pH-dependent solubility by the incorporation of  
1258 the Henderson-Hasselbalch equation and calculates the dissolution behaviour with *e.g.* Noyes-Whitney  
1259 kinetics [227; 240]. In this step, the drug formulation, which is to be investigated, is incorporated. If  
1260 relevant, available dissolution data from biorelevant *in vitro* tests can be used to inform the model  
1261 [227]. Ultimately, drug dissolution, precipitation, or supersaturation are considered if relevant for the  
1262 drug/drug formulation; hence the absorbed, degraded, or metabolised drug fraction are taken into  
1263 account simultaneously [227].

1264 The permeability of a drug can be derived from *in vivo* or *in vitro* studies or estimated via the utilised  
1265 software. In case that active transporters are involved in the drug uptake, the kinetic parameters  
1266 (*i.e.* Michaelis Menten constant ( $K_m$ ) and maximum rate achieved at saturating substrate concentration  
1267 ( $V_{max}$ )) of the substrate, the transporter availability, and activity, at the sites of interest are needed and  
1268 an adequate estimation of permeability-limited transport through the cell membranes should be

1269 included [239]. If relevant information is not available in the literature or from *in vitro* studies  
1270 performed, a model fitting based on *in vivo* data from oral drug administration studies can be  
1271 applied [240]. The accuracy of the model's prediction needs to be confirmed and refinements should  
1272 be undertaken if needed before application to other populations can proceed.

1273

### 1274 *Step 3: PBPK model conversion to the paediatric population*

1275 The GastroPlus® platform (PBPKPlus™ module) generates physiological parameters for the model by  
1276 its feature Population Estimates for Age-Related Physiology (PEAR®). It takes the population  
1277 (e.g. American/Western Japanese, and Chinese), gender (male/female) age, gestational age (including  
1278 pre-mature newborns), BW, height, body-mass index, percent body fat into account and adjusts tissue  
1279 volumes and perfusion rates accordingly [241]. Correspondingly, in the Simcyp population-based  
1280 simulator (Simcyp®), physiological parameters are adjusted by converting to the available module  
1281 Simcyp® Paediatric [237]. Age-dependent changes are introduced to the full PBPK model, e.g.  
1282 adjustments of compartment volumes, blood perfusion rates, tissue compositions, specific partition  
1283 coefficients for tissues. In addition to these adjustments, a model with focus on oral drug absorption  
1284 in paediatrics addresses GI specific physiological parameters such as GE rates, SITT, fluid volumes  
1285 throughout the GI tract, composition of the GI fluids, GI hydrodynamics, and size of the separate  
1286 compartments of the GI tract; all of these parameters influence drug movement through the GI tract,  
1287 drug dissolution and absorption rates, and therefore drug product performance following oral  
1288 administration [125; 242].

1289 In the ACAT Model (GastroPlus®), GI organs and their respective blood flows change dependent on  
1290 age, intestinal length and radius are calculated according to intestinal growth data and are based on the  
1291 assumption that proportional growth occurs throughout the SI [242]. Age-adjusted SITT values are  
1292 incorporated in the model, although it should be noted that the data used for this assumption is highly  
1293 dependent on the method utilised for the measurement (Section 3.4), thus introducing a level of model

1294 uncertainty [242]. Furthermore, fluid secretion volumes are scaled as a function of age for the  
1295 paediatric population in the ACAT™ model (GastroPlus® version 9.0) [243]. Adult values are adopted  
1296 for the gastric and intestinal pH and GE in the model. The villi structure is also reflected, as for adults,  
1297 due to the qualitative nature of the information available (Section 3.5); this leads to a large uncertainty  
1298 for the estimation of passive absorption of drugs, especially for the youngest populations < 3 years of  
1299 age [242]. Due to the scarcity of data found for bile salt composition and site of reabsorption, adult  
1300 parameter values are adopted; model inaccuracies can be expected for compounds that exhibit great  
1301 solubility and permeability dependency on bile salts. Ultimately, intestinal enzyme levels for CYP3A4  
1302 are implemented in the modeling platform according to age, based on paediatric *in vivo* data, but for  
1303 less well-characterised intestinal enzymes and transporters adult values are utilised. Since expression  
1304 density and ontogeny are expected to show differences in newborns and infants compared to adults,  
1305 the user has the option to modify the default values of enzyme/transporter expression levels per  
1306 intestinal compartment based on surface area, and the enzyme/transporter density in adults [242].

1307

1308 Within the Simcyp® platform, the intestinal diameter, length and surface area are scaled according to  
1309 age by using BSA-based functions; here it should be noted that no correction is incorporated for the  
1310 potentially additional available surface area created by villi and microvilli with increasing age [35].  
1311 Fasted gastric pH for paediatrics is assigned similar values as for adults, except for the age groups of  
1312 newborns and infants. For these paediatric subpopulations, higher values are considered appropriate in  
1313 order to simulate the more frequently administered meals and the absence of a ‘true’ fasted state [35].  
1314 Salivary secretion is described by a BW-based function and is further incorporated in the calculation  
1315 of the fasted gastric volume. The fed gastric volume is calculated according to BW and is characterised  
1316 for 3 age groups, based on the different daily fluid requirements and the feeding frequency [35]. Fluid  
1317 secretion volumes are scaled based on BSA-functions. Intestinal pH values observed in adult  
1318 populations are designated to all paediatric subpopulations [35]. GE is described as a function of meal

type, the user is given a choice of simulating the effects of liquid, semi-solid or solid meal ingestion; the SITT values for paediatrics are adopted from the adult model [35]. Ultimately, the ontogeny and presence of metabolising luminal enzymes of the CYP and UGT families are calculated in the same pattern as the well-defined CYP3A4 in paediatrics. The enzyme abundance follows a BSA-dependent function, specifically assigned to the different intestinal segments. Assumptions are needed for some less investigated parameters, such as intestinal transport proteins, for which adult values are adopted [35; 244]

Simulation in paediatric subpopulations usually begins in the subpopulation most similar to adults, *e.g.* adolescents or children, proceeding gradually to the younger subpopulations [236]. Throughout the process, confirmation, validation, and if necessary, refinement steps are undertaken. The gradual adaption of the model facilitates easier detection of probable refinement demand [236]. Mismatches between the predicted and observed paediatric clinical data should be further investigated through parameter sensitivity analysis (PSA) [35; 125; 236]. This is also a useful approach for investigating “what-if” scenarios related to the assumptions and uncertainties which were included in the model throughout development [216].

1335

### 1336 **7.2.3. Examples of paediatric PBPK models: focus on oral drug absorption**

Prediction of oral drug exposure to sotalol was built over the entire paediatric age range (*i.e.* newborns, infants, children and adolescents) and adults, by Khalil *et al.*, with the utilisation of two modeling software platforms, Simcyp® (version 12.1) and PK-SIM® (version 4.2.2) [238]. Sotalol is an amphoteric compound (pKa values: 8.3 and 9.7) with hydrophilic characteristics (log P of 0.37). Firstly, the adult disposition model was developed. Parameters from the model after IV administration were kept constant, and parameters relevant to oral drug absorption were adjusted. Lastly, age-specific anatomical and physiological changes, which are part of the paediatric module of the software, were

1344 taken into account. Adult values were used for several parameters, such as gastric and intestinal pH,  
1345 GE, SITT, intestinal enzyme ontogeny/abundance, and intestinal transporter ontogeny/abundance.  
1346 Drug-specific parameters, including solubility, remained unchanged throughout all age groups  
1347 regardless of the utilised software. Information on the sotalol formulations investigated with the PBPK  
1348 models, was not provided. Further complications arose from the data scarcity of neonatal and infant  
1349 pharmacokinetic data, which are needed in order to validate the PBPK models. Simulations from both  
1350 paediatric models (Simcyp<sup>®</sup> and PK-SIM<sup>®</sup>) were comparable and showed acceptable adequate  
1351 description in adults, adolescents, children and infants, when compared with *in vivo* clinical data. For  
1352 newborns, the predictions generated with the Simcyp<sup>®</sup> simulator successfully reflected the time at  
1353 which  $C_{\max}$  is reached ( $t_{\max}$ ), and rate of elimination ( $k_e$ ) when compared with the clinical *in vivo* data,  
1354 but were inadequate in the forecasting area under the curve (AUC)  $AUC_{\text{last}}$  in newborns, and maximum  
1355 plasma concentration reached ( $C_{\max}$ ) in newborns; moreover the model tended to under-predict drug  
1356 plasma levels in all paediatric subpopulations ( (for  $AUC_{\text{last}}$ ,  $C_{\max}$ , and  $t_{\max}$  for all of the paediatric  
1357 populations studied: mean observed/predicted ratios >1). Results obtained with the modeling platform  
1358 PK-SIM<sup>®</sup> successfully predicted  $AUC_{\text{last}}$ ,  $C_{\max}$  and  $k_e$ , although the pre-defined two-fold error range  
1359 was exceeded for  $t_{\max}$  in newborns and infants (<1 yr). The results from this study confirm the  
1360 importance of gaining deeper insight into intestinal paracellular permeability, transporter ontogeny,  
1361 intestinal fluid dynamics, and characteristics of the intestinal unstirred boundary layer in order to  
1362 develop a reliable PBPK model for oral drug administration [238].

1363

1364 Paediatric PBPK models have been developed (GastroPlus<sup>®</sup> version not mentioned) for two highly  
1365 soluble, and highly permeable compounds (sotalol and paracetamol) by Villiger *et al.* [236]. As  
1366 previously described, Sotalol is an amphoteric compound, and paracetamol is a hydrophilic weak acid  
1367 ( $pK_a = 9.5$ ;  $\log P = 0.2$ ). The same approach for model building was used as in the first example, where  
1368 a drug disposition model was developed to simulate the IV profiles in adults, followed by the

adjustment of parameters for oral administration in adults. Secondly, after attaining confidence in the adult models, the paediatric oral model was built in a stepwise approach. In this study, *in vitro* dissolution testing was performed for immediate-release formulations, Sotalex<sup>®</sup> tablets (containing sotalol) and Dafalgan<sup>®</sup> powder-filled sachets (containing paracetamol), in order to investigate the formulation performance and understand drug release in the GI tract [236]. For the *in vitro* tests, conditions more closely reflecting newborn physiology were simulated by adjusting GI volumes to 5 mL and the use of formula milk as dissolution medium, in comparison to an adult setup, represented by 250 mL of adult biorelevant media. Results showed that the described age-adjusted conditions did not influence dissolution of both test drugs. Dissolution information was not used to inform the model building, and further information on the formulations and their incorporation into the models was not reported for the performed simulations. PSA revealed that slower mean gastric transit times led to slower absorption rate of sotalol and paracetamol in newborns and infants when compared to older children and adults [236]. Good predictions were observed after scaling age-dependent factors incorporated in the software used (Gastroplus<sup>®</sup>), for children 2 - 11 years, but discrepancies were again seen by Villiger *et al.* for younger populations with under-prediction of  $C_{\max}$  and over-prediction of  $t_{\max}$  (newborns and infants) [236]. As previously described in the first example, Khalil *et al.* also obtained good predictions for other age-groups, except for newborns [238]. Interestingly Khalil *et al.* did not conduct PSA, but Villiger *et al.* took advantage of PSA to understand the critical parameters of oral drug absorption for these compounds, and subsequent improvement of the models predictions was possible, demonstrating the importance of conducting such analysis [236]. Adjustments of mean gastric transit times (default value of 0.25 h for all age groups) was performed by incorporating prolonged times. Sotalol simulations were improved by changing mean gastric transit time from 2.3 to 2.5 h in both infants and newborns, while for paracetamol, a prolonged mean gastric transit time of 0.8 to 1.5 h in infants and 0.1 to 0.8 h in newborns gave the best predictions. Improvements of  $C_{\max}$  and  $t_{\max}$  (Observed/Predicted ratios) were seen for the simulations in newborns and infants.

1394 A mechanistic absorption model for predicting formulation performance in paediatric subjects has been  
1395 described for paracetamol and theophylline (BCS class I compounds), and ketoconazole, (BCS class  
1396 II compound) for the fasted and fed state using the ADAM<sup>TM</sup> module of the Simcyp<sup>®</sup> software  
1397 paediatric (version 15.1) [35]. Theophylline simulations were developed for the oral administration of  
1398 an oral solution to newborns, infants, and adults; the aqueous drug solubility was used for the model.  
1399 Although the investigated paracetamol formulation was a suspension and required the incorporation  
1400 of a dissolution model within ADAM<sup>TM</sup>, no further dissolution testing was performed as previous  
1401 studies have reported that drug dissolution was not the absorption rate-limiting step [35; 236]; again,  
1402 the aqueous drug solubility value was incorporated in the model. Ketoconazole is a drug with a highly  
1403 pH-dependent aqueous solubility; hence, reference solubility values at physiologically relevant pH  
1404 range 3.3 - 7.5 were used to inform the model; dissolution data were not included as an input parameter.  
1405 Additionally, the model considers further processes such as intraluminal supersaturation and  
1406 precipitation and bile salt mediated solubility. Paracetamol and ketoconazole simulations were  
1407 developed for the oral administration of a suspension to newborns, infants, children and young adults.  
1408 Theophylline plasma profiles were predicted with good accuracy (observed/predicted ratio: 0.85 - 1.25  
1409 range); the accuracy of the predictions for paracetamol and ketoconazole was evaluated as reasonable  
1410 (observed/predicted ratios: 0.82 - 1.33-fold for paracetamol) [35]. The prediction for full-term  
1411 newborns failed to predict the observed pharmacokinetic data for pre-term newborns. PSA revealed  
1412 that extremely prolonged GE times, resulting from the absence of enteral feeding, could lead to a low  
1413 systemic exposure as observed *in vivo* (*i.e.* decrease of  $C_{max}$  in the range GE 2 - 20 h), and that elevated  
1414 gastric pH values (*i.e.* values higher than 4) are less likely to cause low plasma drug levels. The  $f_a$  for  
1415 paracetamol and theophylline was similar in the fasted and fed state, while  $t_{max}$  was shown to be slower  
1416 in the fed state. For both drugs, the slowest absorption rate among the age groups studied was the  
1417 newborns. For all three compounds,  $t_{max}$  values in the fed state were greater for all ages and showed a  
1418 trend towards an increase with advancing age; a slightly shorter  $t_{max}$  was demonstrated for liquid foods

1419 compared to semi-solid or solid meals. For ketoconazole, increasing age was related to a longer  $t_{\max}$   
1420 and lower  $f_a$ . Higher  $f_a$  values were observed in the fed state compared to the fasted state in all ages  
1421 and no difference was observed between solid and semi-solid foods [35].

1422

1423 A PBPK model was developed for montelukast (BCS class II/I; log P 8.79; pKa 2.7 and 5.8) in  
1424 Simcyp® for adults and paediatric patients. Montelukast is an amphiphilic drug with a high  
1425 lipophilicity [245]. The simulations were first built for adults after IV and oral administration of a  
1426 solution (no information about food state), and film-coated tablets in the fasted and fed state. Following  
1427 validation of the adult model, scaling was performed to simulate the administration in paediatric  
1428 populations after administration of oral granules in infants, and film-coated tablets in  
1429 children/adolescents, but no information was given about food state in paediatrics. The model building  
1430 included the experimental *in vitro* measurements of particle size and solubility in fasted simulated  
1431 gastric and intestinal fluid, and the dispersion type of the different formulations. Visually, the  
1432 absorption profiles were not well described for any of the paediatric age groups and mismatches of  
1433 observed vs. predicted pharmacokinetic profiles could be seen for infants after administration of  
1434 granules and children. Based on the model building process where parameterisation was based on sub-  
1435 models, and what information was known for each age-group, predictions of plasma concentration  
1436 profiles were regarded as reasonable, which in most cases appeared to be within two-fold of the  
1437 observed values (no ratios of observed/predicted were provided) [245].

1438

1439 An adult and paediatric disease PBPK model for oral administration of carvedilol, a BCS class II drug,  
1440 has been developed for patients with heart failure [246]. Carvedilol is a weak base with a pKa of 7.97  
1441 and log P of 4.19. The model was used to investigate the oral pharmacokinetics in infants, children,  
1442 adolescents (oral suspension) and adults (capsules and oral suspension). Changes in hepatic and renal  
1443 blood flows were incorporated in the model to simulate more accurately the physiology of chronic

1444 heart failure patients and the accuracy of the predicted (mean ratio observed vs. predicted)  
1445 pharmacokinetic parameters were improved in adults with chronic heart failure after oral  
1446 administration of a capsule or a suspension. The paediatric model for carvedilol was then constructed  
1447 with the pharmacokinetic parameters of carvedilol scaled to the paediatric patients by using the  
1448 paediatric module of Simcyp® (version 13.1). The predictions of the exposure of carvedilol in the  
1449 paediatric patients did not show as good correlations as for adults, except for patients above 17 years  
1450 of age. The limitations of the applied paediatric ADAM™ model was attributed to the lack of  
1451 information on anatomical and physiological changes, such as information on gastric and intestinal  
1452 pH, bile secretion, transporters, and gut fluid dynamics [246].

1453

1454 A PBPK model was developed to investigate the age dependency in oral absorption of the poorly  
1455 soluble lipophilic compound, carbamazepine (non-ionisable in the physiological pH range;  
1456 BCS class II; log P of 2) [243]. The model was developed to simulate administration of different  
1457 formulations in the separate age groups: administration of tablets children/adolescents, suspension  
1458 prepared from crushed tablets administered to newborns and infants, and administration of oral  
1459 solution, suspension and Tegretol® tablets to adults. After the development of the adult model for oral  
1460 administration of different formulations, doses and food status, adjustment of clearance (to take into  
1461 account patient characteristics and co-medication), the model was scaled to paediatric patients using  
1462 the default parameters of Gastroplus® (version 9.0) paediatric physiology adjusted module. *In vitro*  
1463 experiments were conducted to investigate biorelevant solubility and dissolution (µDISS Profiler®) in  
1464 adult and paediatric biorelevant media developed by Maharaj *et al.* [109]. The dissolution experimental  
1465 setups for adults and paediatrics were performed with Tegretol® tablets (or weighted fraction) added  
1466 to 20 mL of the pre-heated dissolution medium (37° C). Samples were stirred at 100 rpm and the  
1467 amount of dissolved drug was determined over 2 h. Dissolution experiments did not show any specific  
1468 media-mediated influence on carbamazepine dissolution, more than 80% dissolved in 20 min for

almost all tested media, and for all tested media in 30 min. Despite this, neither dissolution experiments, nor solubility in paediatric biorelevant media were used as parameters for building the models. Simulated dissolution and  $f_a$  profiles were compared, and as expected for a BCS class II compound, permeation was not found to be a rate-limiting step for absorption. Nevertheless, aqueous solubility and solubility in adult fasted and fed intestinal simulated fluids were used in the model building process. Interestingly, PSA revealed that solubility and dose were the most sensitive parameters for carbamazepine  $f_a$ . Particle radius, SITT, fraction of small intestinal fluid volume, SI length and radius, permeability and bile salt solubilisation ratio, showed an impact at higher doses of carbamazepine, but only a minor impact at low doses. The prandial state was also shown to be critical for absorption of higher doses, where increases in the extent of absorption were observed for simulations in the fed state. With the exception of one study in paediatrics, the pharmacokinetic data used for the validation of the simulations did not specify food status of the patients. Nevertheless, both fasted and fed states were investigated. Interestingly, accuracy of the simulations in newborns was improved when assuming fed state conditions when compared to fasted state simulations, which supports the common assumption that newborns and young infants are mainly in fed state due to the high frequency of feedings. Fraction absorbed of carbamazepine was shown to be dose-dependent, at high doses  $f_a$  was sensitive to intestinal length and transit time, while simulations for lower doses of carbamazepine resulted in complete absorption, for a wide range of simulated intestinal lengths, and transit times [243]. The authors highlighted that this dose-dependency of carbamazepine is an important factor to take into account, as paediatric patients can sometimes require higher doses per BW. Finally, it was shown that age could influence both rate and extent of oral absorption. Low carbamazepine doses (children dose 9 mg/kg and newborns 5 mg/kg) was associated with complete absorption within 4 to 6 h after drug administration, in all age-groups, however a slower rate of absorption was seen for newborns in comparison with the older age-groups, moreover, high

1493 carbamazepine doses (19 and 17 mg/kg respectively) were related to incomplete absorption in children  
1494 and newborns [243].

1495 The examples provided above (excluding Johnson *et al.*, 2018) demonstrate the general approach  
1496 followed when building the PBPK oral absorption models, as previously discussed in the Section 7.2.2.  
1497 In all of the examples, knowledge gaps concerning physiological and anatomical changes in  
1498 paediatrics, relevant to oral drug absorption, were pointed out as limiting factors of the models  
1499 predictions. Furthermore, in most examples, several details concerning study design and formulation  
1500 were lacking. The *in vitro* dissolution of the compounds was evaluated in three out of the eight  
1501 examples, with two of these compounds being highly soluble ones. Moreover the dissolution data were  
1502 not incorporated (as an input parameter) in the PBPK models, since no discrepancies in dissolution-  
1503 adjusted conditions for paediatrics were observed for the compounds/formulations investigated so far.  
1504 In future studies, it would be interesting to investigate the absorption of other classes of BCS  
1505 compounds, especially poorly soluble (BCS II and IV). The prandial state in paediatric simulations has  
1506 been explored in one of the examples, in most cases no information was provided for the simulations  
1507 performed, which might be a result of lack of quality in clinical data for paediatrics that is used for  
1508 validation of the predictions. Furthermore, the paediatric data sets used for the validation of the PBPK  
1509 models, applied a sub-division of the paediatric population according to the common sub-groups. The  
1510 majority of the examples were able to generate appropriate predictions for older paediatric populations  
1511 (*i.e.* children) while simulations in newborns and infants were more challenging. There is still a long  
1512 way to go in terms of paediatric PBPK absorption modeling, the examples of the models developed so  
1513 far, are useful to generate knowledge about oral drug absorption modeling.

#### 1514 1515 **7.2.4. Challenges in the paediatric oral drug absorption model**

1516 The determination of organ/tissue sizes (*e.g.* volume), tissue blood flow and tissue composition  
1517 estimations introduce a model uncertainty. Typically, due to lack of clinical data, relevant parameters,

1518 *e.g.* length and diameter of GI tract, are extrapolated from adult data, based on BSA function for the  
1519 paediatric populations and assume a proportional growth of the organs [125; 242]. The determination  
1520 of GE rates and luminal composition (including the pH) in newborns and infants is challenging, due  
1521 to frequent meal administration, therefore, food-related physiological responses in paediatrics is  
1522 difficult to define [236]. Although biorelevant media for newborns and infants have recently been  
1523 proposed [109], drug solubility estimations under conditions reflecting the luminal composition are  
1524 challenging due to the limited information in the various paediatric populations and the unclear fasted  
1525 vs. fed state, especially in newborns and infants. Intestinal permeability in paediatrics has been the  
1526 subject of a number of studies, nevertheless, no precise values or methods have been reported; therefore  
1527 the intestinal permeability for paediatric virtual populations is usually adjusted from the permeability  
1528 parameter for adults (Caco-2 permeability or *in situ* permeability studies) [137; 169]. In the case of  
1529 transporter involvement in the uptake or excretion of the drug, in addition to the parameters used for  
1530 the adult model, the transporter availability and functionality in the paediatrics need to be confirmed  
1531 and adjusted accordingly. Alternative influx and efflux routes only relevant in paediatrics populations  
1532 and their contribution to the absorption process should be further investigated for the age range of  
1533 interest, as shown in the process of building a PBPK model for valganciclovir, a substrate of the  
1534 transporter PEPT1 [239]. In addition to the accuracy of the parameters used to describe paediatric  
1535 physiology, a reasonable parameter variability value needs to be introduced in order to ensure that the  
1536 generated predictions would match real-life heterogeneity among the paediatric population [227]. This  
1537 can be challenging due to the nature of available paediatric data. For some of the presented examples  
1538 of paediatric models in Section 7.2.3., possible formulation influence on the absorption processes was  
1539 taken into consideration, although solubility and dissolution tests were not always performed, thus  
1540 outlining further aspects that should be the subject of future evaluation. The established model requires  
1541 validation towards clinical data acquired in the target population. Due to the lack of published high-  
1542 quality clinical data in specific paediatric populations, confirmation of the developed paediatric PBPK

models has not always been possible. Finally, great importance has been assigned to the comparison of the model-predicted outcomes to clinical paediatric *in vivo* data by the EMA in the “Guidelines on the qualification and reporting of PBPK modeling and simulation” and a “Reflection paper on the use of extrapolation in the development of medicines for paediatrics” [216; 229].

1547

## 1548 **8. Conclusions**

Despite ongoing advances in the paediatric biopharmaceutics field, detailed knowledge on physiological differences among paediatric subpopulations and between adults is still lacking. While there have been many study outcomes reported on physiological parameters such as gastric fasted pH levels, GE times, and hepatic drug metabolism, other areas, such as GI fluid composition and SITT, intestinal metabolism, drug transporters and permeability, have been investigated to a very limited extent. Inconsistencies amongst meal types and frequencies throughout paediatric studies result in a complex definition of the paediatric prandial state, which further complicates the prediction of drug and formulation performance. Specific guidance by regulatory agencies on bioequivalence studies and age-specific definitions of fasted and fed state conditions for paediatrics is lacking, which make the development of solid evidence-based pBCS criteria quite challenging. Common background knowledge is needed for the development and validation of age-specific *in vitro* and *in silico* biopharmaceutics tools. A combination of both methods, *in vitro*/PBPK, can be utilised to obtain information that is able to compensate for the uncertainties of the single tool on its own.

1562

## 1563 **Acknowledgement**

This work has received funding from Horizon 2020 Marie Skłodowska-Curie Innovative Training Networks programme under grant agreement No. 674909

1566

## References

1. Preis M, Breitreutz J. Pediatric Drug Development and Dosage Form Design. *AAPS PharmSciTech* 2017; 18(2): 239-40.
2. European Medicines Agency (EMA). 10-year Report to the European Commission: General report on the experience acquired as a result of the application of the Paediatric Regulation. *EMA/231225/2015*. 2017.
3. Salunke S et al. European Paediatric Formulation Initiative (EuPFI) — Formulating Ideas for Better Medicines for Children. *AAPS PharmSciTech* 2017; 18(2): 257-62.
4. Barrett JS et al. Physiologically based pharmacokinetic (PBPK) modeling in children. *Clin Pharmacol Ther* 2012; 92(1): 40-9.
5. Food and Drug Administration (FDA). General Clinical Pharmacology Considerations for Pediatric Studies for Drugs and Biological Products Guidance for Industry (draft guidance). 2014.
6. World Health Organization (WHO). Position Paper: Paediatric Age Categories to be Used in Differentiating Between Listing on a Model Essential Medicines List for Children. World Health Organization (WHO), 2007.
7. Maharaj AR, Edginton AN. Physiologically Based Pharmacokinetic Modeling and Simulation in Pediatric Drug Development. *CPT Pharmacometrics Syst Pharmacol* 2014; 3(11):1-13.
8. Centers for Disease Control and Prevention (CDC). CDC Growth Charts. Atlanta, GA: Centers for Disease Control and Prevention, Department of Health and Human Services, 2000.
9. Verbraecken J et al. Body surface area in normal-weight, overweight, and obese adults. A comparison study. *Metabolism* 2006; 55(4): 515-24.
10. European Medicines Agency (EMA). Reflection Paper: Formulations of choice for the paediatric population *EMA/CHMP/PEG/194810/2005*. 2006.
11. European Medicines Agency (EMA). ICH Topic E 11 Clinical Investigation of Medicinal Products in the Paediatric Population. *PMP/ICH/2711/99*. 2001.
12. DiMaggio DM et al. Updates in Infant Nutrition. *Pediatrics in review* 2017; 38(10): 449-62.
13. Noimark L, Cox HE. Nutritional problems related to food allergy in childhood. *Pediatr Allergy Immunol* 2008; 19(2): 188-95.
14. Dewey KG, Brown KH. Update on technical issues concerning complementary feeding of young children in developing countries and implications for intervention programs. *Food Nutr Bull* 2003; 24(1): 5-28.
15. Schwartz C et al. Development of healthy eating habits early in life. Review of recent evidence and selected guidelines. *Appetite* 2011; 57(3): 796-807.
16. Gidding S et al. Dietary recommendations for children and adolescents: a guide for practitioners. *Pediatrics* 2006; 117(2): 544-559.
17. Dewey K. Guiding principles for complementary feeding of the breastfed child. PAN American Health organization, World Health Organization. Washington D.C. 2002.
18. European Food Safety Authority (EFSA). Scientific Opinion on nutrient requirements and dietary intakes of infants and young children in the European Union. *EFSA J* 2013; 11(10): 3408-511.
19. Butte N et al. The Start Healthy Feeding Guidelines for Infants and Toddlers. *J Am Diet Assoc*. 2004; 04(3): 442-54.
20. Harrison M et al. A qualitative systematic review of maternal infant feeding practices in transitioning from milk feeds to family foods. *Matern Child Nutr* 2016; 13(2): e12360
21. Schiess S et al. Introduction of complementary feeding in 5 European countries. *J Pediatr Gastroenterol Nutr* 2010; 50(1): 92-8
22. Anderson AS et al. Rattling the plate-reasons and rationales for early weaning. *Health Educ Res* 2001; 16(4): 471-9.
23. Heinig MJ et al. Barriers to compliance with infant-feeding recommendations among low-income women. *J Hum Lact* 2006; 1: 27-38.

1615 24. Horodyski M et al. Low-income mothers' decisions regarding when and why to introduce solid foods to  
1616 their infants: influencing factors. *J Community Health Nurs* 2007; 24(2): 101-18.

1617 25. Butte NF. Energy requirements of infants. *Public Health Nutr* 2005; 8(7A): 935-67.

1618 26. European Food Safety Authority (EFSA). Scientific Opinion on Dietary Reference Values for energy.  
1619 *EFSA J* 2013; 11(1): 3005-115.

1620 27. Henry C. Basal metabolic rate studies in humans: measurement and development of new equations. *Public*  
1621 *Health Nutr* 2005; 8(7a): 1133-52.

1622 28. U.S. Department of Agriculture, U.S. Department of Health and Human Services. Dietary Guidelines for  
1623 Americans. Washington, DC: U.S. Government Wrinting Office, 2010.

1624 29. U.S. Department of Agriculture. Infant Nutrition and Feeding: A guide for use in the WIC and CSF  
1625 programs. 2009: 51-96.

1626 30. World Health Organization (WHO). Management of the child with a serious infection or severe  
1627 malnutrition : guidelines for care at the first-referral level in developing countries.  
1628 *WHO/FCH/CAH/001*. Geneva, Switzerland: WHO, 2000.

1629 31. World Health Organization (WHO). Caring for newborns and children in the community: Caring for the  
1630 newborn at home. Geneva, Switzerland: WHO, 2015.

1631 32. Dewey KG et al. Risk factors for suboptimal infant breastfeeding behavior, delayed onset of lactation, and  
1632 excess neonatal weight loss. *Pediatrics* 2003; 112(3 Pt 1): 607-19.

1633 33. Bergman NJ. Neonatal stomach volume and physiology suggest feeding at 1-h intervals. *Acta paediatrica*  
1634 2013; 102(8): 773-7.

1635 34. European Food Safety Authority (EFSA). Opinion on complementary feeding of infants. *EFSA J* 2009;  
1636 7(12): 1423-61.

1637 35. Johnson TN et al. Development and application of a physiologically-based model of paediatric oral drug  
1638 absorption. *Eur J Pharm Sci*. 2018; 115:57-67.

1639 36. European Food Safety Authority (EFSA). Scientific Opinion on Dietary Reference Values for water.  
1640 *EFSA Journal* 2010; 3: 1459-1461.

1641 37. World Health Organization (WHO). Guiding principles for feeding non-breastfed children 6-24 months of  
1642 age. Geneva, Switzerland: WHO, 2005.

1643 38. Cattaneo A et al. Infant and young child feeding: standard recommendations for the European Union In:  
1644 European Network for Public Health Nutrition: Networking, M., Training, I. a. eds., 2006: 540-6.

1645 39. Sachdev HP et al. Water supplementation in exclusively breastfed infants during summer in the tropics.  
1646 *Lancet* 1991; 337(8747): 929-33.

1647 40. Heyman M, Abrams S. Fruit Juice in Infants, Children, and Adolescents: Current Recommendations.  
1648 *Pediatrics* 2017. 139(6): e20170967.

1649 41. Abrams SA, Daniels SR. Fruit Juice and Child Health. *Pediatrics* 2017; 139(4): e20170041.

1650 42. Bellisle F et al. A study of fluid intake from beverages in a sample of healthy French children, adolescents  
1651 and adults. *Eur J Clin Nutr* 2010; 64(4): 350-55.

1652 43. Meyers RS. Pediatric Fluid and Electrolyte Therapy. *J Pediatr Pharmacol Ther* 2009; 14(4): 204-11.

1653 44. Gidrewicz DA, Fenton TR. A systematic review and meta-analysis of the nutrient content of preterm and  
1654 term breast milk. *BMC pediatrics* 2014;14(1): 216.

1655 45. European Food Safety Authority (EFSA). Scientific Opinion on the essential composition of infant and  
1656 follow-on formulae. *EFSA Journal* 2014; 7: 3760-864.

1657 46. Keikha M et al. Macro- and Micronutrients of Human Milk Composition: Are They Related to Maternal  
1658 Diet? A Comprehensive Systematic Review. *Breastfeed Med* 2017; 12(9): 517-27.

1659 47. Michaelsen KF et al. Variation in macronutrients in human bank milk: influencing factors and  
1660 implications for human milk banking. *J Pediatr Gastroenterol Nutr* 1990; 11(2): 229-39.

1661 48. Kamstrup D et al. In Vitro Model Simulating Gastro-Intestinal Digestion in the Pediatric Population  
1662 (Neonates and Young Infants). *AAPS Pharm Sci Tech* 2017; 18(2): 317-329.

- 1663 49. Staelens S et al. Gastric emptying in healthy newborns fed an intact protein formula, a partially and an  
1664 extensively hydrolysed formula. *Clin nutr* 2008; 27(2): 264-8.
- 1665 50. Michaelsen K. Feeding and nutrition of infants and young children: guidelines for the WHO European  
1666 region, with emphasis on the former Soviet countries. WHO Regional Publications, European Series  
1667 No. 87. 2000.
- 1668 51. European Parliament. Regulation (EU) No 609/2013 of the European Parliament and of the Council on  
1669 Food Intended for Infants and Young Children, Food for Special Medical Purposes, and Total Diet  
1670 Replacement for Weight Control. Official Journal of the European Union 2012, 2012: 35-56.
- 1671 52. European Medicines Agency (EMA). Guideline on the investigation of drug interactions.  
1672 *EMA/CHMP/458101/2016*, 2012
- 1673 53. Food and Drug Administration (FDA). Guidance for Industry Food-Effect Bioavailability and Fed  
1674 Bioequivalence Studies. 2002.
- 1675 54. U.S. Department of Health and Human Services, National Institute of Health. *Keep the Beat? Recipes:  
1676 Deliciously Healthy Family Meals*, NIH Publication No. 10-7531, 2010.
- 1677 55. Kersten E et al. Physicochemical characterisation of fluids and soft foods frequently mixed with oral drug  
1678 formulations prior to administration to children. *Die Pharmazie* 2016; 71(3): 122-7.
- 1679 56. Martir J et al. Characterisation of the physicochemical properties of food and drinks used for the co-  
1680 administration of drugs in the paediatric populations. *APPS Published abstracts*. Available from  
1681 <http://abstracts.aaps.org/published/>, AAPS annual meeting, San Diego, 2017.
- 1682 57. Neville MC, Jensen RG. E - The Physical Properties of Human and Bovine Milks. *Handbook of Milk* 57.  
1683 Neville MC, Jensen RG. E - The Physical Properties of Human and Bovine Milks. *Handbook of Milk*  
1684 *Composition*. San Diego: Academic Press, 1995: 81-85.
- 1685 58. Klein S et al. Media to simulate the postprandial stomach I. Matching the physicochemical characteristics  
1686 of standard breakfasts. *J Pharm Pharmacol* 2004; 56(5): 605-10.
- 1687 59. Manrique YJ et al. Crushed tablets: does the administration of food vehicles and thickened fluids to aid  
1688 medication swallowing alter drug release? *J Pharm Pharm Sci* 2014; 17(2): 207-19.
- 1689 60. Jong GT. Pediatric Development: Physiology. Enzymes, Drug Metabolism, Pharmacokinetics and  
1690 Pharmacodynamics. In: Bar-Shalom, D., Rose, K. eds. *Pediatric Formulations: A Roadmap*. New  
1691 York, NY: Springer New York, 2014: 9-23.
- 1692 61. Lu H, Rosenbaum S. Developmental Pharmacokinetics in Pediatric Populations. *J Pediatr Pharmacol*  
1693 *Ther* 2014; 19(4): 262-76.
- 1694 62. Ku LC, Smith PB. Dosing in neonates: special considerations in physiology and trial design. *Pediatr Res*  
1695 2015; 77(0): 2-9.
- 1696 63. Nicolas JM et al. Oral drug absorption in pediatrics: the intestinal wall, its developmental changes and  
1697 current tools for predictions. *Biopharm Drug Dispos* 2016; 38(3): 209-30.
- 1698 64. Batchelor HK. Paediatric Development: Gastrointestinal. In: Bar-Shalom, D., Rose, K. eds. *Pediatric*  
1699 *Formulations: A Roadmap*. New York, NY: Springer New York, 2014: 43-54.
- 1700 65. Crawford M et al. Effects of duration of fasting on gastric fluid pH and volume in healthy children. *Anesth*  
1701 *Analg* 1990; 71(4): 400-3.
- 1702 66. Maekawa N et al. Effects of 2-, 4- and 12-hour fasting intervals on preoperative gastric fluid pH and  
1703 volume, and plasma glucose and lipid homeostasis in children. *Acta Anaesthesiol Scand* 1993; 37(8):  
1704 783-7.
- 1705 67. Schwartz DA et al. Gastric contents in children presenting for upper endoscopy. *Anesth Analg* 1998;  
1706 87(4): 757-60.
- 1707 68. Nicolson SC et al. Shortened preanesthetic fasting interval in pediatric cardiac surgical patients. *Anesth*  
1708 *Analg* 1992; 74(5): 694-697.
- 1709 69. Manchikanti L et al. Assessment of age-related acid aspiration risk factors in pediatric, adult, and geriatric  
1710 patients. *Anesth Analg* 1985; 64(1): 11-17.

1711 70. Meakin G et al. Effects of fasting and oral premedication on the pH and volume of gastric aspirate in  
1712 children. *Br J Anaesth* 1987; 59(6): 678-82.

1713 71. Sandhar BK et al. Effect of oral liquids and ranitidine on gastric fluid volume and pH in children  
1714 undergoing outpatient surgery. *Anesthesiology* 1989; 71(3): 327-330.

1715 72. Schmidt AR et al. Gastric pH and residual volume after 1 and 2 h fasting time for clear fluids in  
1716 children. *Br J Anaesth* 2015; 114(3): 477-82.

1717 73. Schreiner MS et al. Ingestion of liquids compared with preoperative fasting in pediatric outpatients.  
1718 *Anesthesiology* 1990; 72(4): 593-7.

1719 74. Splinter WM et al. Clear fluids three hours before surgery do not affect the gastric fluid contents of  
1720 children. *Can J Anaesth* 1990; 37(5): 498-501.

1721 75. Splinter WM et al. The effect of preoperative apple juice on gastric contents, thirst, and hunger in children.  
1722 *Can J Anaesth* 1989; 36(1): 55-8.

1723 76. Splinter WM et al. Large volumes of apple juice preoperatively do not affect gastric pH and volume in  
1724 children. *Can J Anaesth* 1990; 37(1): 36-9.

1725 77. Splinter W, Schaefer J. Ingestion of clear fluids is safe for adolescents up to 3 h before anaesthesia. *Br J*  
1726 *Anaesth* 1991; 66(1): 48-52.

1727 78. Kaye JL. Review of paediatric gastrointestinal physiology data relevant to oral drug delivery. *Int J Clin*  
1728 *Pharm* 2011; 33(1): 20-4

1729 79. Roman C et al. Quantitative and qualitative study of gastric lipolysis in premature infants: do MCT-  
1730 enriched infant formulas improve fat digestion? *Pediatr Res* 2007; 61(1): 83-8.

1731 80. Cavell B. Postprandial gastric acid secretion in infants. *Acta Paediatr Scand* 1983; 72(6): 857-60.

1732 81. Siegel M et al. Gastric emptying in prematures of isocaloric feedings with differing osmolalities. *Pediatr*  
1733 *Res* 1982; 16(2): 141-7.

1734 82. Armand M et al. Effect of Human Milk or Formula on Gastric Function and Fat Digestion in the  
1735 Premature Infant. *Pediatr Res* 1996; 40(3): 429-37.

1736 83. Batchelor HK et al. Application of in vitro biopharmaceutical methods in development of immediate  
1737 release oral dosage forms intended for paediatric patients. *Eur J Pharm Sci* 2013; 85(3), Part B: 833-  
1738 42.

1739 84. Edginton AN, Fotaki N. Oral drug absorption in pediatric populations. In: Informa Healthcare USA, I. ed.  
1740 *Oral Drug Absorption: Prediction and Assessment (Dressman JB and Reppas C)*. New York, 2010:  
1741 108-26.

1742 85. Yu G et al. Similarities and Differences in Gastrointestinal Physiology Between Neonates and Adults: a  
1743 Physiologically Based Pharmacokinetic Modeling Perspective. *AAPS J* 2014; 16(6): 1162-66.

1744 86. De Zwart LL et al. Pharmacokinetics of Ingested Xenobiotics in Children: a Comparison with Adults.  
1745 RIVM Report 623860011, 2002

1746 87. Kelly EJ et al. The effect of intravenous ranitidine on the intragastric pH of preterm infants receiving  
1747 dexamethasone. *Arch Dis Child* 1993; 69(1 Spec No): 37-9.

1748 88. Kelly EJ et al. Gastric acid secretion in preterm infants. *Early human development* 1993; 35(3): 215-20.

1749 89. Omari TI, Davidson GP. Multipoint measurement of intragastric pH in healthy preterm infants. *Arch Dis*  
1750 *Child Fetal Neonatal Ed* 2003; 88(6): F517-20.

1751 90. Miller B et al. Gastric residual volume in infants and children following a 3-hour fast. *J Clin Anesth* 1990;  
1752 2(5): 301-305.

1753 91. Wolman IJ. Gastric phase of milk digestion in childhood: A study of the fasting secretions and of the  
1754 physiologic responses to "hard curd" (pasteurized) and "soft curd" (homogenized) milks. *Am J Dis*  
1755 *Child* 1946; 71(4): 394-422.

1756 92. Gharpure V et al. Indicators of postpyloric feeding tube placement in children. *Crit Care Med* 2000; 28(8):  
1757 2962-6.

- 1758 93. Metheny NA et al. Clinical Research: Indicators of Feeding-Tube Placement in Neonates. *Nutr Clin Pract*  
1759 1999; 14(6):307-14.
- 1760 94. Fallingborg J et al. Measurement of Gastrointestinal pH and Regional Transit Times in Normal Children. *J*  
1761 *Pediatr Gastroenterol Nutr* 1990; 11(2): 211-4.
- 1762 95. Westhus N. Methods to test feeding tube placement in children. *MCN Am J Matern Child Nurs* 2004;  
1763 29(5): 282-7.
- 1764 96. Di Maio S, Carrier RL. Gastrointestinal contents in fasted state and post-lipid ingestion: in vivo  
1765 measurements and in vitro models for studying oral drug delivery. *J Control Release* 2011; 151(2):  
1766 110-22.
- 1767 97. Kalantzi L et al. Characterization of the human upper gastrointestinal contents under conditions simulating  
1768 bioavailability/bioequivalence studies. *Pharm Res* 2006; 23(1): 165-76.
- 1769 98. Dressman JB et al. Upper gastrointestinal (GI) pH in young, healthy men and women. *Pharm Res* 7(7):  
1770 756-61.
- 1771 99. Sondheimer JM et al. Continuous gastric pH measurement in young and older healthy preterm infants  
1772 receiving formula and clear liquid feedings. *J Pediatr Gastroenterol Nutr* 1985; 4(3): 352-5.
- 1773 100. Litman RS et al. Gastric volume and pH in infants fed clear liquids and breast milk prior to surgery.  
1774 *Anesth Analg* 1994; 79(3): 482-5.
- 1775 101. Fuchs A, Dressman JB. Composition and physicochemical properties of fasted-state human duodenal and  
1776 jejunal fluid: a critical evaluation of the available data. *J Pharm Sci* 2014; 103(11): 3398-411.
- 1777 102. Boehm G et al. Postnatal adaptation of lipase- and trypsin-activities in duodenal juice of premature  
1778 infants appropriate for gestational age. *Biomed Biochimic Acta* 1990; 49(5): 369-73.
- 1779 103. Fredrikzon B, Olivecrona T. Decrease of lipase and esterase activities in intestinal contents of newborn  
1780 infants during test meals. *Pediatr Res* 1978; 12(5): 631-4.
- 1781 104. Rune SJ, Viskum K. Duodenal pH values in normal controls and in patients with duodenal ulcer. *Gut*  
1782 1969; 10(7): 569-71.
- 1783 105. Robinson PJ et al. Duodenal pH in cystic fibrosis and its relationship to fat malabsorption. *Dig Dis Sci*  
1784 1990; 35(10): 1299-304.
- 1785 106. Mooij MG et al. Ontogeny of oral drug absorption processes in children. *Expert Opin Drug Metab*  
1786 *Toxicol* 2012; 8(10): 1293-303.
- 1787 107. Mason S. Some Aspects of Gastric Function in the Newborn. *Arch Dis Child* 1962; 37(194): 387–391.
- 1788 108. De Koning BAE et al. Developmental Changes in the Processes Governing Oral Drug Absorption. In:  
1789 Bar-Shalom, D., Rose, K. eds. *Pediatric Formulations: A Roadmap*. New York, NY: Springer New  
1790 York, 2014: 25-42.
- 1791 109. Maharaj AR et al. Assessment of Age-Related Changes in Pediatric Gastrointestinal Solubility. *Pharm*  
1792 *Res* 2016; 33(1): 52-71.
- 1793 110. Barbero GJ et al. Investigations on the bacterial flora, pH, and sugar content in the intestinal tract of  
1794 infants. *J Pediatr* 1952; 40(2): 152-63.
- 1795 111. Abrahamse E et al. Development of the Digestive System— Experimental Challenges and Approaches of  
1796 Infant Lipid Digestion. *Food Dig* 2012; 3(1-3): 63-77.
- 1797 112. Bourlieu C et al. Specificity of infant digestive conditions: some clues for developing relevant in vitro  
1798 models. *Crit Rev Food Sci Nutr* 2014; 54(11): 1427-57.
- 1799 113. Jarvenpaa AL et al. Feeding the low-birth-weight infant. III. Diet influences bile acid metabolism.  
1800 *Pediatrics* 1983; 72(5): 677-83.
- 1801 114. Signer E et al. Role of bile salts in fat malabsorption of premature infants. *Arch Dis Child* 1974; 49(3):  
1802 174-80.
- 1803 115. Harries JT et al. Intestinal bile salts in cystic fibrosis: studies in the patient and experimental animal.  
1804 *Arch Dis Child* 1979; 54(1): 19-24.
- 1805 116. Glasgow JF et al. A comprehensive study of duodenal bile salts in newborn infants and their relationship  
1806 to fat absorption. *Ir J Med Sci* 1980; 149(9):346-56.

1807 117. Billeaud C et al. Gastric emptying in infants with or without gastro-oesophageal reflux according to the  
1808 type of milk. *Eur J Clin Nutr* 1990; 44(8): 577-83.

1809 118. Thatrimontrichai A, Janjindamai W. Postprandial osmolality of gastric contents in very low-birth-weight  
1810 infants fed expressed breast milk with additives. *Southeast Asian J Trop Med Public Health* 2009;  
1811 40(5): 1080-6.

1812 119. Clarysse S et al. Postprandial evolution in composition and characteristics of human duodenal fluids in  
1813 different nutritional states. *J Pharm Sci* 2009; 98(3): 1177-92.

1814 120. Bowles A et al. Specific aspects of gastro-intestinal transit in children for drug delivery design. *Int J*  
1815 *Pharm* 2010 16;395(1-2):37-43.

1816 121. Bonner JJ et al. Does age affect gastric emptying time? A model-based meta-analysis of data from  
1817 premature neonates through to adults. *Biopharm Drug Dispos* 2015; 36(4): 245-57

1818 122. Mudie DM et al. Physiological Parameters for Oral Delivery and In vitro Testing. *Mol Pharm*  
1819 2010; 7(5): 1388-405.

1820 123. Lange A et al. Gastric emptying patterns of a liquid meal in newborn infants measured by epigastric  
1821 impedance. *Neurogastroenterol Motil* 1997; 9(2): 55-62.

1822 124. Hauser B et al. Gastric Emptying of Liquids in Children. *J Pediatr Gastroenterol Nutr* 2016; 62(3): 403-  
1823 8.

1824 125. Cristofaletti R et al. Exploratory Investigation of the Limiting Steps of Oral Absorption of Fluconazole  
1825 and Ketoconazole in Children Using an In Silico Pediatric Absorption Model. *J Pharm Sci* 2016;  
1826 105(9): 2794-803.

1827 126. Van Den Driessche M, Veereman-Wauters G. Gastric emptying in infants and children. *Acta*  
1828 *Gastroenterol Belg* 2003; 66(4): 274-82.

1829 127. Cavell B. Gastric emptying in infants fed human milk or infant formula. *Acta Paediatr Scand* 1981;  
1830 70(5):639-41.

1831 128. Ewer AK et al. Gastric emptying in preterm infants. *Arch Dis Child Fetal Neonatal Ed.* 1994; 71(1):F24-  
1832 7.

1833 129. Meyer R et al. Systematic review of the impact of feed protein type and degree of hydrolysis on gastric  
1834 emptying in children. *BMC gastroenterology* 2015; 137.

1835 130. Hauser B et al. Gastric emptying of solids in children: reference values for the (13) C-octanoic acid  
1836 breath test. *Neurogastroenterol Motil* 2016; 28(10): 1480-7.

1837 131. Dressman JB et al. Dissolution testing as a prognostic tool for oral drug absorption: immediate release  
1838 dosage forms. *Pharm Res* 1998; 15(1): 11-22.

1839 132. Malik R et al. Assessment of gastric emptying in children: Establishment of control values utilizing a  
1840 standardized vegetarian meal. *J Gastroenterol Hepatol* 2016; 31(2): 319-25.

1841 133. Hardoff R et al. Gastric emptying time and gastric motility in patients with Parkinson's disease. *Mov*  
1842 *Disord* 2001; 16(6): 1041-7

1843 134. Maharaj AR, Edginton AN. Examining Small Intestinal Transit Time as a Function of Age: Is There  
1844 Evidence to Support Age-Dependent Differences among Children? *Drug Metab Dispos* 2016; 44(7):  
1845 1080-9.

1846 135. The International Commission on Radiological Protection (ICRP). Basic anatomical and physiological  
1847 data for use in radiological protection: reference values: ICRP Publication 89. *Annals of the ICRP*  
1848 2002; 32(3-4): 1-277.

1849 136. Weaver L et al. Small intestinal length: a factor essential for gut adaptation. *Gut* 1991; 32(11): 1321-23.

1850 137. Batchelor HK, Marriott JF. Paediatric pharmacokinetics: key considerations. *Br J Clin Pharmacol* 2015;  
1851 79(3): 395-404.

1852 138. Bai JPF et al. Literature Review of Gastrointestinal Physiology in the Elderly, in Pediatric Patients, and  
1853 in Patients with Gastrointestinal Diseases. *J Pharm Sci* 2016; 105(2): 476-83.

1854 139. Cummins AG et al. Crypt fission peaks early during infancy and crypt hyperplasia broadly peaks during  
1855 infancy and childhood in the small intestine of humans. *J Pediatr Gastroenterol Nutr* 2008; 47(2):  
1856 153-7.

1857 140. Cummins AG, Thompson FM. Effect of breast milk and weaning on epithelial growth of the small  
1858 intestine in humans. *Gut* 2002; 51(5): 748-541.

1859 141. Penna FJ et al. Jejunal mucosal morphometry in children with and without gut symptoms and in normal  
1860 adults. *J Clin Pathol* 1981; 34(4): 386-92.

1861 142. Batchelor HK et al. Paediatric oral biopharmaceutics: key considerations and current challenges. *Adv*  
1862 *Drug Deliv Rev* 2014;73: 102-26.

1863 143. Riezzo G et al. Maturation of gastric electrical activity, gastric emptying and intestinal permeability in  
1864 preterm newborns during the first month of life. *Ital J Pediatr* 2009; 35(1)-6.

1865 144. Van Elburg RM et al. Intestinal permeability in relation to birth weight and gestational and postnatal age.  
1866 *Arch Dis Child Fetal Neonatal Ed* 2003; 88(1): F52-5.

1867 145. Kerr CA et al. Early life events influence whole-of-life metabolic health via gut microflora and gut  
1868 permeability. *Crit Rev Microbiol* 2015; 41(3): 326-40.

1869 146. Batchelor HK. Paediatric biopharmaceutics classification system: Current status and future decisions. *Int*  
1870 *J Pharm* 2014; 469(2): 251-3.

1871 147. Batchelor HK et al. Towards the development of a paediatric biopharmaceutics classification system:  
1872 Results of a survey of experts. *Int J Pharm* 2016; 469(2): 1151-7.

1873 148. Colome G et al. Intestinal permeability in different feedings in infancy. *Acta paediatrica* 2007; 96(1):  
1874 69-72.

1875 149. Akram G, Mullen AB. Paediatric nurses' knowledge and practice of mixing medication into foodstuff. *Int*  
1876 *J Pharm Pract* 2012; 20(3): 191-8.

1877 150. Stratiki Z et al. The effect of a bifidobacter supplemented bovine milk on intestinal permeability of  
1878 preterm infants. *Early Hum Dev* 2007; 83(9): 575-9.

1879 151. Mooij MG et al. Human Intestinal PEPT1 Transporter Expression and Localization in Preterm and Term  
1880 Infants. *Drug Metab Dispos* 2016; 44(7): 1014-9.

1881 152. Mooij MG et al. Ontogeny of human hepatic and intestinal transporter gene expression during childhood:  
1882 age matters. *Drug Metab Dispos* 2014; 42(8): 1268-74.

1883 153. Prasad B et al. The Promises of Quantitative Proteomics in Precision Medicine. *J Pharm Sci* 2017;  
1884 106(3): 738-44.

1885 154. Brouwer KL et al. Human Ontogeny of Drug Transporters: Review and Recommendations of the  
1886 Pediatric Transporter Working Group. *Clin Pharmacol Ther* 2015; 98(3): 266-87.

1887 155. Elmorsi Y et al. Ontogeny of Hepatic Drug Transporters and Relevance to Drugs Used in Pediatrics.  
1888 *Drug Metab Dispos* 2016; 44(7): 992-8.

1889 156. Abdel-Rahman SM et al. Summary of the National Institute of Child Health and Human Development–  
1890 Best Pharmaceuticals for Children Act Pediatric Formulation Initiatives Workshop–Pediatric  
1891 Biopharmaceutics Classification System Working Group. *Clin Ther* 2012; 34(11): S11-24.

1892 157. Quigley EMM. Microflora Modulation of Motility. *Neurogastroenterol Motil* 2011; 17(2): 140-7.

1893 158. Merchant HA et al. Age-mediated changes in the gastrointestinal tract. *Int J Pharm* 2016; 512(2): 382-95.

1894 159. Sadler NC et al. Hepatic Cytochrome P450 Activity, Abundance, and Expression Throughout Human  
1895 Development. *Drug Metab Dispos* 2016; 44(7): 984-91.

1896 160. Amidon G et al. A theoretical basis for a biopharmaceutic drug classification: the correlation of in vitro  
1897 drug product dissolution and in vivo bioavailability. *Pharm Res* 1995; 3: 413-20.

1898 161. Lennernäs H, Abrahamsson B. The use of biopharmaceutic classification of drugs in drug discovery and  
1899 development: current status and future extension. *J Pharm Pharmacol* 2005; 57(3): 273-85.

1900 162. Ku M. Use of the Biopharmaceutical Classification System in Early Drug Development. *AAPS J* 2008;  
1901 10(1): 208-12.

1902 163. Shawahna R. Pediatric Biopharmaceutical Classification System: Using Age-Appropriate Initial Gastric  
1903 Volume. *AAPS J* 2016; 18(3): 728-36.

1904 164. Gandhi SV et al. Considerations for a Pediatric Biopharmaceutics Classification System (BCS):  
1905 Application to Five Drugs. *AAPS PharmSciTech* 2014; 15(3): 601-11.

1906 165. Mahmood I. Dosing in children: a critical review of the pharmacokinetic allometric scaling and  
1907 modelling approaches in paediatric drug development and clinical settings. *Clin Pharmacokinet* 2014;  
1908 53(4): 327-46.

1909 166. Hens B et al. Evaluation of real-life dosing of oral medicines with respect to fluid and food intake in a  
1910 Dutch-speaking population. *J Clin Pharm Ther* 2017; 42(4): 467-74.

1911 167. European Medicines Agency (EMA). Guideline on pharmaceutical development of medicines for  
1912 paediatric use. *EMA/CHMP/QWP/805880/2012, Rev 2*. 2013.

1913 168. Martir J et al. Recommended strategies for the oral administration of paediatric medicines with food and  
1914 drinks in the context of their biopharmaceutical properties: a review. *J Pharm Pharmacol* 2016; 69(4):  
1915 384-97

1916 169. Elder DP et al. Medicines for Pediatric Patients—Biopharmaceutical, Developmental, and Regulatory  
1917 Considerations. *J Pharm Sci* 2017; 106(4): 950-60.

1918 170. Boateng J. Drug Delivery Innovations to Address Global Health Challenges for Pediatric and Geriatric  
1919 Populations (Through Improvements in Patient Compliance). *J Pharm Sci* 2017; 106(11): 3188-98.

1920 171. Purohit V. Biopharmaceutic Planning in Pediatric Drug Development. *AAPS J* 2012; 14(3): 519-22.

1921 172. Quijano Ruiz B et al. Pediatric formulation issues identified in Paediatric Investigation Plans. *Expert Rev*  
1922 *Clin Pharmacol* 2014; 7(1): 25-30.

1923 173. Mistry P et al. Evidence of acceptability of oral paediatric medicines: a review. *J Pharm Pharmacol*  
1924 2017; 69(4): 361-76.

1925 174. European Medicines Agency (EMA). Guideline on the role of pharmacokinetics in the development of  
1926 medicinal products in the paediatric population. *EMA/CHMP/EWP/147013/2004*, 2008

1927 175. Food and Drug Administration (FDA). Guidance for Industry General Considerations for Pediatric  
1928 Pharmacokinetic Studies for Drugs and Biological Products. 1998.

1929 176. Batchelor H. Influence of Food on Paediatric Gastrointestinal Drug Absorption Following Oral  
1930 Administration: A Review. *Children* 2015; 2(2): 244-71.

1931 177. Lancaster DL et al. 6-Thioguanine in children with acute lymphoblastic leukaemia: influence of food on  
1932 parent drug pharmacokinetics and 6-thioguanine nucleotide concentrations. *Br J Clin Pharmacol*  
1933 2001; 51(6): 531-9.

1934 178. Borrmann S et al. The effect of food consumption on lumefantrine bioavailability in African children  
1935 receiving artemether-lumefantrine crushed or dispersible tablets (Coartem) for acute uncomplicated  
1936 *Plasmodium falciparum* malaria. *Trop Med Int Health* 2010; 15(4): 434-41.

1937 179. Ginsburg CM et al. Effect of feeding on bioavailability of griseofulvin in children. *J Pediatr* 1983;  
1938 102(2): 309-11.

1939 180. De Guchtenaere A et al. Pharmacokinetic data on oral desmopressin reducing dosage by changing to a  
1940 new oral lyophilisate (melt) formulation. *J Urol* 2012; 187(4) Suppl: e301.

1941 181. Lonnerholm G et al. Oral mercaptopurine in childhood leukemia: influence of food intake on  
1942 bioavailability. *Pediatr Hematol Oncol* 1989; 6(2): 105-12.

1943 182. McCracken GH, Jr. et al. Pharmacologic evaluation of orally administered antibiotics in infants and  
1944 children: effect of feeding on bioavailability. *Pediatrics* 1978; 62(5): 738-43.

1945 183. Riccardi R et al. Influence of food intake on bioavailability of oral 6-mercaptopurine in children with  
1946 acute lymphoblastic leukemia. *Pediatr Hematol Oncol* 1986; 3(4): 319-24.

1947 184. Sofianou-Katsoulis A et al. Reduction in bioavailability of 6-mercaptopurine on simultaneous  
1948 administration with cow's milk. *Pediatr Hematol Oncol* 2006; 23(6): 485-7.

1949 185. Stevens RC et al. Effect of food and pharmacokinetic variability on didanosine systemic exposure in  
1950 HIV-infected children. Pediatric AIDS Clinical Trials Group Protocol 144 Study Team. *AIDS Res*  
1951 *Hum Retroviruses* 2000; 16(5): 415-21.

1952 186. De Bruyne P et al. Pharmacokinetics of desmopressin administered as tablet and oral lyophilisate  
1953 formulation in children with monosymptomatic nocturnal enuresis. *Eur J Pediatr* 2014; 173(2): 223-8.

1954 187. Ginsburg CM et al. Comparative Pharmacokinetics of Amoxicillin and Ampicillin in Infants and  
1955 Children. *Pediatrics* 1979; 64(5): 627-31.

1956 188. Fleisher D et al. Drug, meal and formulation interactions influencing drug absorption after oral  
1957 administration. Clinical implications. *Clin Pharmacokinet* 1999; 36(3): 233-54.

1958 189. Jann MW et al. Interaction of dietary pudding with phenytoin. *Pediatrics* 1986; 78(5): 952-3.

1959 190. Notterman DA et al. Effect of dose formulation on isoniazid absorption in two young children. *Pediatrics*  
1960 1986; 77(6): 850-2.

1961 191. Tuleu C, Breitzkreutz J. Educational paper: formulation-related issues in pediatric clinical pharmacology.  
1962 *Eur J Pediatr* 2013; 172(6): 717-20.

1963 192. Knorr B et al. Pharmacokinetics and safety of montelukast in children aged 3 to 6 months. *J Clin*  
1964 *Pharmacol* 2006; 46(6): 620-7.

1965 193. Andersson T et al. Pharmacokinetics of orally administered omeprazole in children. International  
1966 Pediatric Omeprazole Pharmacokinetic Group. *Am J Gastroenterol* 2000; 95(11): 3101-6.

1967 194. Turner MA et al. Paediatric drug development: the impact of evolving regulations. *Adv Drug Deliv Rev*  
1968 2014; 73(2-13).

1969 195. Dresser GK et al. Fruit juices inhibit organic anion transporting polypeptide-mediated drug uptake to  
1970 decrease the oral availability of fexofenadine. *Clin Pharmacol Ther* 2002; 71(1): 11-20.

1971 196. Batchelor HK et al. Food effects in paediatric medicines development for products Co-administered with  
1972 food. *Int J Pharm* 2017; 536(2): 530-5.

1973 197. Strickley RG et al. Pediatric drugs-a review of commercially available oral formulations. *J Pharm Sci*  
1974 2008; 97(5): 1731-74.

1975 198. European Commission. Medicinal Products for Paediatric use. *Regulation (EC) No 1901/2006*. Official  
1976 Journal of the European Union, 2006.

1977 199. Toothaker RD, Welling PG. The effect of food on drug bioavailability. *Annu Rev Pharmacol Toxicol*  
1978 1980; 20: 173-99.

1979 200. Kakuda TN et al. Pharmacokinetics of darunavir after administration of an oral suspension with low-dose  
1980 ritonavir and with or without food. *Clin Pharmacol Drug Dev* 2014; 3(5): 346-52.

1981 201. Salem AH et al. A novel ritonavir paediatric powder formulation is bioequivalent to ritonavir oral  
1982 solution with a similar food effect. *Antivir Ther* 2015; 20(4): 425-32.

1983 202. Stampfuss J et al. The effect of food on the absorption and pharmacokinetics of rivaroxaban. *Int J Clin*  
1984 *Pharmacol Ther* 2013; 51(7): 549-61.

1985 203. Brouwers J et al. Parallel monitoring of plasma and intraluminal drug concentrations in man after oral  
1986 administration of fosamprenavir in the fasted and fed state. *Pharm Res* 2007; 24(10): 1862-9.

1987 204. Dohil R, Rioux P. Pharmacokinetic Studies of Cysteamine Bitartrate Delayed-Release. *Clin Pharmacol*  
1988 *Drug Dev* 2013; 2(2): 178-85.

1989 205. Mclean A et al. The influence of food on the bioavailability of a twice-daily controlled release  
1990 carbamazepine formulation. *J Clin Pharmacol* 2001; 41(2): 183-6.

1991 206. Cassilly D et al. Gastric emptying of a non-digestible solid: assessment with simultaneous SmartPill pH  
1992 and pressure capsule, antroduodenal manometry, gastric emptying scintigraphy. *Neurogastroenterol*  
1993 *Motil* 2008; 20(4): 311-9.

1994 207. Karim A. Karim A. Effects of food on the bioavailability of theophylline from controlled-release  
1995 products in adults. *J Allergy Clin Immunol* 1986; 78(4 Pt 2): 695-703.

1996 208. Sips AP et al. Food does not effect in bioavailability of theophylline from Theolin Retard. *Eur J Clin*  
1997 *Pharmacol* 1984; 26(3): 405-7.

1998 209. Pedersen S. Effects of food on the absorption of theophylline in children. *J Allergy Clin Immunol* 1986;  
1999 78(4 Pt 2): 704-9.

2000 210. Chew ML et al. Pharmacokinetics of pregabalin controlled-release in healthy volunteers: effect of food in  
2001 five single-dose, randomized, clinical pharmacology studies. *Clin Drug Investig* 2014; 34(9): 617-26.

2002 211. Karkossa F et al. Simulating Different Dosing Scenarios for a Child-Appropriate Valproate ER  
2003 Formulation in a New Pediatric Two-Stage Dissolution Model. *AAPS PharmSciTech* 2017; 18(2):  
2004 309-316.

2005 212. Fotaki N, Brassine C. Age related biorelevant dissolution testing for pediatric pellet formulations *APPS*  
2006 *Published abstracts*. Available from <http://abstracts.aaps.org/published/>, AAPS annual meeting, San  
2007 Antonio, 2013

2008 213. Mencarelli G et al. Age related biorelevant dissolution testing for paediatric formulations *Int J Pharm*  
2009 2018; 536: 490-522.

2010 214. Havenaar R et al. In vitro gastrointestinal model (TIM) with predictive power, even for infants and  
2011 children? *Int J Pharm* 2013; 457(1): 327-32.

2012 215. Klitgaard M et al. Studying furosemide solubilization using an in vitro model simulating gastrointestinal  
2013 digestion and drug solubilization in neonates and young infants. *Eur J Pharm Sci.*2017; 109: 191-99.

2014 216. European Medicines Agency (EMA). Draft reflection paper on the use of extrapolation in the  
2015 development of medicines for paediatrics. *EMA/199678/2016*, 2017.

2016 217. Food and Drug Administration (FDA). Leveraging Existing Clinical Data for Extrapolation to Pediatric  
2017 Uses of Medical Devices: Guidance for Industry and Food and Drug Administration Staff. 2016

2018 218. Dunne J et al. Extrapolation of adult data and other data in pediatric drug-development programs.  
2019 *Pediatrics* 2011; 128(5): e1242-9.

2020 219. Sharma V, Mcneill J. To scale or not to scale: the principles of dose extrapolation. *Br J Pharmacol* 2009;  
2021 157(6): 907-21.

2022 220. Samant TS et al. Quantitative clinical pharmacology for size and age scaling in pediatric drug  
2023 development: A systematic review. *J Clin Pharmacol* 2015; 55(11): 1207-17.

2024 221. Mahmood I et al. Prediction of Clearance in Neonates and Infants ( $\leq 3$  Months of Age) for Drugs That  
2025 Are Glucuronidated: A Comparative Study Between Allometric Scaling and Physiologically Based  
2026 Pharmacokinetic Modeling. *J Clin Pharmacol* 2017; 57(4): 476-83.

2027 222. Bjorkman S. Prediction of cytochrome p450-mediated hepatic drug clearance in neonates, infants and  
2028 children : how accurate are available scaling methods? *Clin Pharmacokinet* 2006; 45(1): 1-11.

2029 223. Calvier EA et al. Allometric Scaling of Clearance in Paediatric Patients: When Does the Magic of 0.75  
2030 Fade? *Clin Pharmacokinet* 2017; 56(3): 273-85.

2031 224. Edginton AN et al. A mechanistic approach for the scaling of clearance in children. *Clin Pharmacokinet*  
2032 2006; 45(7): 683-704.

2033 225. Jones H et al. A novel strategy for physiologically based predictions of human pharmacokinetics. *Clin*  
2034 *Pharmacok* 2006; 45(5): 511-42.

2035 226. Zhuang X, Lu C. PBPK modeling and simulation in drug research and development. *Acta Pharmaceutica*  
2036 *Sinica B* 2016; 6(5): 430-40.

2037 227. Kostewicz ES et al. PBPK models for the prediction of in vivo performance of oral dosage forms. *Eur J*  
2038 *Pharm Sci* 2014; 57: 300-21.

2039 228. Food and Drug Administration (FDA). Physiologically Based Pharmacokinetic Analyses — Format and  
2040 Content Guidance for Industry (draft guidance). 2016.

2041 229. European Medicines Agency (EMA). Guideline on the qualification and reporting of 4 physiologically  
2042 based pharmacokinetic (PBPK) modelling 5 and simulation. *EMA/CHMP/458101/2016*, 2016.

2043 230. Upton RN et al. An introduction to physiologically-based pharmacokinetic models. *Paediatr Anaesth*  
2044 2016; 26(11): 1036-46.

2045 231. Tsamandouras N et al. Combining the ‘bottom up’ and ‘top down’ approaches in pharmacokinetic  
2046 modelling: fitting PBPK models to observed clinical data. *Br J Clin Pharmacol* 2015; 79(1): 48-55.

2047 232. Simulations Plus Inc., 2017. <https://www.simulations-plus.com/>.

2048 233. Certara USA I 2011-2018. <https://www.certara.com/>.

2049 234. Bouzom F et al. Physiologically based pharmacokinetic (PBPK) modelling tools: how to fit with our  
2050 needs? *Biopharm Drug Dispos* 2012; 33(2): 55-71.

235. Jamei M. Recent advances in development and application of physiologically-based pharmacokinetic (PBPK) models: a transition from academic curiosity to regulatory acceptance. *Pharmacol Rep* 2016; 2(3): 161-69.
236. Villiger A et al. Using Physiologically Based Pharmacokinetic (PBPK) Modelling to Gain Insights into the Effect of Physiological Factors on Oral Absorption in Paediatric Populations. *AAPS J* 2016;18(4): 933-47.
237. Maharaj AR et al. A Workflow Example of PBPK Modeling to Support Pediatric Research and Development: Case Study with Lorazepam. *AAPS J* 2013; 15(2): 455-64.
238. Khalil F, Läer S. Physiologically Based Pharmacokinetic Models in the Prediction of Oral Drug Exposure Over the Entire Pediatric Age Range—Sotalol as a Model Drug. *AAPS J* 2014; 16(2): 226-39.
239. Lukacova V et al. A Physiologically Based Pharmacokinetic Model for Ganciclovir and Its Prodrug Valganciclovir in Adults and Children. *AAPS J* 2016; 18(6): 1453-63.
240. Kuepfer L et al. Applied Concepts in PBPK Modeling: How to Build a PBPK/PD Model. *CPT Pharmacometrics Syst Pharmacol* 2016; 5(10): 516-31.
241. Simulations Plus Inc. Gastroplus PBPK Modeling Software... from Discovery through Development. 2016: 1–16, <http://www.simulations-plus.com/assets/GastroPlus-Brochure-Nov2016.pdf>.
242. Simulations Plus Inc. Pediatric PBPK Modeling - Special Considerations in GastroPlus. In: Lukacova, V. ed., 2015: 1–16, <https://www.simulations-plus.com/resource-center/?resource-category=videos>.
243. Kohlmann P et al. Investigating Oral Absorption of Carbamazepine in Pediatric Populations. *AAPS J* 2017; 19(6): 1864-77.
244. Edginton AN, Ritter L. Predicting Plasma Concentrations of Bisphenol A in Children Younger Than 2 Years of Age after Typical Feeding Schedules, using a Physiologically Based Toxicokinetic Model. *Environ Health Perspect* 2009; 117(4): 645-52.
245. Jones HM et al. Physiologically based pharmacokinetic modeling in drug discovery and development: a pharmaceutical industry perspective. *Clin Pharmacol Ther* 2015; 97(3): 247-62.
246. Rasool MF et al. A Physiologically Based Pharmacokinetic Drug–Disease Model to Predict Carvedilol Exposure in Adult and Paediatric Heart Failure Patients by Incorporating Pathophysiological Changes in Hepatic and Renal Blood Flows. *Clin Pharmacokinet* 2015; 54(9): 943-62.

2086 **List of Tables**

2087

2088 **Table 1** Age groups classification according to ICH [10; 11], FDA and WHO [5; 6]. (d - days; mo - months; yr

2089 - years).

2090

Age Groups	ICH	FDA	WHO	Body weight (kg)		Body Surface Area (m <sup>2</sup> )	
				male	female	male	female
Newborn	0 – 27 d <sup>(a)</sup>	0 – 1 mo	0 - 30 d	birth			
				3.4	3.2	0.22	0.21
Infants	28 d – 23 mo <sup>(b)</sup>	1 mo – 2 yr	1 mo – 2 yr	1 mo			
				4.5	4.1	0.38	0.37
				6 mo			
				7.9	7.3	0.45	0.43
				1 yr			
Children	2 – 5 yr <sup>(c)</sup>	2 – 12 yr	2 – 6 yr <sup>(d)</sup>	9.6	8.9	0.56	0.53
				2 yr			
				13	12	0.68	0.67
				4 yr			
				16.1	15.9	0.82	0.8
	6 - 11 yr <sup>(e)</sup>	2 – 12 yr	6– 12 yr <sup>(f)</sup>	6 yr			
				20.9	20	0.95	0.95
				8 yr			
				25.5	25.5	1.11	1.12
				10 yr			
Adolescents	12-16 or 18 yr <sup>(g)</sup>	12 – 16 yr	12 – 18 yr	32	33	1.11	1.12
				12 yr			
				40.5	41.9	1.29	1.33
				14 yr			
				51	49.5	1.52	1.49
				16 yr			
				61	54	1.72	1.56
Adults	>16-18 yr	>16 yr	>18 yr	18 yr			
				67	56	1.81	1.59
				20 yr			
				85.9	72.1	2.05	1.8

2091

2092 <sup>(a)</sup> Usually known in literature as neonates

2093 <sup>(b)</sup> Infants and toddlers

2094 <sup>(c)</sup> Pre-school child

2095 <sup>(d)</sup> Young child

2096 <sup>(e)</sup> School child

2097 <sup>(f)</sup> Child

2098 <sup>(g)</sup> Depending on region

2099 **Table 2** Characteristics of usual meals in paediatric subpopulations and adults. (d - days; mo - months; yr - years)

Type of food	Age	Total caloric content			Caloric density [kcal/g]	Caloric content/recommended portion [kcal]	Portion size
		Fats [%]	Carbohydrates [%]	Proteins [%]			
<b>Human breast milk (colostrum) [12; 44]</b>	1-3 d	30	42	15	0.5-0.6	30-35	60 mL
<b>Human breast milk (mature milk) [12; 44; 50]</b>	>15 d	46-54	41-46	7	0.6-0.7	54-126	90-180 mL
<b>Infant formulae [51]</b>	>1 d	40-55	36-54	7-10	0.6-0.7	-42-140	70-230 mL
<b>Follow-on formulae [51]</b>	>6 mo	35-55	36-54	7-14	0.6-0.7	160-170	230-240 mL
<b>Fortified milk 1+ [51]</b>	>12 mo	37-45	39-52	12-16	0.6-0.7	150-160	240 mL
<b>Whole cow's milk</b>	>36 mo	47-53	27-30	21	0.6-0.7	165	250 mL
<b>Fruit puree<sup>a</sup></b>	5 mo	2-9	87-96	2-6	0.5-0.6	50-125	100-190 g
<b>Fruit with cereal<sup>a</sup></b>	6 mo	2-7	88-91	3-8	0.6-0.9	120-160	190 g
<b>Porridge and Creams<sup>a</sup></b>	8 mo	25-35	55-62	10-14	1.0-1.3	200-240	180-210 g
<b>Infant Meal<sup>a</sup></b>	5 mo	26-45	44-55	12-20	0.6-0.9	110-170	190 g
	12 mo	27-39	44-60	12-19	0.7-0.8	170-200	250 g
<b>Recommended meal [28]</b>	>12 mo	30-40	45-65	5-20	1.0-1.1 <sup>b</sup>	230-380 <sup>b</sup>	220-370 g <sup>b</sup>
	>4 yr	25-35	45-65	10-30	0.6-1.8 <sup>c</sup>	150-350 <sup>c</sup>	150-350 g <sup>c</sup>
<b>Recommended meal [28]</b>	>19 yr	20-35	45-65	10-35	1.1-1.2 <sup>d</sup>	500-760 <sup>d</sup>	490-680 g <sup>d</sup>
<b>FDA/EMA standard breakfast<sup>e</sup> [52; 53]</b>	adults	50-60	25-30	15-20	1.5-1.8	800-1000	500 g

2100

2101 <sup>a</sup> On average basis; calculated from a search including commercially available infant meals, fruit purees and infant formula milk products

2102 <sup>b</sup> Portions of the recommended foods are adjusted to the suggestions for meal distribution as recommended in [16; 28]

2103 <sup>c</sup> Parameters were calculated from recommended family recipes, aimed at promoting healthy eating habits among children [54]

2104 <sup>d</sup> Parameters calculated from the proposed sample meal [28]

2105 <sup>e</sup> Suggested by the US FDA and EMA in the respective guidelines on investigation of food effect bioavailability and fed bioequivalence studies [52; 53]

2106

2107

2108 **Table 3** Fasted gastric volumes as a function of BW reported in the literature [N: sample size; SD: standard deviation; yr - years].

Age group of participants	N	Age [yr]		Weight [kg]		Volume [mL/kg]		Ref.
		Mean (SD)	Range	Mean (SD)	Weight	Mean (SD)	Range	
infants/children/adolescents	248	8.1 (5.7)	0.17-18	31.2 (32)	3.1-115	0.35 (0.45)	0-3.14	[67]
infants/children	20	3.3 (3.9)	0.5-5	14.3 (12.1)	-	0.40 (0.6)	-	[68]
infants/children/adolescents	25	6.2 (0.7)	0.5-12	24.6 (2.8)	6.8-58.1	0.49 (0.04)	0.21-1.15	[69]
infants/children/adolescents	35	4.5 (2.9)	1.2-12	17.5 (8.1)	9-43.5	0.36 (0.42)	0-1.64	[66]
infants/children/adolescents	55	6.6	1-14	26.1	10-77	0.25 (0.04)	-	[70]
infants/children/adolescents	100	-	1-14	-	-	0.56 (0.39)	0.1-2.5	[65]
infants/children/adolescents	19	5.2 (0.55)	1-14	21 (2.17)	-	0.25	0-1.1	[71]
infants/children	66	-	1-16	-	-	0.5 (0.4)	0-1.89	[72]
infants/children/adolescents	68	7.3 (4.6)	1-18	29 (17.7)	-	0.57 (0.51)	0-2.23	[73]
children/adolescents	64	5.7 (2.5)	2-12	26.1 (7.6)	5.7 (2.5)	0.39 (0.37)	0.04-1.97	[74]
children	40	7.4 (1.7)	5-10	26.1 (7.6)	-	0.43 (0.46)	0.01-1.65	[75]
children	31	7.4 (1.6)	5-10	26 (7)	7.4 (1.6)	0.45 (0.31)	0.02-1.15	[76]
adolescents	76	15 (2)	13-19	60 (16)	15 (2)	0.48 (0.40)	0.02-2.11	[77]
adults	50	38.8 (2)	18-64	68.5 (2.3)	45.5-110.0	0.37 (0.04)	0.05-1.33	[69]

2109

2110 **Table 4** Composition of adult reference biorelevant media and age-specific (grey) simulating fasted and fed state gastric and intestinal media  
2111 [109].

	Gastric Media						Intestinal Media						
	fasted state			fed state			fasted state			fed state			
Component	FaSSGF	Pn-FaSSGF	Pi-FaSSGF	FeSSGF	Pnc-FeSSGF	Pns-FeSSGF	FaSSIF-V2	P50%-FaSSIF	P150%-FaSSIF	FeSSIF-V2	Pnb-FeSSIF	Pnc-FeSSIF	Pi-FeSSIF
Sodium Taurocholate (mM)	0.08	0.02	0.060	-	-	-	3	1.5	4.5	10	2.5	2.5	7.5
Lecithin (mM)	0.02	0.005	0.015	-	-	-	0.2	0.1	0.3	2	0.5	0.5	1.5
Glyceryl Monooleate (mM)	-	-	-	-	-	-	-	-	-	5	5	6.65	5
Sodium Oleate (mM)	-	-	-	-	-	-	-	-	-	0.8	0.8	1.06	0.8
Pepsin (mg/mL)	0.1	0.015	0.025	-	-	-	-	-	-	-	-	-	-
Sodium Chloride (mM)	34.2	34.2	34.2	237.02	100.35	94.79	68.62	68.62	68.62	125.5	95	111.73	107.35
Acetic Acid (mM)	-	-	-	17.12	7.25	7.25	-	-	-	-	-	-	-
Sodium Acetate (mM)	-	-	-	29.75	64.65	64.65	-	-	-	-	-	-	-
Maleic Acid (mM)	-	-	-	-	-	-	19.12	19.12	19.12	55.02	55.02	55.02	55.02
Sodium Hydroxide (mM)	-	-	-	-	-	-	34.8	34.8	34.8	81.65	81.65	81.65	81.65
Milk:Buffer	-	-	-	1.1	1.1	1.1	-	-	-	-	-	-	-
HCl/NaOH qs	pH1.6	pH1.6	pH1.6	pH5	pH5.7	pH5.7	pH6.5	pH6.5	pH6.5	pH5.8	pH5.8	pH5.8	pH5.8
pH	1.6	1.6	1.6	5	5.7	5.7	6.5	6.5	6.5	5.8	5.8	5.8	5.8
Osmolality (mOsmol/Kg)	120.7	120.7	120.7	400	340	240	180	180	180	390	300	330	330
Buffer Capacity (mmol/L/ $\Delta$ pH)	-	-	-	25	15	15	10	10	10	25	25	25	25

2112  
2113 **FaSSGF** – Adult fasted-state gastric media;  
2114 **Pn-FaSSGF** – Paediatric fasted-state gastric media representative of newborns (0–28 days);  
2115 **Pi-FaSSGF** – Paediatric fasted-state gastric media representative of infants (1–12 months);  
2116 **FeSSGF** – Adult fed-state gastric media;

- 2117 **Pnc-FeSSGF** – Paediatric fed-state gastric media representative of newborns (0–28 days) fed cow’s milk-based formula;
- 2118 **Pns-FeSSGF** – Paediatric fed-state gastric media representative of newborns (0–28 days) fed soy-based formula.
- 2119 **FaSSIF-V2** – Adult fasted-state intestinal media;
- 2120 **P50%-FaSSIF** – Paediatric fasted-state intestinal media formulated with bile salt concentrations 50% (*i.e.* 1.5 mM) of adult levels;
- 2121 **P150%-FaSSIF** – Paediatric fasted-state intestinal media formulated with bile salt concentrations 150% (*i.e.* 4.5 mM) of adult levels;
- 2122 **FeSSIF-V2** – Adult fed-state intestinal media;
- 2123 **Pnb-FeSSIF** – Paediatric fed-state intestinal media representative of newborns (0–28 days) fed breast milk;
- 2124 **Pnc-FeSSIF** – Paediatric fed-state intestinal media representative of newborns (0–28 days) fed cow’s milk-based formula;
- 2125 **Pi-FeSSIF** – Paediatric fed-state intestinal media representative of infants.

2126 **Figure captions**

2127

2128 **Figure 1** Average amount of energy required for paediatric populations as recommended for different physical  
2129 activity levels by the EFSA (solid lines and filled symbols) and the U.S. Department of Health and Human  
2130 Services and U.S. Department of Agriculture (discontinued lines and open symbols). (A) daily average energy  
2131 requirement related to a sedentary lifestyle; (B) daily average energy requirement related to a moderate level of  
2132 activity; Recommendations for males (blue diamonds) and females (red circles). The retrieved data for newborns  
2133 and infants are independent of the physiological activity level. Data included in this figure were obtained from  
2134 [18; 26; 28; 29].

2135

2136 **Figure 2** Range of feeding volumes for formula-fed newborns and infants (A) and feeding intervals (B) for  
2137 newborns and infants, receiving either infant or follow-on formula (“formula”, open blocks), or being breastfed  
2138 (grey-filled blocks). The feeding intervals for breastfed and formula-fed infants are the same beyond the age of  
2139 two months (purple blocks) (mo: months; modified from DiMaggio and co-workers [12])

2140

2141 **Figure 3** European recommended ranges for total water intake in paediatrics. Values include intake of water,  
2142 beverages of all kind, and water from food moisture. Populations younger than 9 years: filled purple blocks;  
2143 males: blocks filled in grey; females: open blocks. Recommendations for adolescents >14 years of age are also  
2144 applicable for adults (d - days; mo - months; yr - years). Data used for this figure was retrieved from [36].

2145

2146 **Figure 4** Physicochemical properties of various soft foods and liquids administered in paediatric populations  
2147 and an adult meal used for food effect investigation of bioavailability and bioequivalence of drug products (FDA  
2148 standard breakfast): (A) pH-values; (B) Buffer capacity measured with 0.1 N sodium hydroxide solution; (C)  
2149 Osmolality; (D) Surface tension; (E) Viscosity; \* Soft foods/foods are non-Newtonian fluids. Modified from  
2150 [55; 56; 58; 59].

2151

2152 **Figure 5** Gastric (A) and intestinal (B) pH in fasted (open symbols) and fed state (closed symbols). Paediatric  
2153 and adult pH values were collected from literature and depicted as either mean (circles) or median (triangles)  
2154 values. In the fed state values depicted represent values measured after ingestion of different types of food.  
2155 When patients participating in the paediatric studies belonged to more than one age group, values were used as  
2156 mean age, or if a specific age range was reported without denoting the groups mean age, data was depicted using  
2157 the middle of the age range [65-67; 70-77; 87-105].

2158

2159 **Figure 6** Fed Gastric Emptying half-life for newborns and young infants (0-10 wk), children and adults: values  
2160 depict either mean (circle symbols) or median values (triangle symbols). Infant formula milk: yellow symbols;  
2161 breast milk: blue symbols; cow's milk: green symbols; solid food: red symbols. Data was collected from

different studies and milk products and solid food did not contain the same amount of calories and were administered in different volumes [49; 84; 124; 126; 130-133].

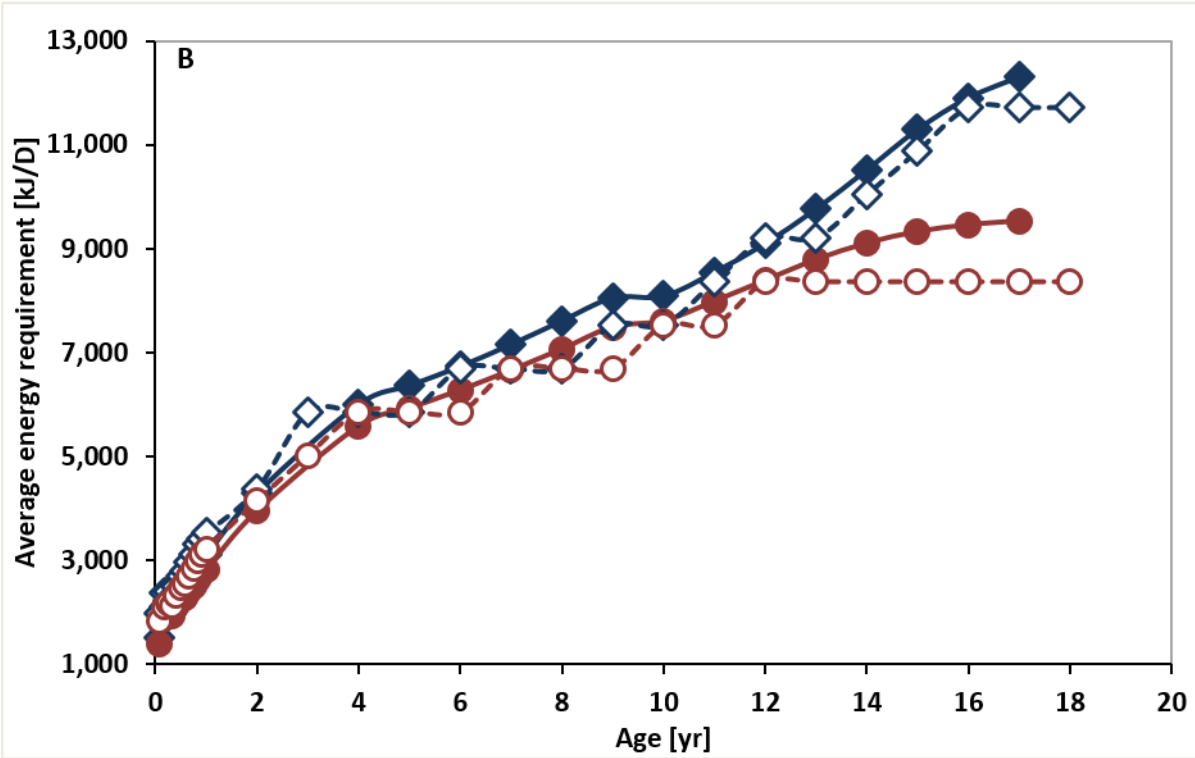
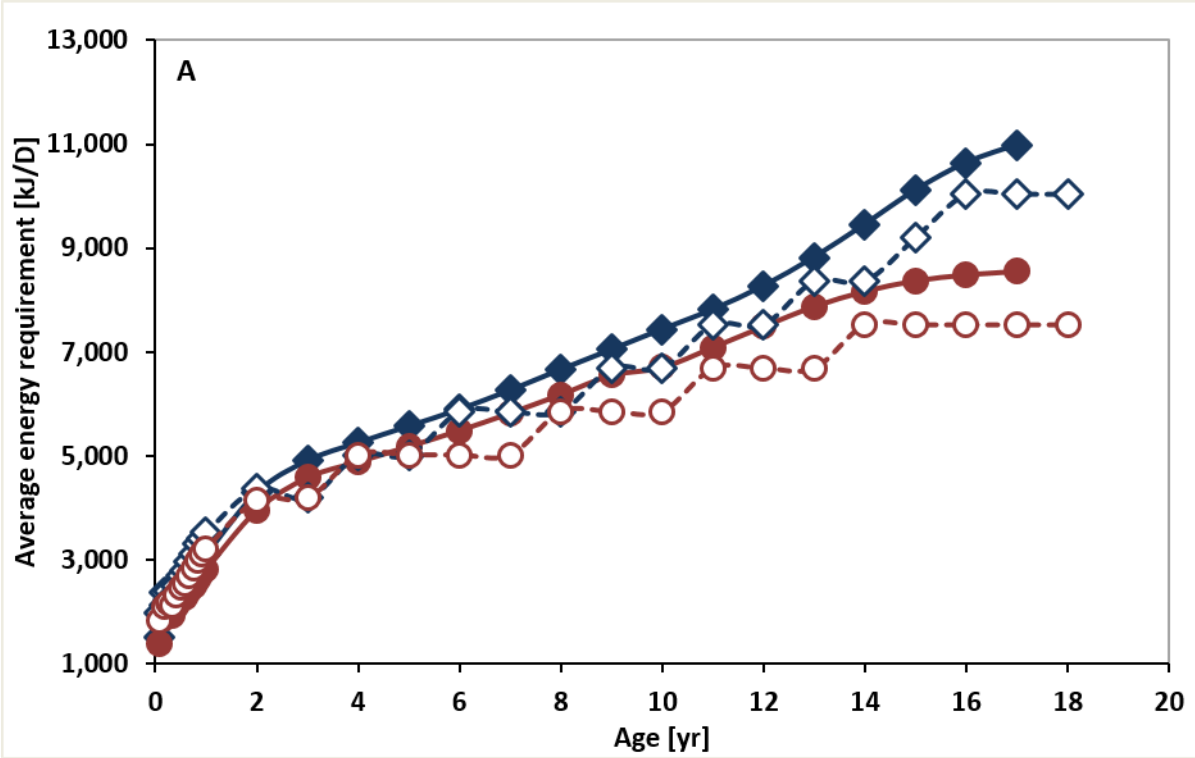
**Figure 7** Extrapolated initial gastric volumes during drug administration to paediatric populations based on 250 mL volume of water administered to adults with solid dosage forms. Extrapolation was based on BW: grey blocks [146; 147] and white blocks [163], or based on BSA-function: black blocks [164].

**Figure 8** Statistics of published PBPK models, search performed on PubMed (Status August 2017; n = 93). (A) Studied paediatric subpopulations; (B) Basic model used for paediatric PBPK model development; (C) Aim of PBPK modeling; (D) Software platforms utilised for paediatric PBPK model development. (DDI – drug-drug interactions).

**Figure 9** BCS class distribution amongst modeled drugs, identified in the PBPK search in PubMed. Only compounds, modeled for oral absorption are considered in this figure, n = 32. The numbers above each bar refer to the number of drugs studied according to their BCS classification. ND = Not defined.

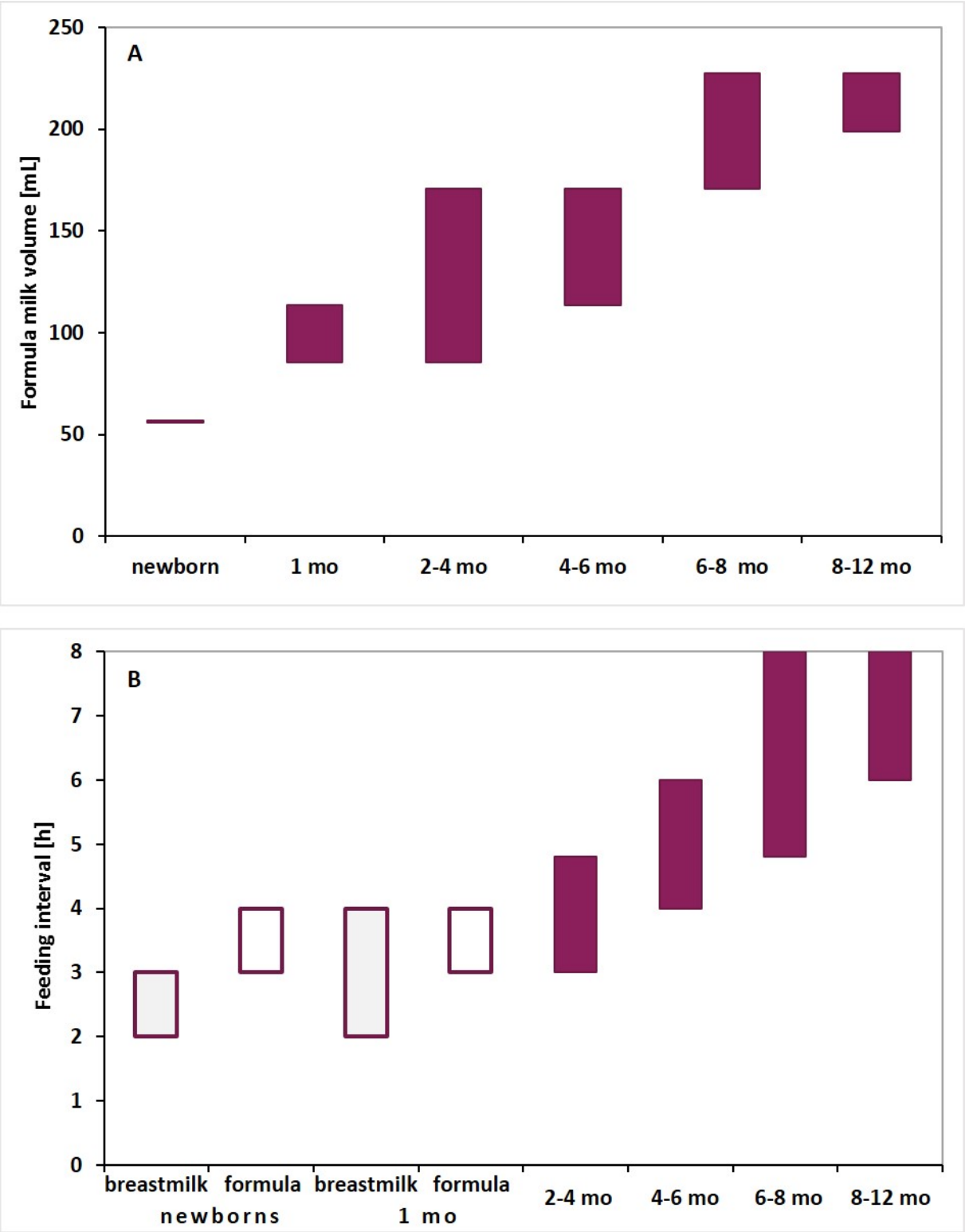
**Figure 10** Usual strategy for paediatric PBPK model development with a focus on oral drug absorption. **PSA:** parameter sensitivity analysis; bio-dependent drug properties: drug parameter values that depend on the drug and the adult/paediatric human physiology.

2182 **Figure 1**



2183

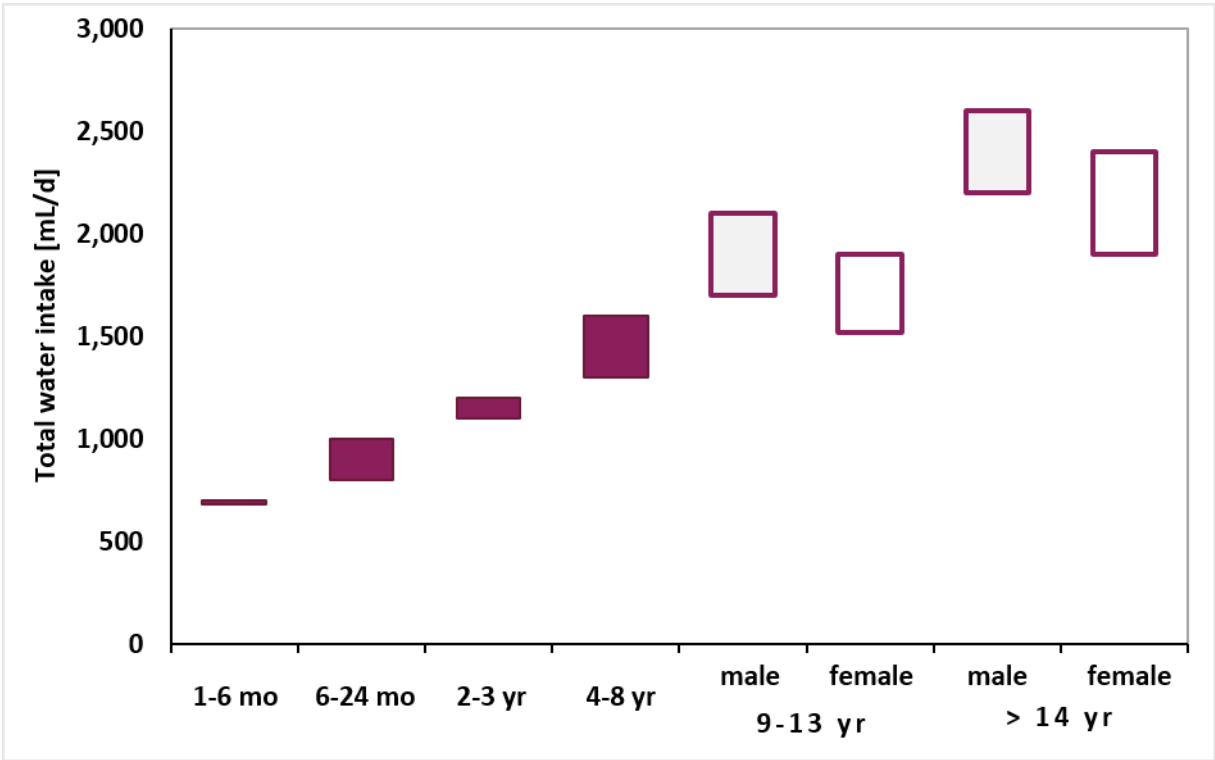
2184 **Figure 2**



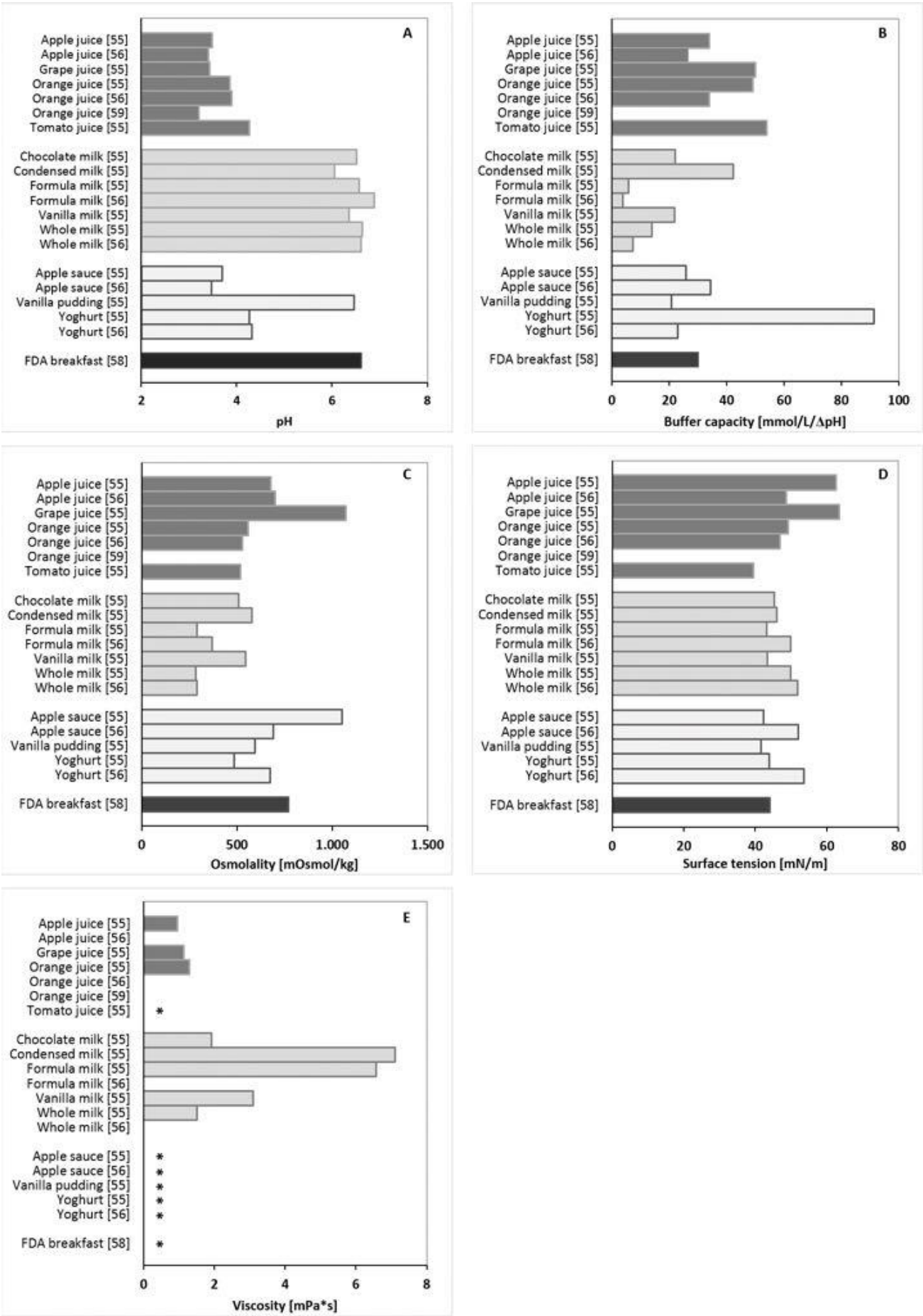
2185

2186

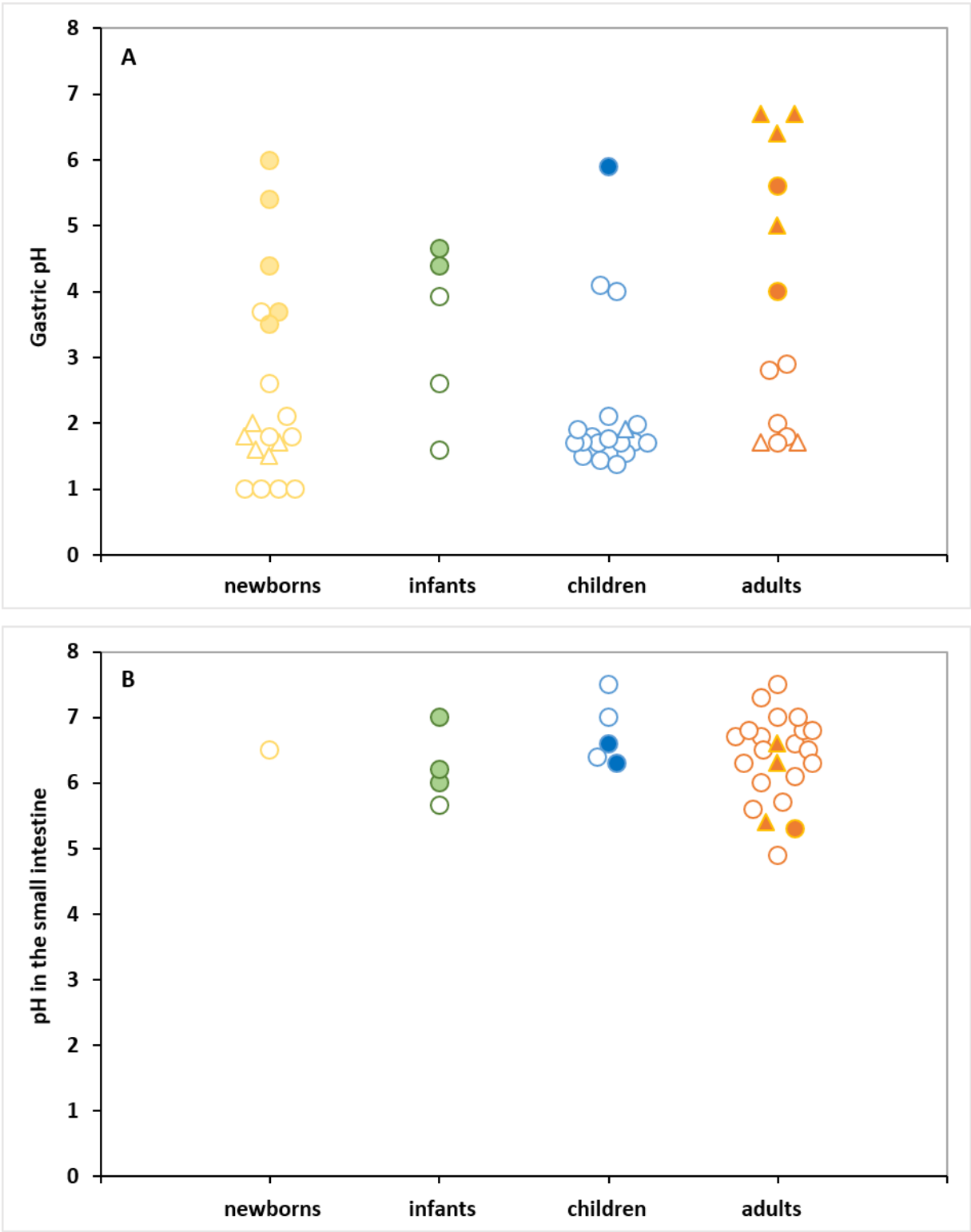
2187 **Figure 3**



2188  
2189

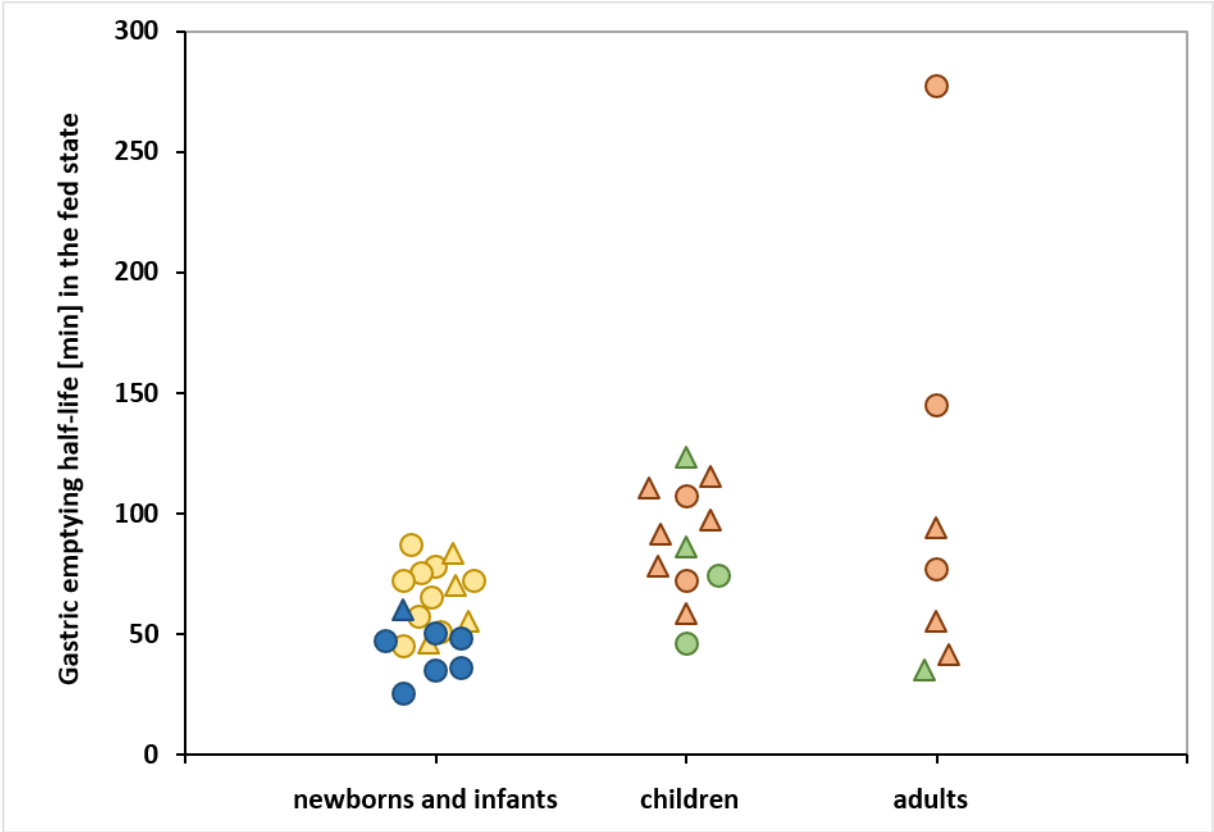


2191 **Figure 5**

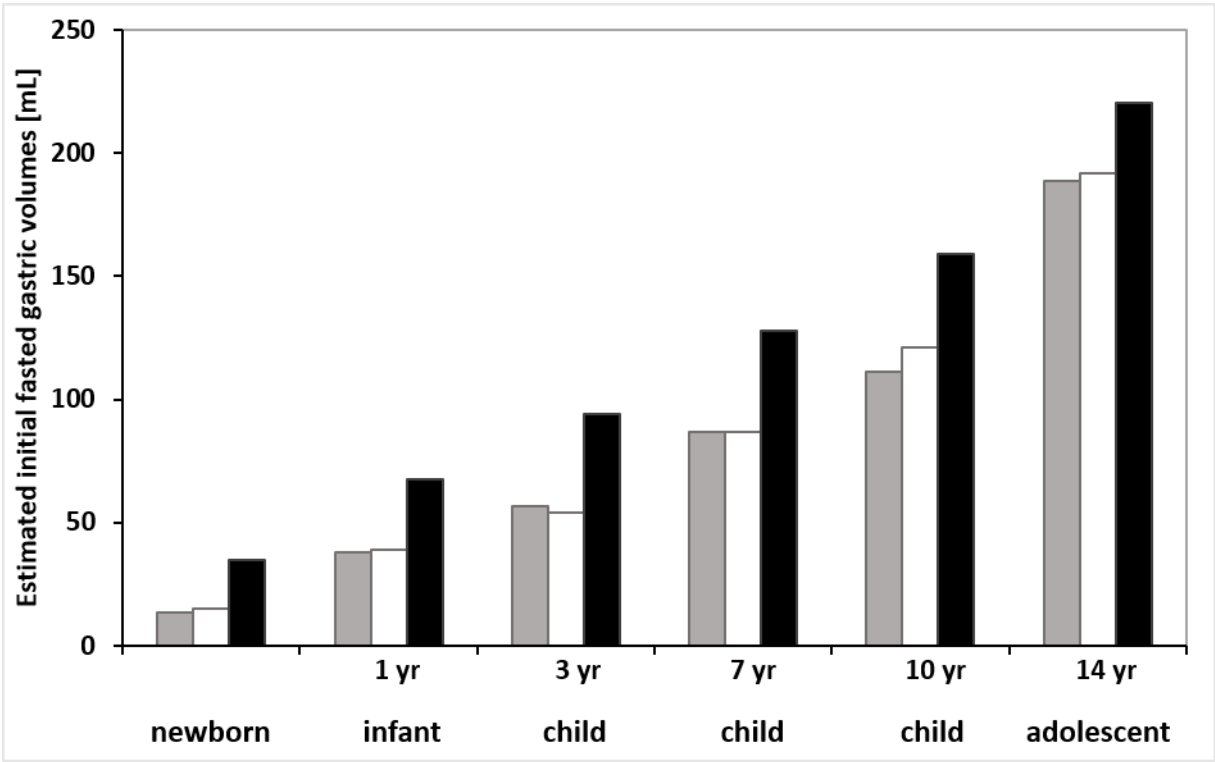


2192  
2193

2194 **Figure 6**

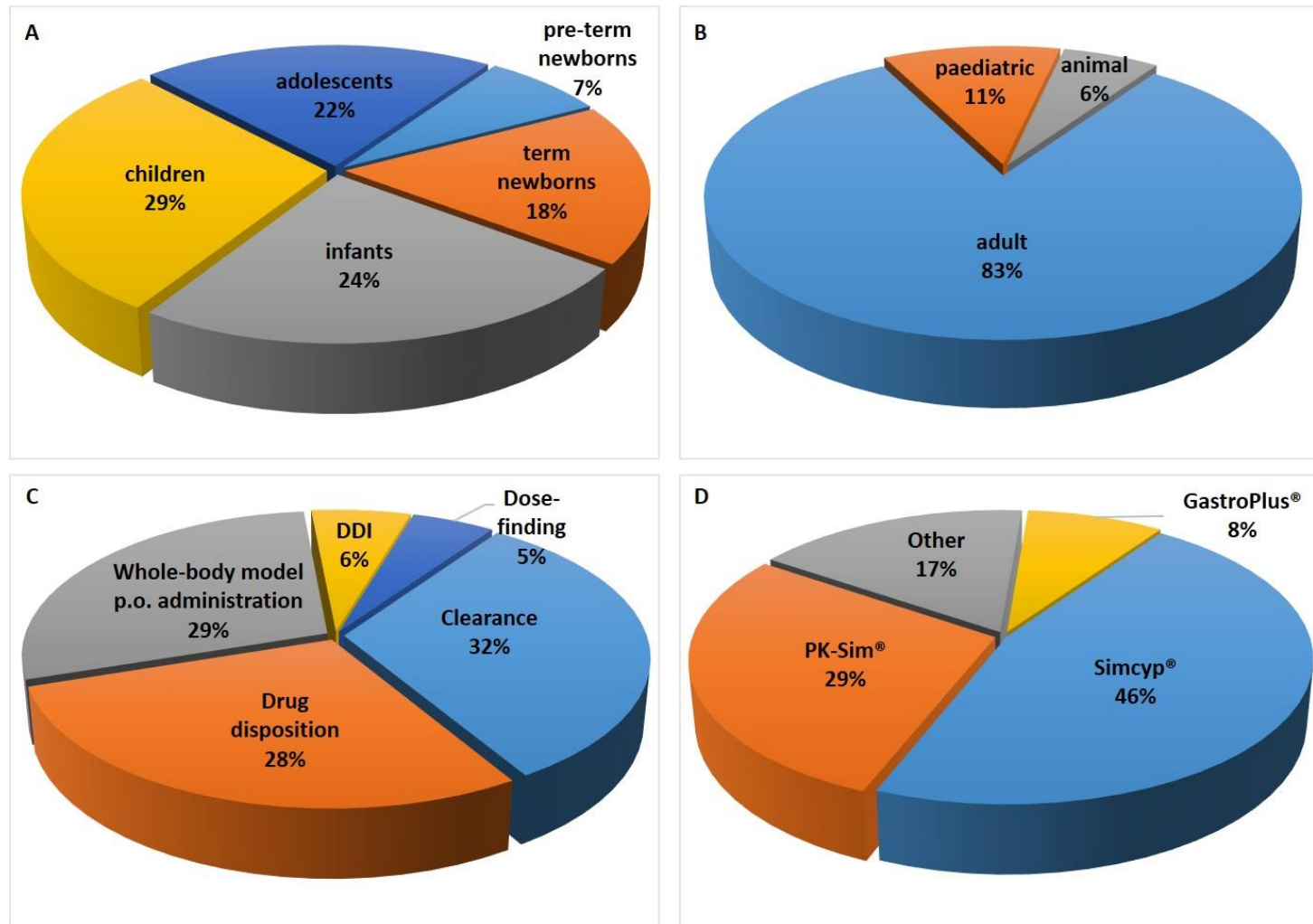


2197 **Figure 7**



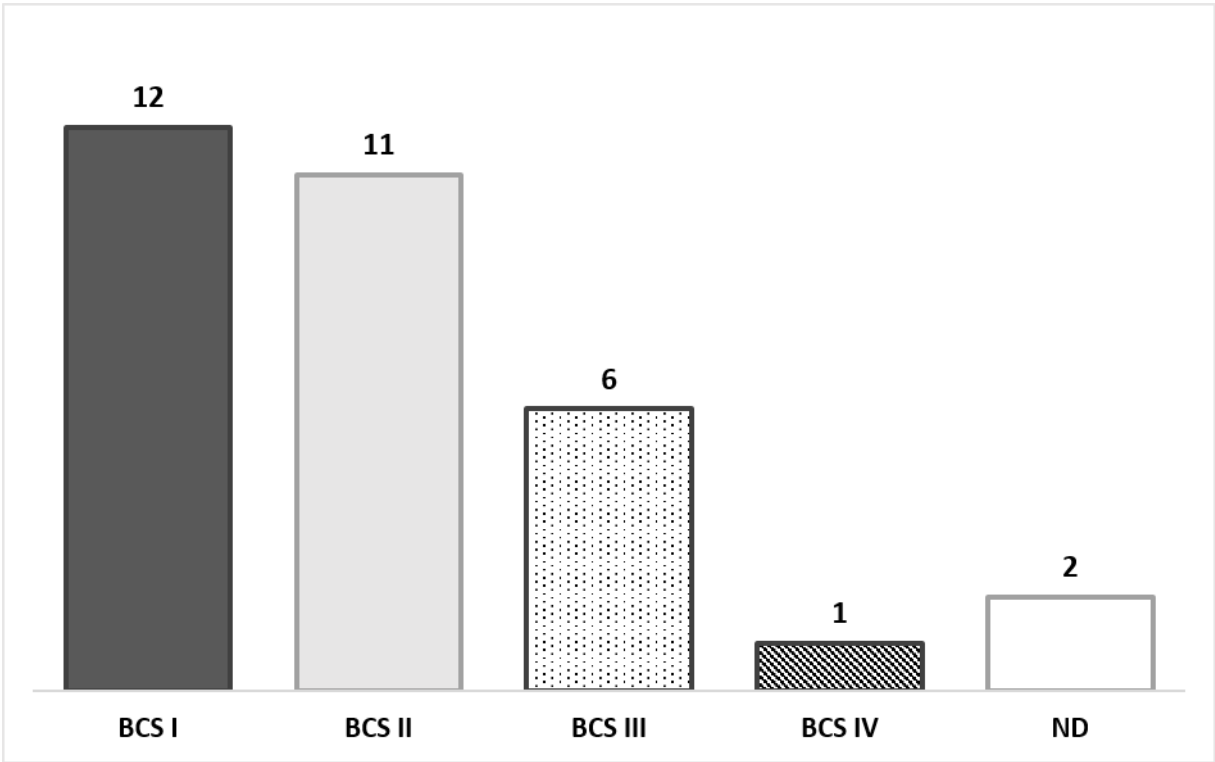
2198

2199 **Figure 8**



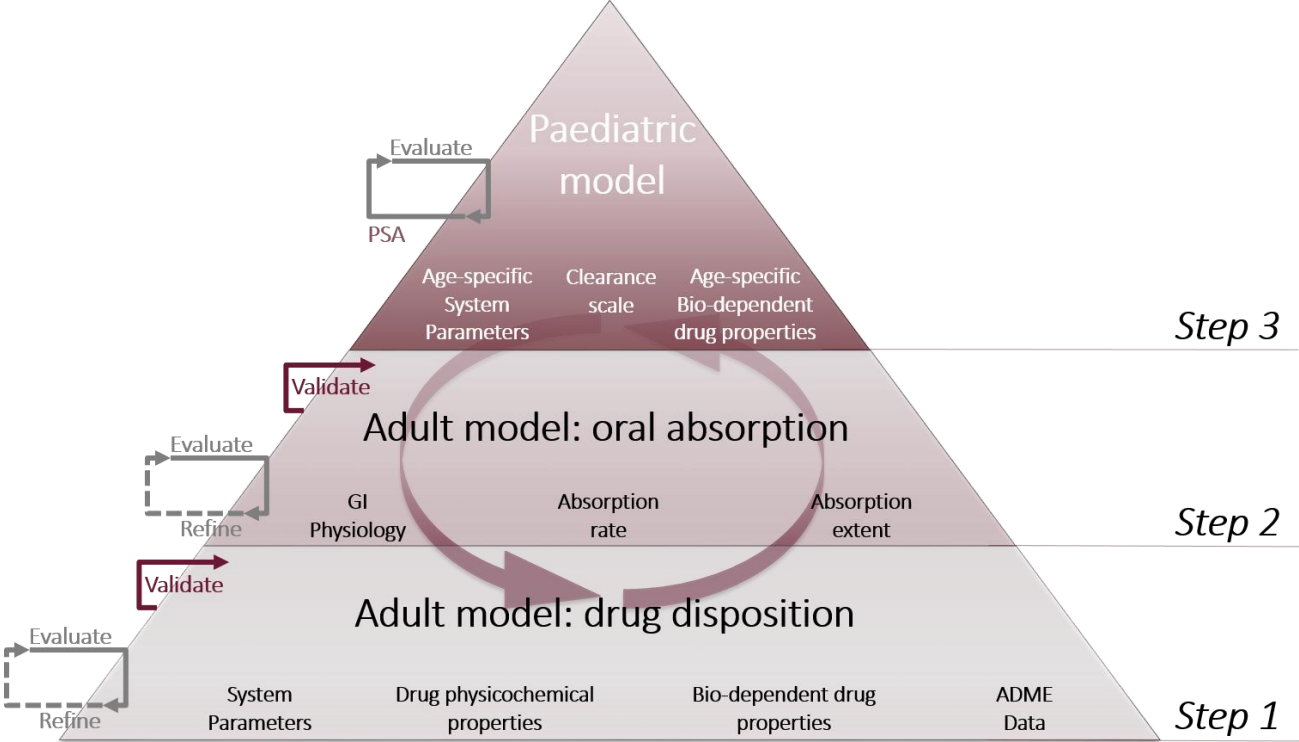
2200

2201 **Figure 9**

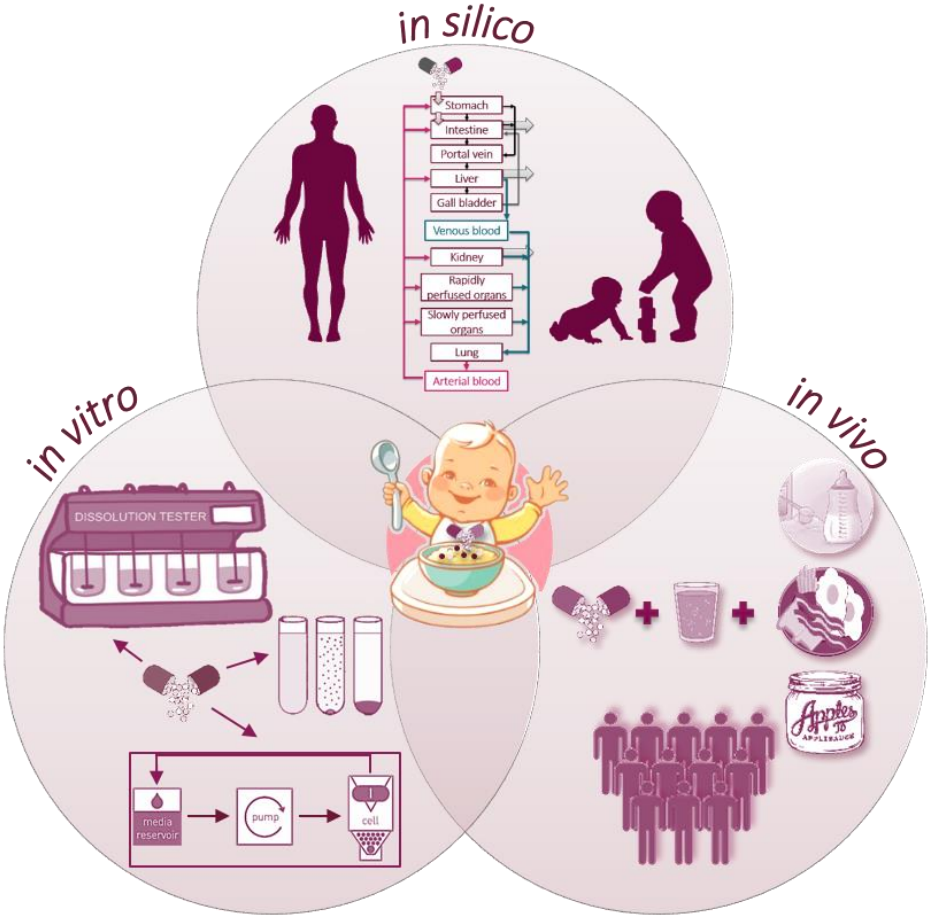


2202  
2203

2204 **Figure 10**



2205  
2206



2208

2209